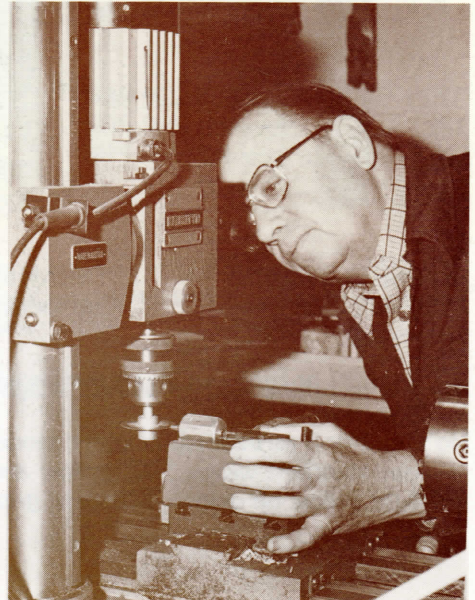
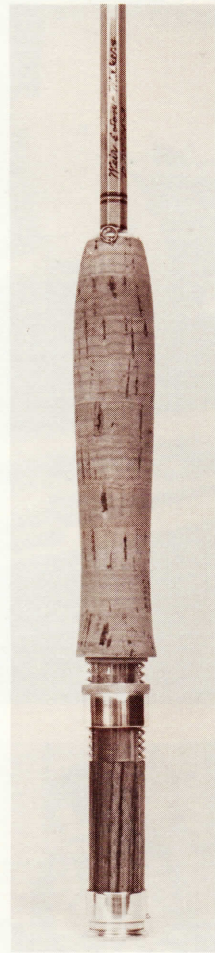
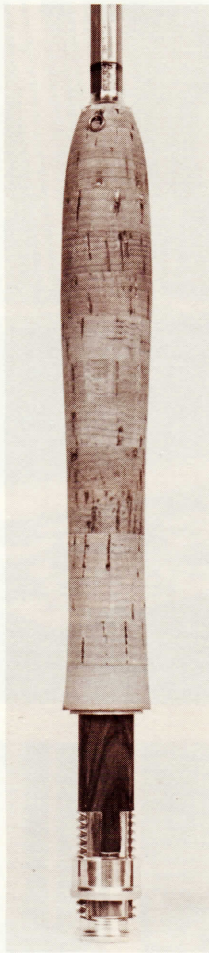
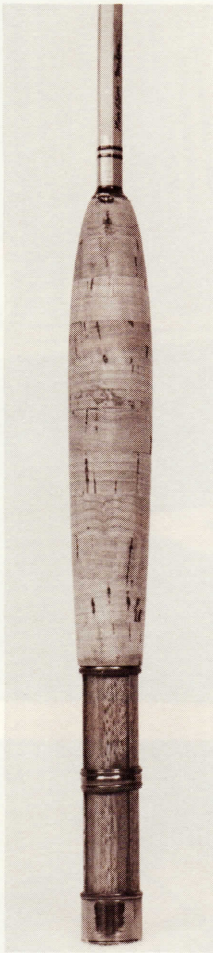


WEIR & SON

THREE GENERATIONS OF FINE BAMBOO RODS



Weir & Son proudly present our fine bamboo flyrods. The ultimate experience for the fly fisherman.



1. Hood and Ring all blued nickel silver fittings

2. Deluxe aluminum up locking reel seat

3. Standard aluminum reel seat, down locking

No. 1 is recommended for all light weight rods.

No's. 1, 2 or 3 as desired for other models
our standard wraps, "00" yellow and brown at ferrules and butt, transparent light yellow on guides. Standard grip 11 corks or 5 1/2 inches.

BAMBOO FLY RODS

These models represent the most asked for rods and tapers. If you wish something not listed, please inquire. Custom rod grips, wraps, pre-embargo cane and custom tapers are all available on special order.

Double taper lines are specified. Weight forward lines of the next size work equally well, for instance DT5F = WF6F.

Model number definition — first number equals feet, second number equals inches. Example M76 = Medium, 7 feet 6 inches.

Lightweight Rods (LW)

These rods are designed for the perfect presentation of dry flies and nymphs using light lines and 7X tippets, in low, clear water (late season angling).

LW 70	DT 3 LINE
LW 76	DT 4 LINE
LW 80	DT 5 LINE
LW 90	DT 6 LINE

Medium Action Rods (M)

A new concept in rod tapers. Depending on line selection these versatile medium action rods will handle dry flies, nymphs and streamers. A powerful, accurate rod for all situations.

M 76	DT 5 LINE
M 80	DT 6 LINE
M 86	DT 7 LINE

Dry Fly Rods (DF)

Our dry fly tapers have been developed and refined for over 50 years. These rods present a dry fly, on a long leader, deftly and accurately.

DF 66	DT 3 LINE
DF 70	DT 4 LINE
DF 76	DT 5 LINE
DF 80	DT 6 LINE
DF 86	DT 6 LINE

Special Rods

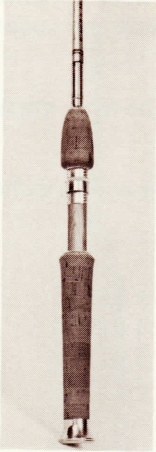
These rods are specially designed and hand planed to exacting tapers, for extreme accuracy and power. These rods are for the bass, steelhead and salmon fisherman.

SBS 90L (Light)	WF8F LINE
SBS 90H (Heavy)	ST11F LINE
SBS 96M (Medium)	ST10F LINE

All of our rods are varnished. We design and build all of our fittings, in addition to doing our precision cane work. We use black tungsten carbide guides and genuine agate stripping guides in nickle silver frames.

You are welcome to visit our shop. Please call first as we are hard to find.

BAMBOO BAIT CASTING RODS



Straight
Handle

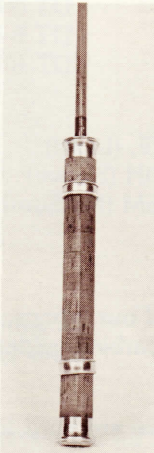


Pistol
Grip

BC 60UL (Ultra Light) 1/4 oz. lures
BC 60LW (Light Weight) 3/8 oz. lures
BC 60M (Medium) 5/8 oz. lures
BC 60HW (Heavy Weight) 1 oz. lures

Bait casting guides are ceramic.

BAMBOO SPINNING RODS



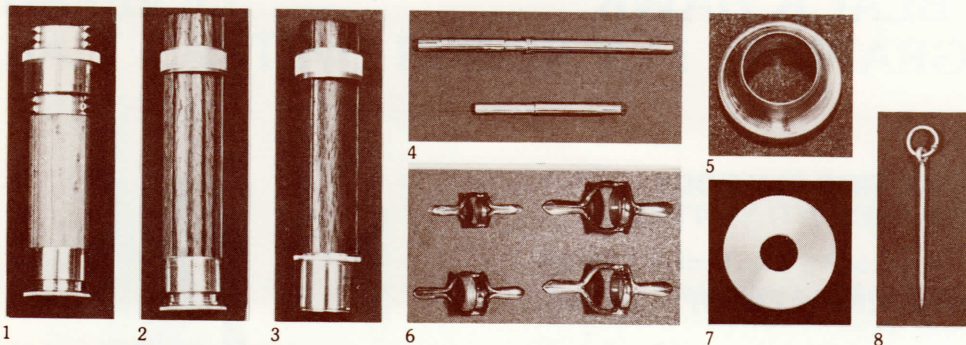
Cork handle
Sliding Rings

S (Spinning) S-50-UL 1/32 oz. lures
S-50-LW 1/16 oz. lures
S-60-LW 1/4 oz. lures
S-66-M 3/8 oz. lures
S-70-M 1/2 oz. lures
S-70-HW 5/8 oz. lures

We use high bridge light weight
guides on our spinning rods.

On our heavy weight (S-70-HW) spinning rod, the handle is fitted with a locking reel seat approximately in the center of the handle.

HARDWARE



HARDWARE PICTURED

1. Aluminum down locking with maple spacer*
2. Aluminum contour cap & ring with zebra wood spacer*
3. Aluminum hood & ring with mahogany spacer*
4. Classic nickle silver ferrules hand drawn and hand made. Sizes 15/64, 14/64, 13/64, 12/64, 11/64. (Set 2 males & 1 female)
5. Aluminum winding check*
6. Agate stripping guides, specify bright or blued. Sizes 5MM, 7MM or 8MM.
7. Rear aluminum cork guard*
8. Hook keeper, a sterling silver ring on a pin to be inserted diagonally in the grip.
9. Aluminum reel seat deluxe* (See No. 2 rod, page 1)

HARDWARE NOT PICTURED

10. Slotted Wood spacer.*
11. Tungsten carbide black stripping guide 8mm.
12. Set of black tungsten carbide snake guides, specify rod length, 2 or 3 piece.
13. "00" nylon thread 50 yards, all colors.
14. Rod bags, 2 piece 2 tip rods, specify length (special bags priced to order).
15. Aluminum Champion rod case, 1-5/8 inches diameter, up to 49 inches in length.
16. 2 ounces tung oil base varnish
17. 1 ounce preserver.
18. Tiptop tungsten carbide — sizes 4½, 5, 5 ½, 6, 6 ½.
19. Cork Rings*

*Specify bore size when ordering, standard bore 3/8 D.

Wood spacers — choose from Rosewood/satinwood/maple/walnut/cherry, nara/teak/zebra/ebony/mahogany/cocobola

BAMBOO ROD BLANKS

We are only offering the most popular and versatile actions and lengths.

- | | |
|---------------------------|------------|
| 7-1/2 foot dry fly action | DT5F, WF6F |
| 8 foot dry fly action | DT6F, WF7F |
| 7-1/2 foot medium action | DT5F, WF6F |
| 8 foot medium action | DT6F, WF7F |

All blanks are heat treated to a rich brown and are ferruled with our nickle silver ferrules.

BAMBOO ROD REPAIR

1. TWO-PIECE FLYROD (3 SECTIONS) RESTORED TO NEW CONDITION, includes the following: (a) new guides and tip tops, (b) new windings to match original, (c) tighten all ferrules, (d) straighten cane if required, (e) buff hardware, (f) varnish, using tung oil varnish, (g) clean cork handle.
2. THREE-PIECE FLYROD (4 SECTIONS) RESTORED TO NEW CONDITION, includes the following: (a) new guides and tip tops (if antique ring guides, we clean and will replace only if necessary), (b) new windings to match original (if rod has intermediate winding between guides. See price sheet 2A). (c) tighten all ferrules, (d) straighten cane if required, (e) buff hardware (if original blued hardware needs rebluing. See price sheet 2B, (f) varnish, using our tung oil varnish, (g) clean cork handle.
3. REPLACE FERRULES — 2-piece rod (3 sections)
4. REPLACE FERRULES — 3-piece rod (4 sections)
5. STRAIGHTEN ANY ONE SECTION
6. REPLACE YOUR TIP
7. DUPLICATE YOUR REEL SEAT (we will quote price upon receipt of your rod.)
8. REPLACE YOUR REEL SEAT with our hand fitted, reel seat. (We will quote price on request.)
9. REWIND AND REPLACE GUIDES AND TIP TOP ON ANY TIP AND VARNISH (if tip has intermediate windings. See price sheet 9A.)
10. REWIND, REPLACE GUIDES AND VARNISH BUTT SECTION (if butt has intermediate windings. See price sheet 10A.)
11. REWIND AND REPLACE SINGLE GUIDE AND VARNISH (match your windings.)
12. REPLACE CORK GRIP (match your grip.)
13. REWRAP RATTAN GRIP AND FINISH STAIN TO MATCH YOURS.
14. BLUE YOUR FERRULES (nickel silver only).
15. BLUE YOUR REEL SEAT (nickel silver only).
16. REPLACE YOUR HOOK KEEPER with our special keeper installed on handle.
17. DUPLICATE YOUR FERRULE SET (nickel silver only).

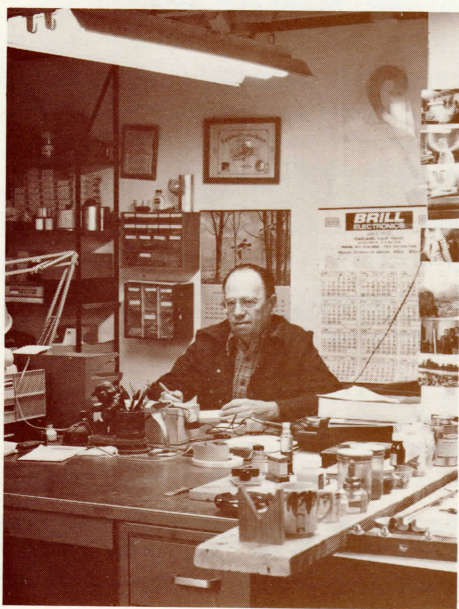
SPECIAL NOTE:

1. **Weir & Son** has the capability to repair any and all Bamboo Rods and replace your hardware regardless of make or type.
2. All price quotes are F.O.B.

When sending rods for repair make sure that they are well wrapped. The rod case should be protected by a cardboard carton. Any space in the rod case between the tips and cap should be filled with tissue paper.

Mail repairs to: **Weir & Son**
101 W. Main Street (Rear)
Los Gatos, California 95030

Preferred shipment is by United Parcel Service. The rod will be returned by United Parcel Service. We will bill prior to shipment.



Weir & Son
101 W. MAIN STREET (REAR)
P.O. Box 1518
LOS GATOS, CA. 95031
(408) 354-2163