

## The Classic 50 Series

This series of 8-foot three-piece rods has been developed from the most famous model Leonard, the number 50. The original was quickly recognized as the perfect blend of smooth action and reserve power, and each of these three models enjoy that

same heritage. These rods feature hard-chrome snake guides and tip-tops, plus a ceramic stripping guide, and are furnished with ferrule plugs, poplin bag and saddle-leather covered case.

### Model 50L

Length..... 8 ft.  
Weight..... 3¾ oz.  
Line..... 4 wt.

A special rod in three-pieces for a 4 weight line. Ideal for smaller flies and delicate presentation. A very responsive, light rod in the classic three-piece configuration.

### Model 50

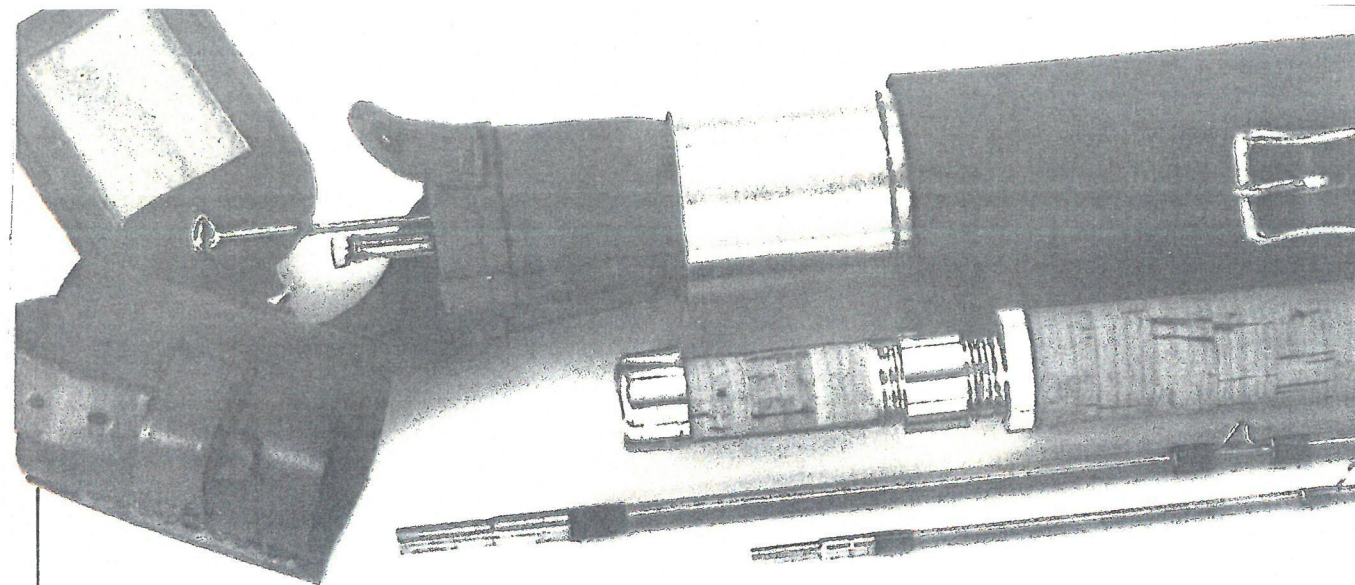
Length..... 8 ft.  
Weight..... 4¾ oz.  
Line..... 5 wt.

Over the years, Leonard has made more Model 50 rods than any other model, and when people refer to a classic 8-foot, three-piece rod, it is the Model 50 they have in mind.

### Model 50H

Length..... 8 ft.  
Weight..... 4¾ oz.  
Line..... 6 wt.

A slightly more powerful version of the Model 50 that handles the popular 6 weight line. Accuracy, versatility, and maximum flexibility provide the angler with a near magical sense of control. Perhaps the ideal trout rod styled for the modern angler.



## The Leonard® Rod

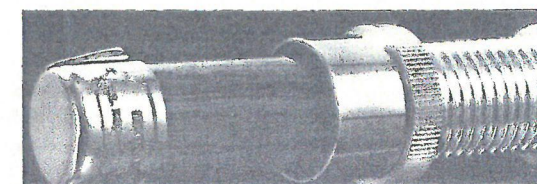
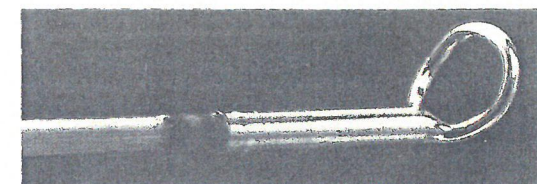
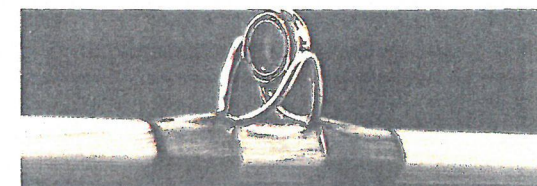
Traditionally, quality fly rods have been fashioned from carefully selected Tonkin Cane. As a rod building material, this particular cane or bamboo exhibits several characteristics that have become the hallmark of classic cane rods such as those crafted by Leonard.

Perhaps the most notable characteristic is that of "delicacy," or the pliant, smooth feel that results from the use of a solidly constructed blank cut to exacting tapers. This "live" feel or action will always foretell a pleasant casting rod, and Leonards have always had this special action.

The second characteristic which is readily apparent is the ease of casting. This is a direct result of the bamboo itself. Bamboo is an extremely efficient material in that the effort required to flex or load the rod is effectively recovered and transmitted to the fly line on the forward cast. At the same time, bamboo rods can be fashioned with exceptionally fine yet strong tips that "give" when necessary to protect the delicate tippets used with today's longer rods and lighter lines.

And finally, a fine, hand-crafted bamboo rod creates its own mystique and pride of ownership. Every rod that leaves our shop is just such a rod, reflecting the unbroken history of Leonard's dedication to excellence. Even the windings on these premium varnished rods — classic tan and dark brown — compliment the warm wood tones to form an overall tribute to quality.

To own a Leonard is to become part of a highly respected yet most enjoyable tradition.





# The Yellowstone Series

The Yellowstone Series feature the slightly heavier tapers which enhance the casting of larger, more wind-resistant flies. Their crisp, yet smooth efficiency in effortlessly casting a fly line has been called nothing short of magic. The shorter, lighter rods add more challenge to the sport, while the longer, heavier rods are at home on the larger western rivers.

## TWO-PIECE SERIES

Model 38H	Length.....	7 ft.
	Weight.....	3¼ oz.
	Line.....	5 wt.
Model 39H	Length.....	7½ ft.
	Weight.....	3¾ oz.
	Line.....	6 wt.
Model 40H	Length.....	8 ft.
	Weight.....	4½ oz.
	Line.....	7 wt.
Model 41H	Length.....	8½ ft.
	Weight.....	5¾ oz.
	Line.....	8 wt.

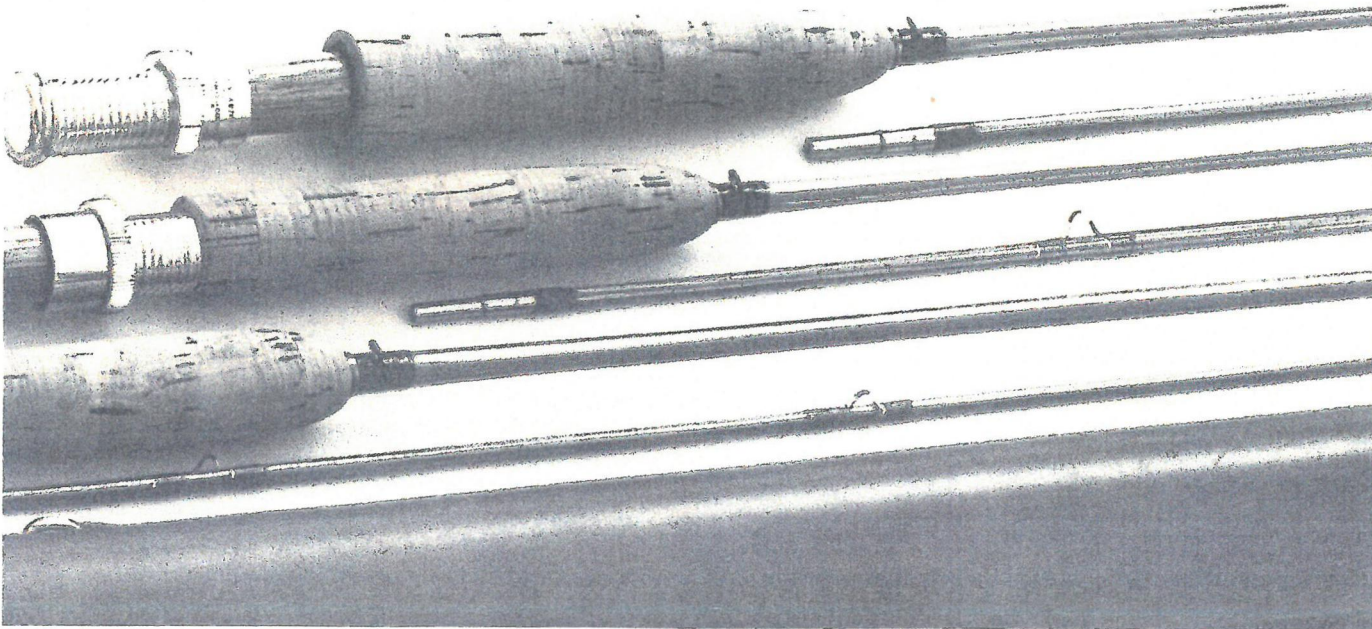
Features include special guide spacing for double-haul style casting and an aluminum oxide, low-bridge stripping guide to enhance the rod's shooting characteristics. Each is fitted with three-piece, reverse-lock reel seat, with an exotic wood spacer, and western-style cork grip. Furnished with two matching tips, ferrule plug, cloth bag and leather covered aluminum case.

Here is the ideal 7-foot rod for a 5 weight line. The 38H has been popular for years with those who want an efficient rod that combines that delicate feel with a faster action rod.

The 39H is the choice for the one-rod trout fisherman. It carries a 6 weight line and is able to handle a wide range of flies, making it an extremely versatile rod.

The Model 40H for a 7 weight line is a favorite of those who look for a rod that speaks with authority. Smooth, yet powerful-the ultimate casting machine.

Here is a rod specifically designed for the western fisherman—a long rod ideally suited for large trout or steelhead. The 41H has all the power you could ask for, and yet has that wonderful, responsive feel that is the hallmark of a Leonard rod.



# The Letort Series

No other rod maker has ever been able to produce true midge rods of this caliber. Extremely delicate, the Letort is for the experienced angler. While not recommended for all fishing conditions, these marvelous rods come into their own late in the season where low-water prevails.

## TWO-PIECE RODS

Model 38L	Length.....	7 ft.
	Weight.....	2¾ oz.
	Line.....	3 wt.
Model 39L	Length.....	7½ ft.
	Weight.....	3¾ oz.
	Line.....	4 wt.
Model 40L	Length.....	8 ft.
	Weight.....	3½ oz.
	Line.....	5 wt.
Model 41L	Length.....	8½ ft.
	Weight.....	3¾ oz.
	Line.....	6 wt.

Each rod has a cork reel seat with nickel-silver pocket butt cap. The 38L and 39L use a slide band, while the 40L and 41L use Leonard's screw-lock reel seat with cork spacer. Furnished with two matching tips, ferrule plug, poplin bag and saddle-leather covered aluminum case.

The Model 38L evolved from the famous "Baby Catskill" rods, and is the lightest, most delicate rod produced today. The only rod designed for flies size 18 and smaller using a 3 weight line.

A 7½-foot rod carrying a 4 weight line was unheard of several years ago, and Leonard was the first to produce this superb combination. An effective rod for calm, open water.

A unique rod for smaller flies fished at greater distances. The extra length makes line mending less of a chore, especially when fishing smaller nymphs in the traditional drift.

With the trend toward longer, more delicate rods that carry lighter lines, Leonard leads the way with this 8½-foot rod for a 6 weight line. A pleasure to cast, the 41L, with its slower action, can present the proper fly at great distances with the required delicacy.

# The Ausable Series

Here is the Series which has become the standard for all varnished bamboo rods. Slower in taper than our Yellowstone Series, these rods are medium in action and are perfectly suited for trout water where a delicate, accurate presentation is demanded. Under these conditions, the Ausable Series is without

## TWO-PIECE RODS

Model 38	Length.....	7 ft.
	Weight.....	3¾ oz.
	Line.....	4 wt.
Model 39	Length.....	7½ ft.
	Weight.....	3¾ oz.
	Line.....	5 wt.
Model 40	Length.....	8 ft.
	Weight.....	4¾ oz.
	Line.....	6 wt.
Model 41	Length.....	8½ ft.
	Weight.....	4¾ oz.
	Line.....	7 wt.

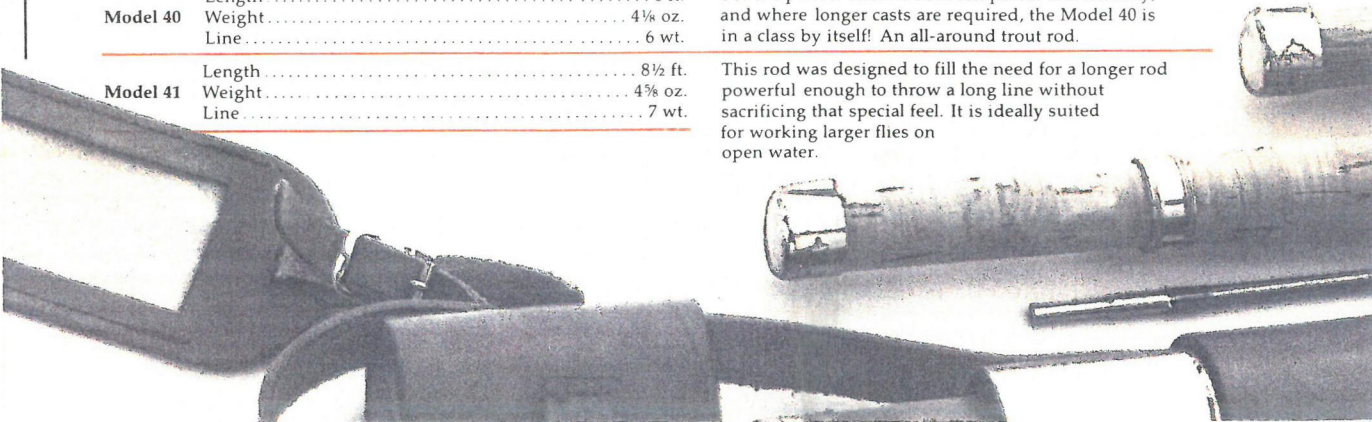
equal. They are ideal trout rods in the Leonard tradition. Each is fitted with Leonard's three-piece, down-lock reel seat with an exotic wood spacer and nickel-silver pocket butt cap. Furnished with two matching tips, ferrule plug, poplin bag and saddle-leather covered aluminum case.

The Model 38 has been the most imitated of all the Leonard rods, and is the standard light trout rod. At 7 feet it is the shortest and lightest of the Ausable Series rods, capable of handling small flies on light tippets.

The Model 39 is an exceptional rod that combines a light action in a medium length. It is currently the most popular trout rod Leonard offers, and is well suited to most trout fishing conditions.

For the perfect balance between power and delicacy, and where longer casts are required, the Model 40 is in a class by itself! An all-around trout rod.

This rod was designed to fill the need for a longer rod powerful enough to throw a long line without sacrificing that special feel. It is ideally suited for working larger flies on open water.

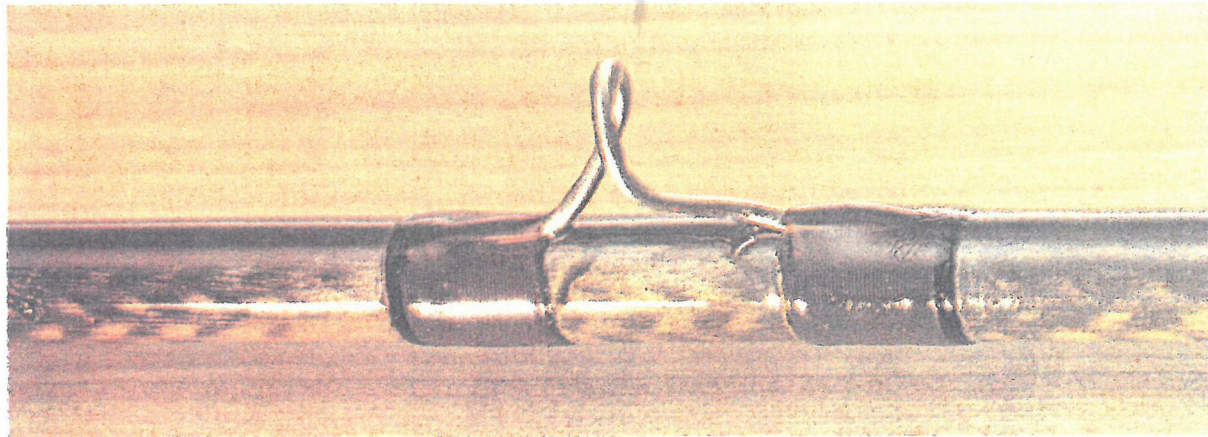




## Introducing the Leonard

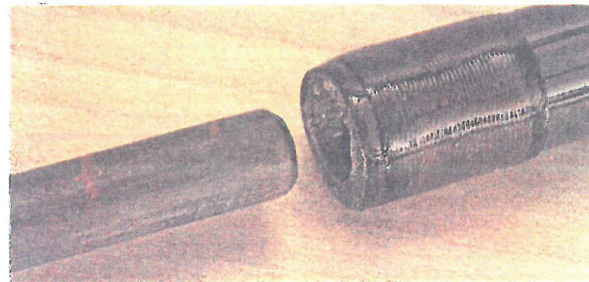
### GOLDEN SHADOW

## Carbon-Fibre Rod

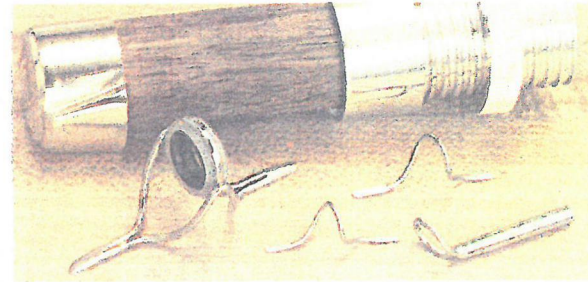


The rich, dark glow of reflected light highlights a criss-cross pattern of woven carbon-fibre over the straight core fibers. In cross-section, the Golden Shadow would be much the same as a bamboo rod—with the power fibers running the full length of the rod. Also shown is the superb finish and precise windings on each Golden Shadow.

The Boron reinforced spigot ferrule is incredibly strong and long-wearing. Boron permits extremely precise machining for a perfect rod joint. This design produces a smooth, uninterrupted flow of power from butt to tip.



The highest quality Leonard hardware is standard on the Golden Shadow Series. Included are aluminum oxide stripping guides, stainless steel and hard chrome snake guides and tip tops. Each rod is furnished with poplin bag and custom aluminum case.



*Pure carbon-fibre technology—at last—overcomes a multitude of sins committed in the name of "graphite."*

## The graphite promise fulfilled

Graphite! Has there ever been a synthetic that has so captured the imaginations of manufacturer and angler alike? Light in weight and capable of tremendous line acceleration, it was hailed as the ultimate rod-making material. Yet, for several reasons, some promises have proven to be empty. The first being that early graphite technology required rod blanks to be manufactured by a rolling process; a type of construction that often resulted in non-uniform wall thickness, weak spots, twists and crooked sections. Secondly, adding more tarnish to the graphite image, was the use of less costly forms of graphite and the manufacture of graphite-fiberglass composites.

We at Leonard began an intensive search to overcome these problems; a search that led us to England where carbon-fibre was discovered, and to the intensive developmental work done by Rolls-Royce.

Fibre technology was thoroughly investigated. As a result, a new process was developed that would impart uniform wall strength, consistency of flex, and smooth action.

A rod constructed of carbon fibre but similar to the natural structure of bamboo—a rod whose power fibres run the full length—a rod capable of bearing the Leonard name—The Leonard Golden Shadow.

Leonard uses no fiberglass in its blanks. We believe that pure carbon-fibre is a quantum step forward in rod-making technology. With lightweight, high modulus of elasticity, and tremendous tensile strength, it is a material capable of being formed into very high quality rod blanks.

From a design standpoint, it was also decided to incorporate a spigot ferrule reinforced with Boron fiber. Incredibly strong,

Boron allows the spigot to be precision ground for precise fit, and the design allows for a smooth, uninterrupted flow of power and action from butt to tip, providing effortless and accurate casting.

To these obvious construction advantages, Leonard has added more than 100 years experience in building the finest fly rods in the world. The result is a line of rods featuring special Leonard tapers to bring a new dimension to your fly fishing. We believe that the Golden Shadow has fulfilled the promise of graphite. Leonard has never made a more responsive synthetic fiber rod than the Golden Shadow. This quicker response can lead to tremendous accelerations in line speed with a resultant increase in casting distance. This responsiveness partly explained by the higher modulus of elasticity or stiffness of the fibers themselves combined with their extremely fast rate of recovery.

Further influencing distance is the rod diameter itself. Substantially less material is required to produce a carbon-fibre rod of the same flex and line capability as a bamboo or fiberglass rod. The diameter of a Leonard Golden Shadow rod, for example, may measure 30% less than that of a Fiberglass rod measured at the same point. This results in less wind resistance, and ultimately less wasted energy expended by the caster. In other words, more useful energy is available to be transmitted to the fly line resulting in longer casts.

Finally, much has been said about the ability of graphite to handle varying line weights. In some instances this material characteristic has been abused to the point where proper rod design has suffered. The careful designer is first concerned about maximizing the ability of the rod to do what it was intended to do with the line it was intended to handle. This is the basis for the Golden Shadow design, but various options are still available to the caster. Individual anglers may find that a line size up or down is still satisfactory for them, but beyond this, the design characteristics of the rod are being ignored, and performance will suffer.

You may be assured that each rod and line designation in the Golden Shadow Series is totally correct and will perform in an outstanding manner. In addition, you will find that these rods are designed to cast efficiently, to present a fly with delicacy and accuracy and to hook and play a fish effectively. We believe them to be the finest carbon-fibre rods in existence.





The Leonard  
**GOLDEN SHADOW**

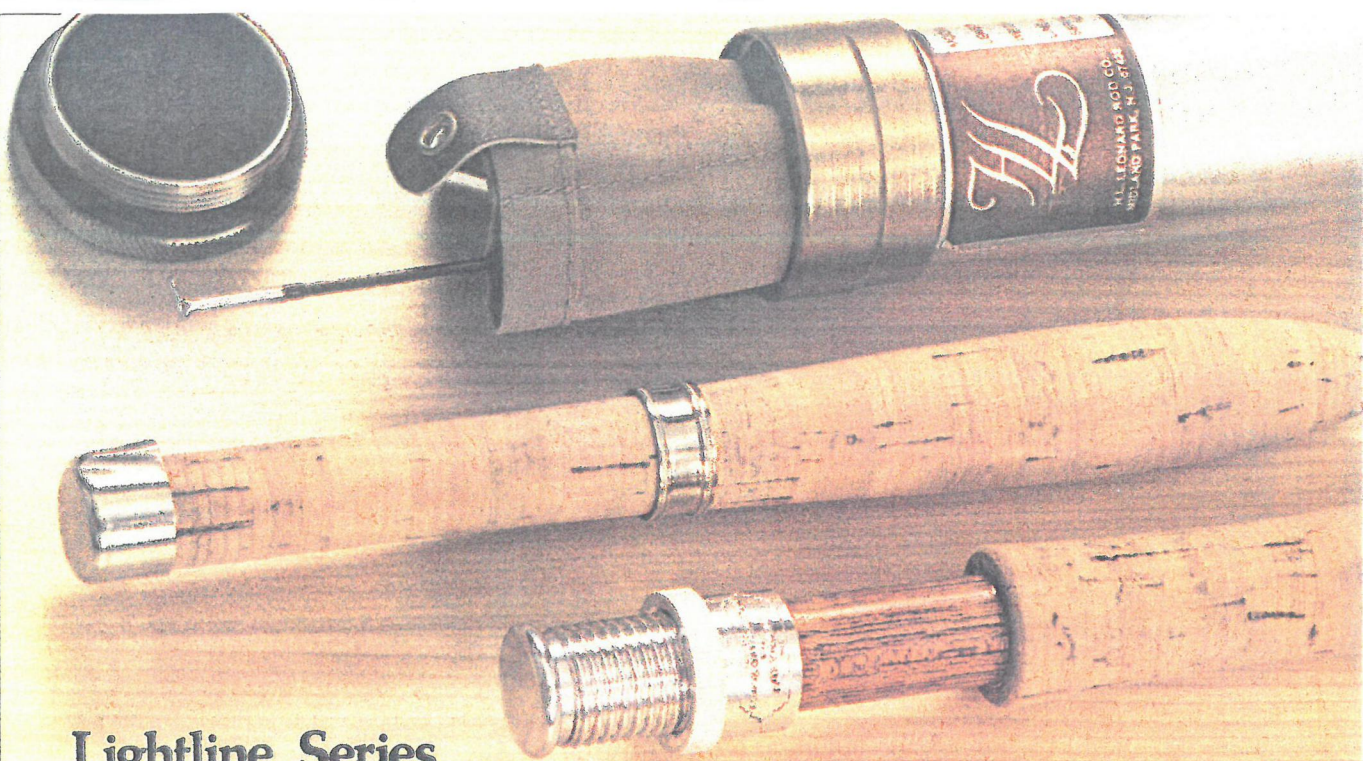
Carbon-Fibre Rod

Medium Line Series

These rods effectively combine the characteristics of pure carbon-fibre with Leonard's exacting tapers. The result provides an entire series of dynamic rods that maintain the Leonard "live" action. All are capable of throwing tight, narrow loops and providing absolute control for precision casting.

The shorter, lighter rods are well suited for delicate, controlled angling while the longer, heavier rods have the power to drive a fly long distances over larger water. Each is fitted with Leonard three-piece screw-lock reel seat, and western style grip.

Model 755G	Length	7½ ft.	After the early season, and the streams return to normal levels, this versatile model is the first choice of many for season-long pleasure.
	Weight	2 oz.	
	Line	5 wt.	
Model 756G	Length	7½ ft.	A popular length and a popular line weight combine to make this a standard for the trout fisherman's consideration
	Weight	2¼ oz.	
	Line	6 wt.	
Model 805G	Length	8 ft.	A very smooth casting rod that presents small to medium flies accurately and precisely over a wide casting range.
	Weight	2¾ oz.	
	Line	5 wt.	
Model 806G	Length	8 ft.	Classic specifications and classic handling combined to provide a superior rod for the very popular 6 weight line.
	Weight	2¾ oz.	
	Line	6 wt.	
Model 807G	Length	8 ft.	The ability to handle larger flies as well as small bugs and poppers, plus the bonus of longer casts on big water, characterize this very functional model.
	Weight	2¾ oz.	
	Line	7 wt.	



Lightline Series

These delicate rods are designed with special tapers for light-weight lines and those light tippets often essential for success over critical fish and low water conditions. Even a medium-

size trout played with one of these rods is one of the great thrills in fly fishing. Features include all-cork handles with nickel-silver butt caps and slide bands.

Model 703G	Length	7 ft.	A unique blend of crisp, smooth responsiveness and delicacy to handle a light No. 3 line with precision and control.
	Weight	1½ oz.	
	Line	3 wt.	
Model 704G	Length	7 ft.	Accuracy and easy-handling characterize this light line model that affords great casting control with a No. 4 line
	Weight	1½ oz.	
	Line	4 wt.	
Model 754G	Length	7½ ft.	Considered by many to be the "ideal rod" for general light line, small-fly angling requirements.
	Weight	1¾ oz.	
	Line	4 wt.	
Model 804G	Length	8 ft.	A longer rod that enhances line control and line mending while retaining the tippet-protecting suppleness needed for critical work
	Weight	2¼ oz.	
	Line	4 wt.	
Model 504G Lightning rod	Length	5 ft.	Length and weight make this one-piece rod truly unique, and even a ten-inch fish is a real thrill on this lively rod. A personal favorite of the late angling great Arnold Gingrich, who called it "the final word" in short rods
	Weight	¾ oz.	
	Line	4 wt.	



## GOLDEN SHADOW

**Model 855G** Length..... 8½ ft.  
Weight..... 2¾ oz.  
Line..... 5 wt.

**Model 856G** Length..... 8½ ft.  
Weight..... 2¾ oz.  
Line..... 6 wt.

**Model 857G** Length..... 8½ ft.  
Weight..... 3 oz.  
Line..... 7 wt.

**Model 906G** Length..... 9 ft.  
Weight..... 3½ oz.  
Line..... 6 wt.

The special properties of our graphite fibers, plus the unique Leonard tapers, are readily apparent in this outstanding, smooth-handling longer rod for the widely used 5 weight line.

Short delicate casts—or long accurate ones—it matters little to this versatile model. High backcasts, line control and handling ease are yours in this superior rod.

Extra rod length plus comfortable control of the functional 7 weight line assure that this rod will see lots of action under many varied conditions.

Our carbon fibre technology permits the design of a long, light line model that will be at home in many a situation where absolute line control is desired.

## Heavy Line Series

Expressly designed to meet the requirements of the demanding salmon and steelhead angler. Exceptionally light but with smooth power to cast large, bulky flies without casting fatigue.

**Model 858G** Length..... 8½ ft.  
Weight..... 3½ oz.  
Line..... 8 wt.

**Model 908G** Length..... 9 ft.  
Weight..... 3¾ oz.  
Line..... 8 wt.

**Model 909G** Length..... 9 ft.  
Weight..... 4½ oz.  
Line..... 9 wt.

**Model 10/10/3G** Length..... 10 ft.  
Weight..... 4¾ oz.  
Line..... 10 wt.

Each rod is fitted with two low-bridge aluminum oxide stripping guides to enhance shooting characteristics. Other features include 3-inch detachable extension butt with rubber button and a three-piece all metal screw lock reel seat.

Light in weight with an easy progressive power that makes this rod the choice of many big-water anglers.

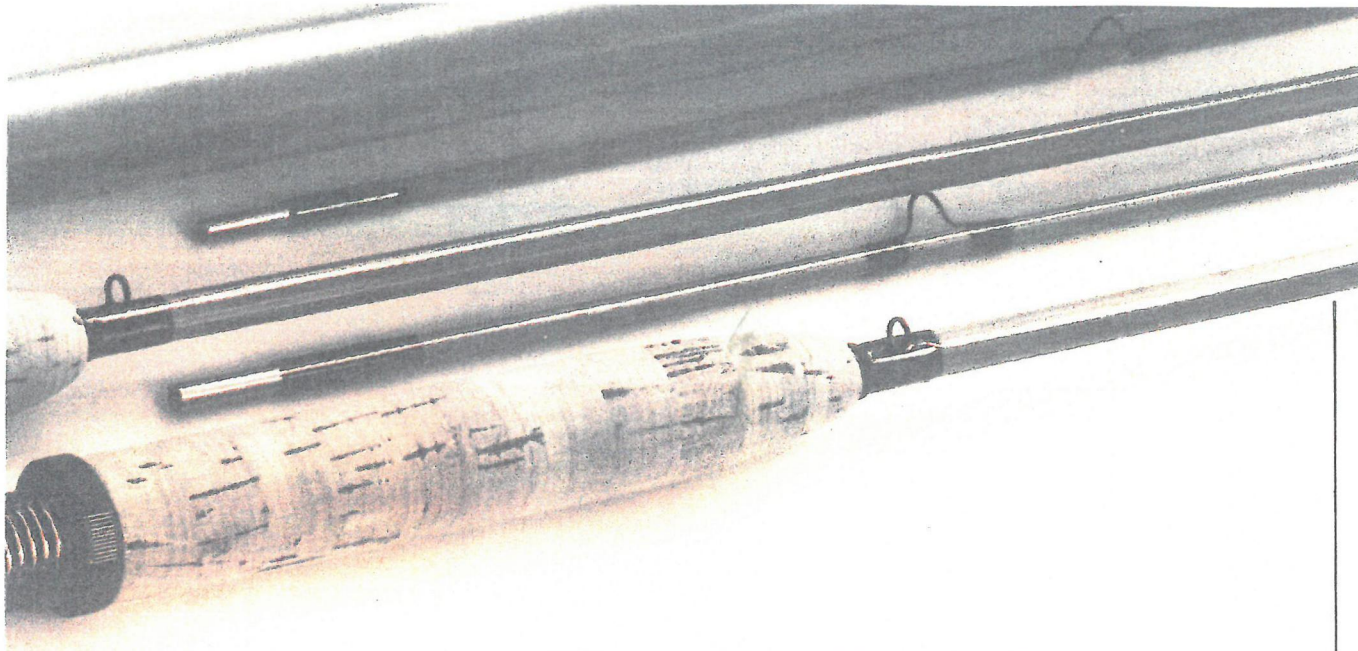
Slightly longer, but just as smooth, accurate and versatile. A perfect balance between power and control. Ideally matched to the No. 8 weight line.

The recommended line weight for many salmon and steelhead situations is handled perfectly by this uncommonly capable rod.

At last—after intensive development we are able to offer a combination of power, light weight, and length never before found in such a rod. And it breaks down to three pieces for ease of transport, with absolutely no sacrifice in its performance. Another exceptional rod from Leonard. For saltwater as well as salmon.



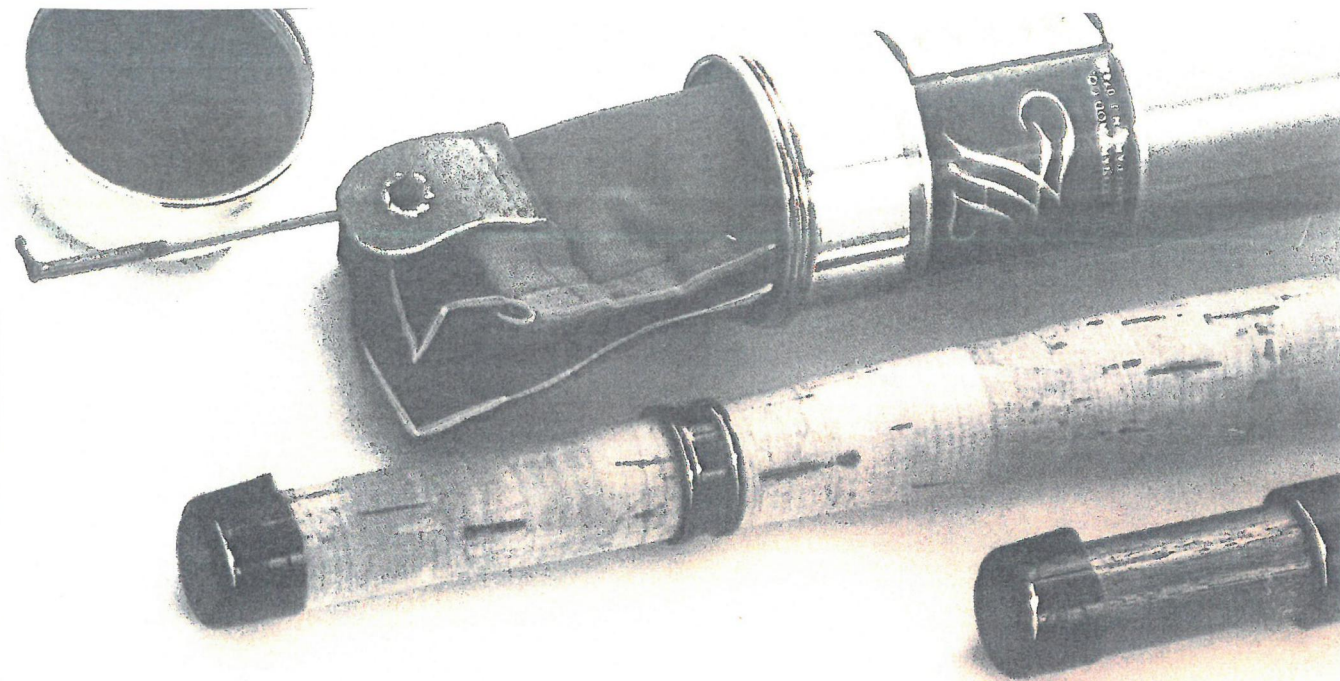




Model 804 Midge	Length.....	8 ft.	A special rod for the light-line enthusiast that will handle and protect tippets down to 8X.
	Weight.....	3½ oz.	
	Line.....	4 wt.	
Model 805 Midge	Length.....	8 ft.	A smooth, longer rod for smaller dry flies and nymphs. Ideal for Western spring creeks.
	Weight.....	3½ oz.	
	Line.....	5 wt.	
Model 856 Midge	Length.....	8½ ft.	An 8½ foot medium-line rod that can really make fishing a pleasure. Higher backcasts plus easy line mending make the 856 a forgiving rod.
	Weight.....	4½ oz.	
	Line.....	6 wt.	

### Standard Series

Model 704 Standard	Length.....	7 ft.	A delightful, delicate rod that has quickly become a favorite of light-tackle trout fishermen.
	Weight.....	2¾ oz.	
	Line.....	4 wt.	
Model 755 Standard	Length.....	7½ ft.	The Model 755 is a light-action rod in a medium length that is ideal for most eastern trout streams.
	Weight.....	3½ oz.	
	Line.....	5 wt.	
Model 806 Standard	Length.....	8 ft.	A longer rod that sacrifices nothing in terms of precise control and delicate presentation. Currently the most popular Duracane model produced, and a fine all-around rod.
	Weight.....	4¾ oz.	
	Line.....	6 wt.	
Model 857 Standard	Length.....	8½ ft.	Long, positive casts with little effort are the mark of this rod. Great for controlling larger nymphs fished upstream.
	Weight.....	4¾ oz.	
	Line.....	7 wt.	
Model 908 Standard	Length.....	9 ft.	A large-water rod which fills the need for a medium-action rod that handles larger flies and bass bugs.
	Weight.....	5½ oz.	
	Line.....	8 wt.	



## The Leonard Duracane® Rods

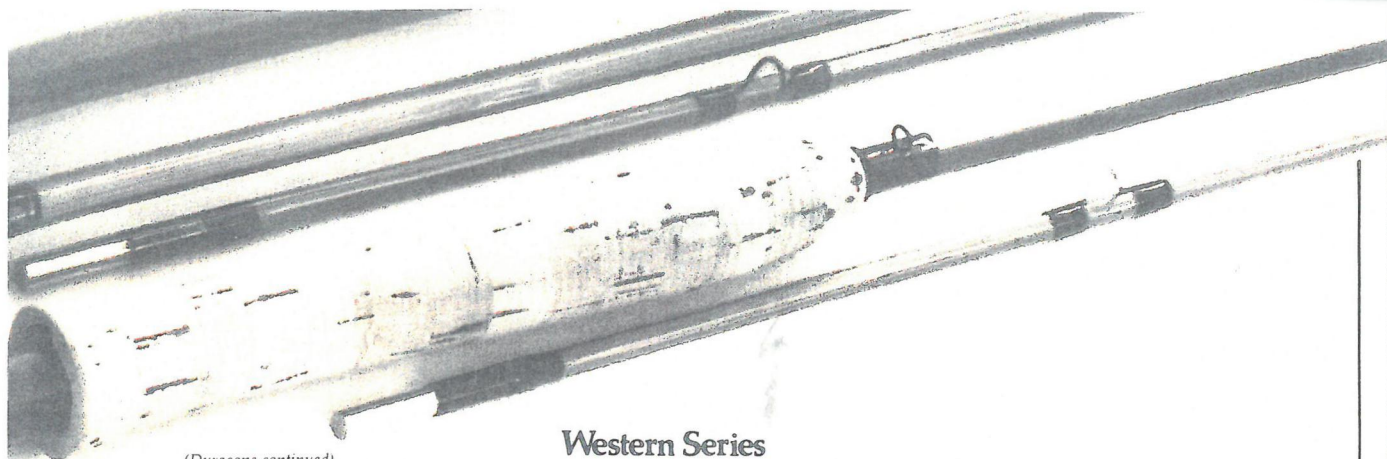
Leonard Duracane rods are fished by experienced anglers who can appreciate the very finest of split-bamboo. With the development of these fine rods, Leonard has met the demand for a medium-priced rod that does not sacrifice quality or craftsmanship. The unique combination of special tapers and quality fittings makes the Duracane unlike any other rod, and yet its close kinship to the famous original Leonard rod is unmistakable. The impregnation process provides a virtually maintenance free rod without unduly affecting the desired action. Each Duracane tapers, resulting in a finer-tip rod that works from butt to tip.

Each Duracane rod is wound dark brown and tipped black. Hardware is finished in black to complement the rich, brown-tone bamboo. The Midge Series have all-cork reel seats with nickel-silver pocket butt caps. Standard rods are equipped with three-piece down-locking reel seats with walnut spacers. The Western Series rods feature Leonard's three-piece reverse-lock reel seat with walnut spacer. Each Salmon Dry Fly rod is mounted with the three-piece reverse locking reel seat and detachable 3-inch extension butt. All are furnished with extra tip, ferrule plug, poplin bag and custom aluminum case.

### Midge Series

Model 703 Midge	Length.....	7 ft.	The lightest Duracane model produced. A delightful rod that will handle flies down to size 28.
	Weight.....	2¾ oz.	
	Line.....	3 wt.	
Model 754 Midge	Length.....	7½ ft.	A delicate rod for small, quiet water, yet with a reserve of power necessary to turn over long leaders.
	Weight.....	3¼ oz.	
	Line.....	4 wt.	

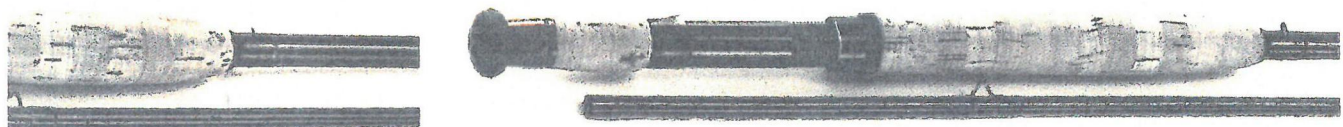




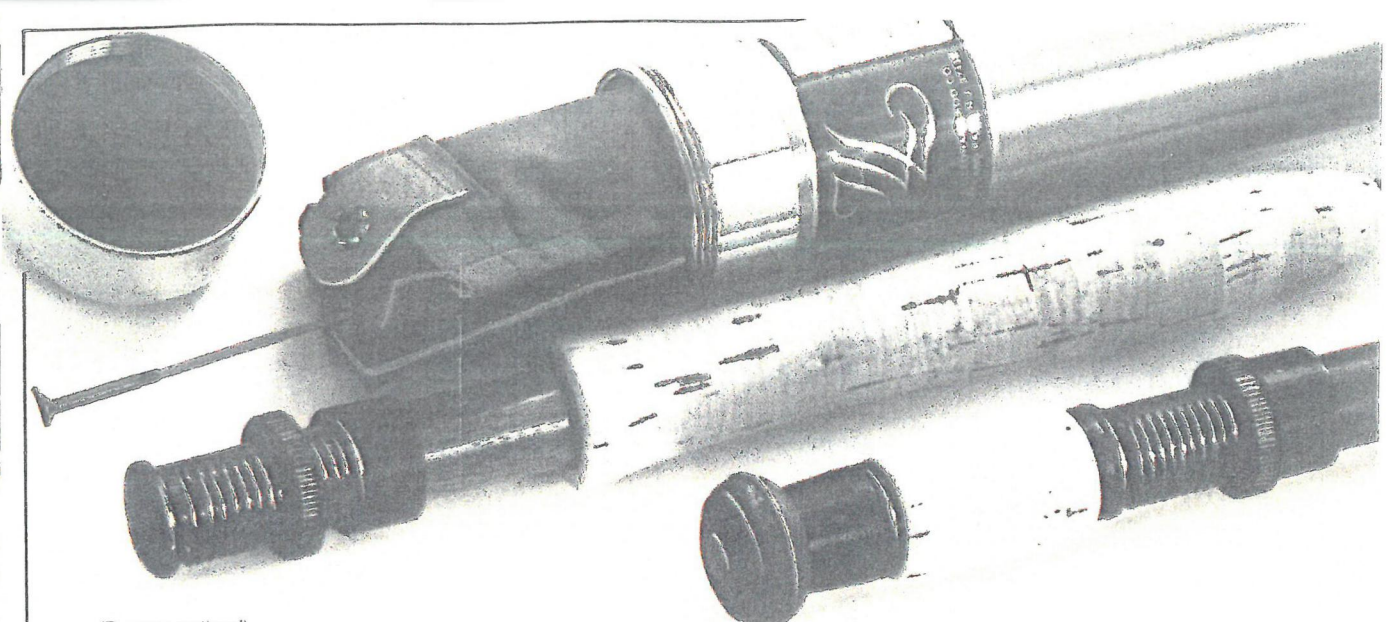
Western Series

(Duracane continued)

Model 705 Western	Length.....	7 ft.	The Model 705 is a necessity when it comes to controlled casts on a medium-size stream. An extremely versatile rod in a shorter length
	Weight.....	2 7/8 oz.	
	Line.....	5 wt	
Model 756 Western	Length.....	7 1/2 ft.	A medium-length trout rod that incorporates the necessary power with required responsiveness. A basic choice in Duracane for the one-rod trout fisherman.
	Weight.....	3 3/8 oz.	
	Line.....	6 wt	
Model 807 Western	Length.....	8 ft.	The Model 807 is deceptively powerful and has the ability to deliver long, accurate casts under difficult conditions. Yet it is smooth and subtle, and can handle a wide range of flies.
	Weight.....	4 1/2 oz.	
	Line.....	7 wt.	
Model 858 Western	Length.....	8 1/2 ft.	This is the choice of the large-water angler who often needs the extra power to cast sinking lines with large streamers and nymphs. The ideal rod for big Western rivers.
	Weight.....	5 1/4 oz.	
	Line.....	8 wt.	
Model 909 Western	Length.....	9 ft.	Here is the rod for large trout, steelhead and bass. The Model 909 is a true workhorse, yet is not tiring for the caster to use.
	Weight.....	5 1/2 oz.	
	Line.....	9 wt.	



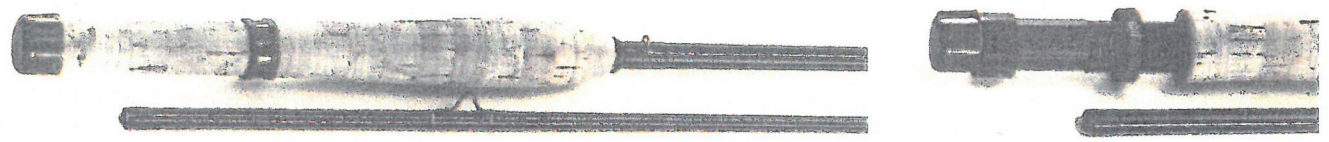
Model 806F	Length.....	8 ft.	Leonard three-piece screw-lock reel seat with impregnated wood spacer and western-shape cork grip. An easy casting action from butt to tip gives this rod exceptional range and capabilities.
	Weight.....	3¾ oz.	
	Line.....	6 wt.	
Model 858F	Length.....	8½ ft.	All-metal reel seat with western-shape cork grip. There is an optional 3-inch detachable extension butt. A big-water rod, capable of long, accurate casts. Handles large flies, bugs and poppers.
	Weight.....	4¾ oz.	
	Line.....	8 wt.	
Note: 858F & 909F			
With the extension butt they become 858F-SDF and 909F-SDF. There are no separate SDF's in glass.			
Model 909F	Length.....	9 ft.	All metal reel seat with Western shape cork grip. There is an optional 3 inch detachable extension butt. An ideal rod for salmon, bass, steelhead, and light saltwater use. Powerful and responsive.
	Weight.....	4¾ oz.	
	Line.....	9 wt.	
Model 705 Fly/Spin	Length.....	7 ft.	All-cork reel seat with aluminum slide bands and aluminum butt cap. Crisp and responsive without overferruled harshness. Exceptionally practical and convenient because it can be used as a spin rod as well
	Weight.....	3¼ oz.	
	Line.....	5 wt.	



(Duracane continued)

Salmon Dry Fly Series

Model 858 SDF	Length.....	8 1/2 ft.	A powerful rod for a No. 8 weight line, yet it only weighs 5 1/4 ounces, making it lighter than many comparable glass rods!
	Weight.....	5 1/4 oz.	
	Line.....	8 wt.	
Model 909 SDF	Length.....	9 ft.	The choice of the long-rod, long-line traditionalist. A rod that casts line with real authority under any conditions.
	Weight.....	5 3/8 oz.	
	Line.....	9 wt.	



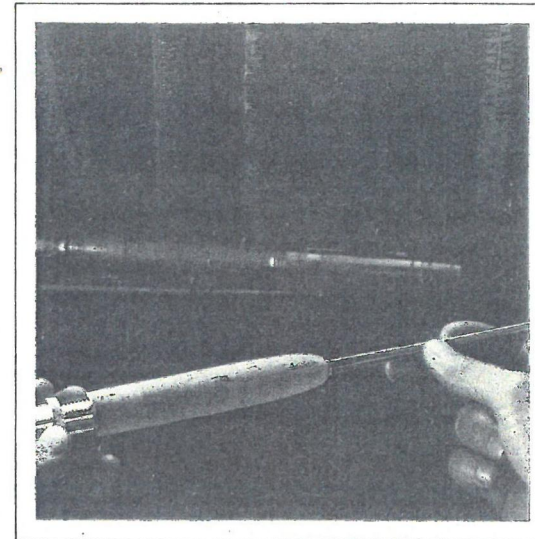
Leonard Fiberglass Rods

Make no mistakes—these are not average glass rods by any means. They are a fine-tuned, high performance product. The fact is, a Leonard fiberglass rod may actually out-perform lesser quality bamboo or graphite rods. The reason is simple—the skill and experience of the rod designer.

Each Leonard glass rod is designed to meet a particular angling requirement. They combine the action, appearance and performance that is the hallmark of all Leonard rods. Features include spigot ferrules, dark brown winding with black tipping, black finish aluminum oxide stripping guides and all-black hardware. Each rod is furnished with poplin bag and aluminum case.

Model 704F	Length.....	7 ft.	All-cork reel seat with nickel-silver slide band and pocket butt cap. Light and delicate with sure, positive handling that provides outstanding performance with small flies and light leaders.
	Weight.....	2 3/8 oz.	
	Line.....	4 wt.	
Model 755F	Length.....	7 1/2 ft.	Leonard three-piece, screw-lock reel seat with impregnated wood spacer and western-shape cork grip. Versatility and line control highlight this favorite for a 5 weight line.
	Weight.....	3 3/8 oz.	
	Line.....	5 wt	





*Manufacturers of  
rather fine  
fishing rods and  
tackle  
since 1869*



H. L. LEONARD ROD CO. • Central Valley, New York 10917

a Johnson wax associate