

Thomas & Thomas



CATALOG 1982

\$2.00

E. F. PAYNE ROD CO.

ESTABLISHED 1908

INCORPORATED

(PAYNE)

REG. U.S. PAT. OFF.

AGENTS IN PRINCIPAL CITIES
HIGHLAND MILLS N.Y.
TELEPHONE 3601

J. A. PAYNE
PRESIDENT

W. E. COLLINS
VICE-PRESIDENT AND TREASURER

January 20, 1958.

Mr. R. H. Salminen
2 Roosevelt Street
Wayland, Massachusetts.

Dear Mr. Salminen:

Thank you for your very nice letter of January 11th.

I note with interest your comments on the quality of workmanship in the fishing tackle line. How right you are, and this departure from quality workmanship, reflects the changing pattern of our present way of life. The real old hand craftsmen are passing out, and the younger generation haven't the incentive to learn hand work, primarily, because the remuneration is less, due to low production as compared to the machine age.

I started making rods with my father back in 1908 at the age of 14 years, so you can see I have a half century of one line of work, as I will be 64 next month. Bamboo fly rods have been superseded for over seventy years, I wonder if glass will last that long.

It's nice doing work for a man who appreciates quality work like yourself, and others with whom we do business, and I feel that a great many anglers take enough pride in ownership to justify the effort to produce it.

With kindest regards, I am

Sincerely yours,

E. F. Payne Rod Co., Inc.

46 Gantong Road
Acton, MA 01720

Thomas & Thomas
22 Third Street
Turners Falls, MA 01376

Fellow Craftsmen:

As I unpacked my long awaited Montana 8 1/2 Flyrod, I knew at once it was, as anticipated, IRFSCIAA. I wish to extend my gratitude and congratulations to you for the outstanding quality of this rod.

Many years ago my father was a No. 1 Workman in Finland and later became a personal body guard of the Czar. As a young boy, I grew up with a great respect for fine sporting equipment. The years that respect ripened to a genuine love for the Flyrod and Hardy rods. In latter years, Jim Payne did much work for me, and to me, as others, he was a "Saint".

As I have established high standards over the years, so also Jim Payne and improve quality beyond that of his father. I am certain that Jim Payne would be immensely proud of your company. Thomas & Thomas and more than respectful of the higher standards of excellence which you have established for all time in the ancient art of Rodbuilding.

It is with great pride that I place your rod on the top of my battery of Classics. Traveling both here and abroad, examining rods of top craftsmen, I consider Thomas & Thomas quality to be the ACME OF PERFECTION!

I will be anxiously awaiting the arrival of a "Paradigm".

Most sincerely,

Ray Salminen

Ray Salminen

24 July 1981



Recently, Thomas & Thomas was selected by the Department of State to construct a special Sans Pareil rod for presentation by President Reagan, on behalf of the American people, to Prime Minister Malcom Frasier of Australia.

Prime Minister Frasier is an avid and accomplished trout and salmon fisherman with world class angling experience... and we are happy to report that the Prime Minister was immensely pleased with President Reagan's gift. When the pressures of Affairs of State has subsided, he was able to thoroughly enjoy using the rod, thanks to the timely cooperation of the Atlantic Salmon in one of New Brunswick's famed salmon rivers. The Prime Minister has indicated that his new T&T rod will see considerable exercise on the fertile waters of Tazmania and New Zealand this season.

Everyone involved with T&T takes personal pride in this event. We are especially honored that the Thomas & Thomas image of excellence has allowed us a small part in continuing the good will traditionally shared by the people of our country and the people of Australia.



T&T BAMBOO

Split a piece of vintage Tonkin bamboo—a beautiful, natural substance in itself (the scientific name “*Arundinaria Amabilis*” means “lovely reed”); straighten the strips over an open flame; now heat temper the bamboo to strengthen it and give it life; miter the strips to 60° precisely tapered segments; glue six strips together to form a butt and six more for each tip (so neatly that the glue line is all but invisible to the naked eye). Now attach Nickel Silver ferrules, fashioned by hand from precision tubing with the aid of some silver solder and a lathe; glue on some cork and shape it into a grip; add a reel seat (handmade from pieces of metal and a carved piece of walnut which has been given five coats of hand rubbed varnish). Now straighten the rod sections (again over a flame); wind on guides (impeccably); then varnish the finished rod so that it has the appearance of wet glass.

So far we have skimmed over some forty-five hours of hand work spread over a period of months—and we haven’t mentioned any of the problems encountered along the way. Any way you put it, you’ve over-simplified it. However, there are some important features in the building of a T&T which set it apart from the ordinary, and which should be mentioned:

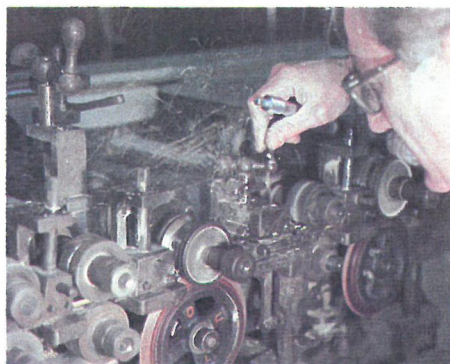


Flaming and Splitting the Bamboo—Our exclusive method of hand tempering over an open flame greatly enhances the resiliency of our vintage pre-embargo bamboo and brings out its rich color.

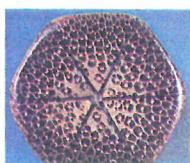
We still split our bamboo by hand, with the grain (although more time consuming than the commercially popular “rip sawing”), to maximize the continuous parallel fibre structure.

Taper Design—This is the single most important feature related to rod action. Without proper tapers, even the most finely crafted and detailed rods . . . rods which are cosmetically perfect, remain commonplace. Even a few thousandths of an inch, redistributed, make the difference between a superior and a mediocre rod action. The T&T tapers have been tested, proved and improved over

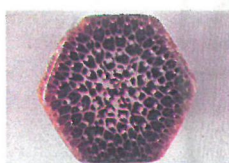
many years. Our obsession for perfection in this area is the reason why “performance” has become the keynote of the Thomas & Thomas rod. This, in combination with our unmatched finishing capabilities, create the “total” rod. A T&T rod never falls short of total perfection.



Planing the Strips—The split strips must be planed to 60° triangular segments and tapered in this same operation to conform precisely to the intended taper of the final hexagonal laminate. For this we use a precision miller—with it we can plane strips to a complex configuration, and far more accurately than human hands alone could do. It enables us to produce six identical strips necessary for laminating an absolutely symmetrical rod section . . . critical to flawless performance.

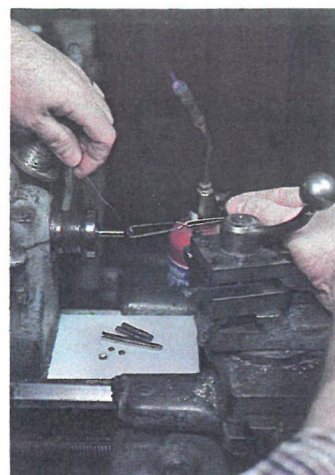


THEIRS

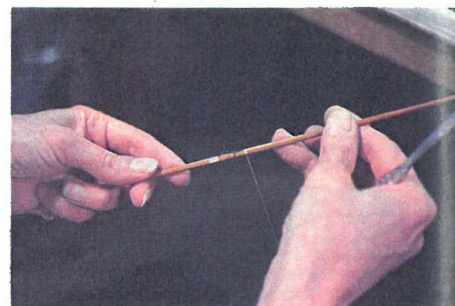


OURS

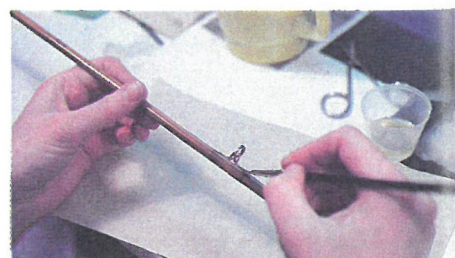
Component Parts—With the exception of guides, all component parts from reel seats to ferrules are made at the T&T shop; each shows the unmistakable T&T mark of workmanship. It is our conviction that each part should be a thing of beauty, and each part is therefore given a jewel-like finish.



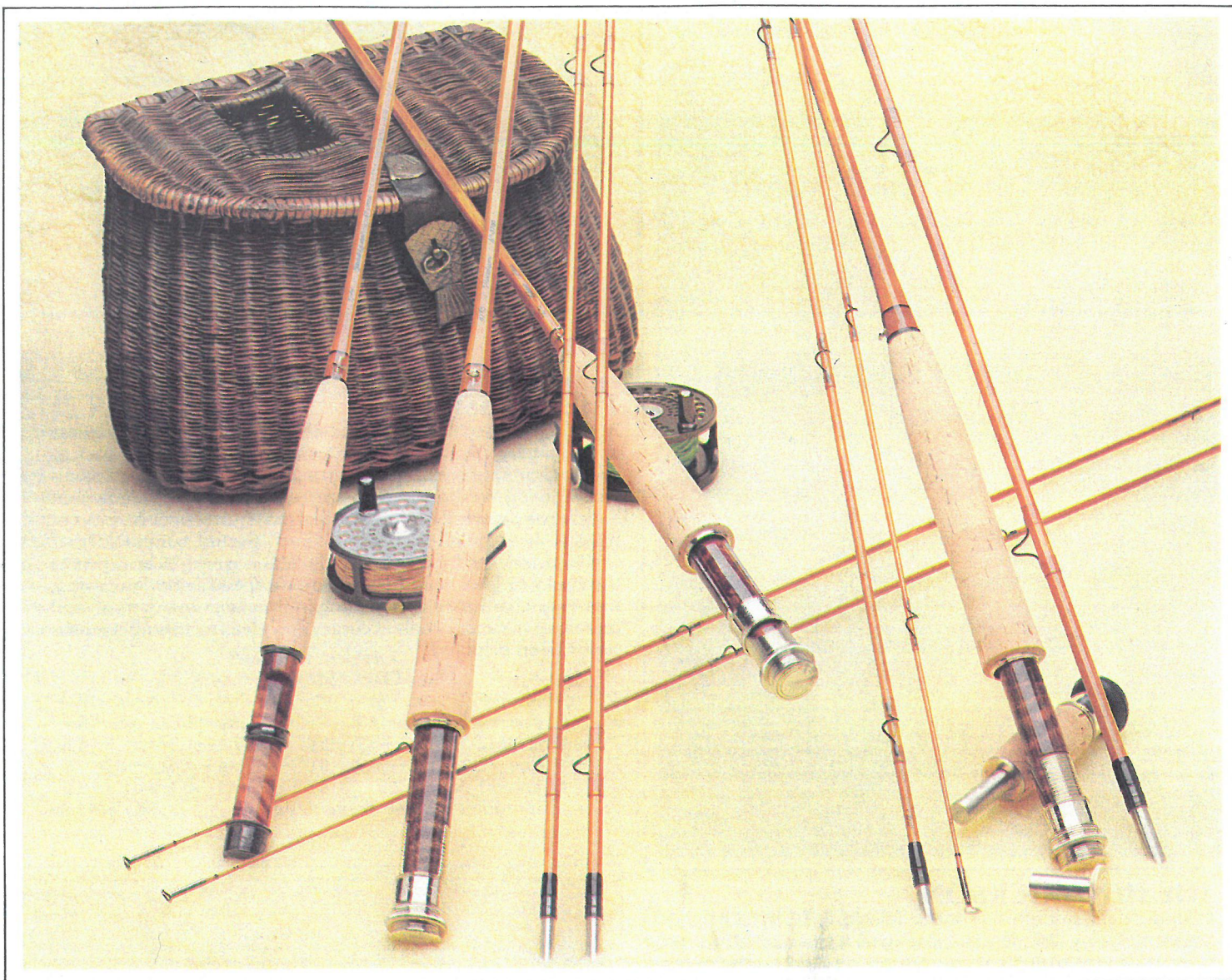
Ferrules—With the aid of a lathe and some silver solder, we tailor make our ferrules from precision drawn nickel silver tubing. Since we make them to fit the rod, and not visa-versa, this frees us from making any compromise in the rod tapers as would be necessary with the use of standard sized ferrules.



Wrapping Guides—There is no substitute for hand winding of guides on a rod. At Thomas & Thomas the results are impeccable—it is commonly acknowledged that the mounting of guides on a T&T rod is an exercise in perfection.



Finish—Aside from control of dust, temperature and humidity, there is no shortcut to perfection in the application of varnish other than long arduous hours of skilled hand work. However, our results speak for themselves, for the beauty of our varnish work is unrivaled. A Thomas & Thomas rod looks like what it is—the finest rod that human hands can create.



Simply the epitome of the rodmakers art. When a man says he believes a Thomas & Thomas to be the finest rod ever built, he likely owns a T&T bamboo rod . . . for these are the rods that have turned the heads of both fly fishermen and rodmakers alike. The many hours of hand work show everywhere . . . both in performance and detail . . . from the distinctive reel seat to fine tip. The Classic alone requires over 30 hours of skilled handwork to construct and each of our other models, no less than 45 hours of hands-on time to build. To appreciate the level of craftsmanship, one should compare them not merely with the rods of current makers, but with the great Classics of all time . . . for this is the theatre in which we proudly offer these fine rods.

All T&T rods are built from our very finest bamboo. The various available actions . . . each distinctive . . . are the result of complex compound tapers developed at our shop and proven in the field to yield supreme balance and casting finesse. The flamed tones of the bamboo are complimented by the translucent tan guide wraps with medium brown edgings and complimentary darker brown wraps at tip-tops and ferrules. All models **come with an extra tip** and are packed in a tailored protective sack and our custom brass capped, aluminum case. **All models may be ordered, at your option, with either our varnished or impregnated/buffed finish.**

All Thomas & Thomas Trout Models are fitted with rich, varnished walnut spacer nickel silver reel seats. The Salmon Models are fitted with your choice of the walnut spacer seat with a permanent or detachable fighting butt, or our full anodized aluminum "SSFB" reel seat featuring a self-storing, pull out fighting butt. Either seat at no extra cost.

Listed here is the code for the style of grip and seat we have chosen to best compliment each rod model. These have been selected for style, function, beauty and balance. Each rod model is coded with the corresponding letter/number to indicate the grip/seat style we feel looks and performs best with that rod.

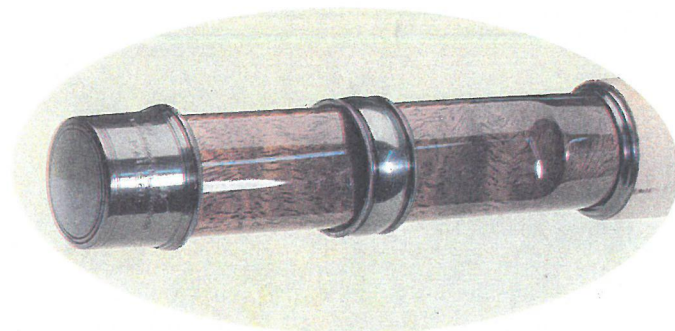
Grip Code: A—Standard Cigar B—Western Style

Reel Seat Code:

1. Miniaturized walnut spacer with oxidized nickel silver cap and ring.
2. Standard sized walnut spacer with oxidized nickel silver cap and ring.
3. Mortised walnut spacer with uplocking nickel silver screw lock.
4. Mortised walnut spacer with uplocking nickel silver screw lock and a detachable fighting butt.
5. Full anodized aluminum "SSFB" seat featuring a self storing, pull out fighting butt.

Ordering Your New T&T Bamboo Rod

We do maintain a limited and constantly changing inventory of our more popular rod models and it is possible that the rod you are seeking may be in stock for immediate delivery. Should this not prove out, the current wait for a new T&T Bamboo Rod is six to eight months. When you place your order, we require a \$100 non-refundable deposit, with the balance due when the rod is completed. We urge you to call about the availability of the model in which you are interested, prior to placing your order, for current, up-to-the-minute delivery information.



THE CLASSIC

A joy in the hand and a gem to behold . . . one need only to see and **compare** our Classic rods to those of any maker, past or present, to appreciate their craftsmanship and to understand why Thomas & Thomas rods are regarded as the standard of excellence among fly rods. Each Classic requires over 30 hours of handwork to build from extra select, flamed bamboo. Their finely-tuned, medium-fast, dry fly action works clear down to the corks to give extremely good line speed with flat casting, line-loop characteristics resulting in excellent line control, and increased distance. Their accuracy and pleasing fishing style has never been disputed.

Classic Models

6'6"—#4 line—2-1/8 oz.—(A1)	7'6"—#5 line—3-1/4 oz.—(B3)
7'0"—#3 line—2-1/4 oz.—(A1)	7'6"—#6 line—3-5/8 oz.—(B3)
7'0"—#4 line—2-3/8 oz.—(A1)	8'0"—#5 line—3-3/4 oz.—(B3)
7'0"—#5 line—2-1/2 oz.—(A2)	8'0"—#6 line—4 oz.—(B3)
7'6"—#4 line—3 oz.—(A2)	8'6"—#7 line—4-1/2 oz.—(B3)

Price: (All models are two piece design) **T&T \$575.00**

THE HENDRICKSON

Casting a tight, smooth, line-loop; delivering the fly with tea-cup accuracy; being able to cast close-in as well as far-off; turning over the leader at all distances; presenting the fly with delicacy; protecting fine tippets; casting a full range of fly sizes . . . these are the traditional requirements of a truly fine, dry fly rod.

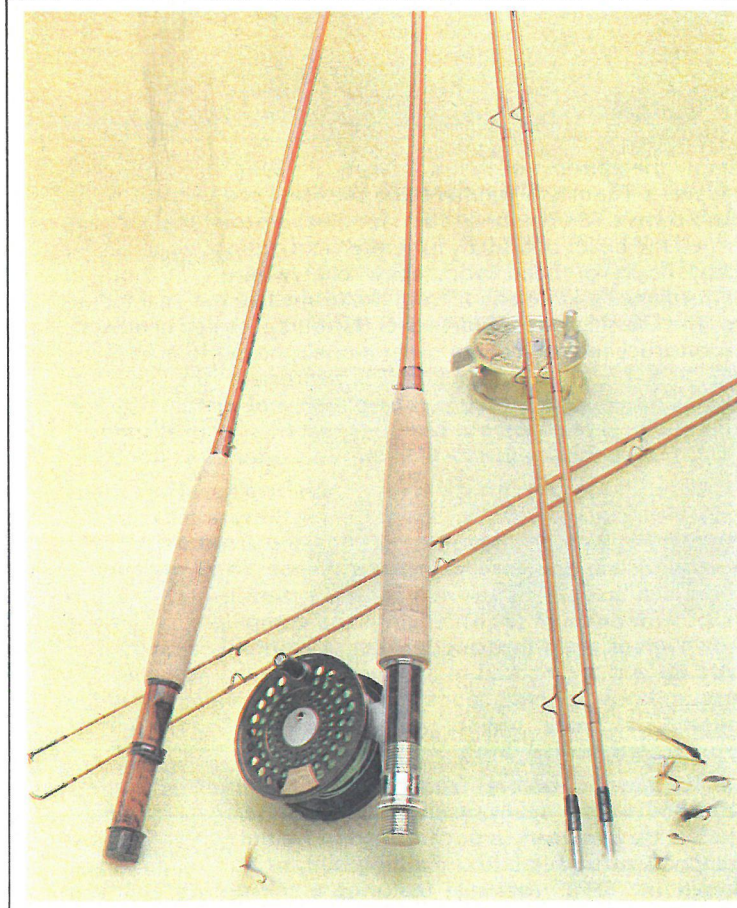
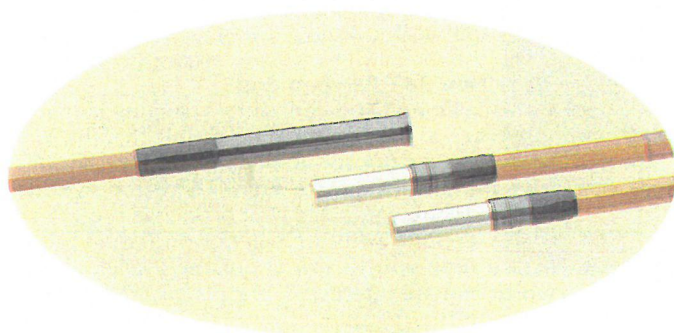
The Hendrickson rods represent the ultimate in a dry fly rod, for not only do they meet these traditional requirements, but they set a new standard of excellence in dry fly performance.

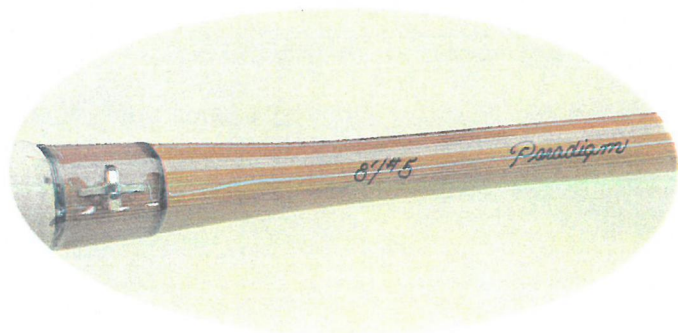
As the name implies, they are the perfect rod to meet the traditional mayfly and caddis hatches. The faster, progressive action of the Hendrickson is magic in the hand.

Hendrickson Model

6'6"—#3 line—1-3/4 oz.—(A1)	7'6"—#4 line—3 oz.—(A2)
7'0"—#3 line—2-1/8 oz.—(A1)	8'0"—#4 line—3-1/2 oz.—(A2)
7'6"—#3 line—2-1/2 oz.—(A2)	7'0"—#5 line—2-1/2 oz.—(A2)
8'0"—#3 line—3 oz.—(A2)	7'6"—#5 line—3-1/4 oz.—(B3)
6'6"—#4 line—2-1/8 oz.—(A1)	8'0"—#5 line—3-3/4 oz.—(B3)
7'0"—#4 line—2-3/8 oz.—(A1)	8'6"—#5 line—4 oz.—(B3)

Price: (All models are two piece design) **T&T \$750.00**





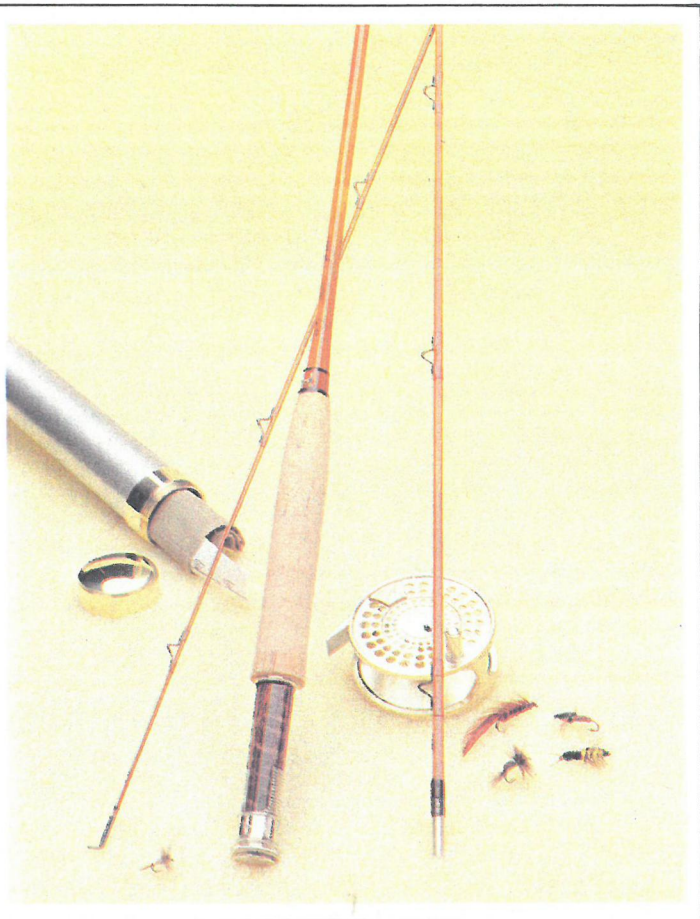
THE PARADIGM

Intended for the dry fly fisherman who has a more relaxed casting style and who seeks a rod with a smooth, silky action, but with hidden power. The Paradigm rods have been designed with the rare dual capacity to generate a tight line loop while loading fully . . . even in close. They are progressive actioned rods of remarkable finesse, possessing a hidden power reserve which is almost magical. They have made many a skeptic a "true believer" . . . and more than a few multi-rod users "one-rod" fishermen. The medium progressive action of the Paradigm is a delight for the slower paced caster.

Paradigm Models

7'0"—#4 line—2-1/4 oz.—(A1) 8'0"—#4 line—3-1/2 oz.—(A2)
 7'6"—#4 line—2-7/8 oz.—(A2) 8'0"—#5 line—3-5/8 oz.—(B3)
 7'6"—#5 line—3-1/8 oz.—(B3)

Price: (All models are two piece design) T&T \$750.00



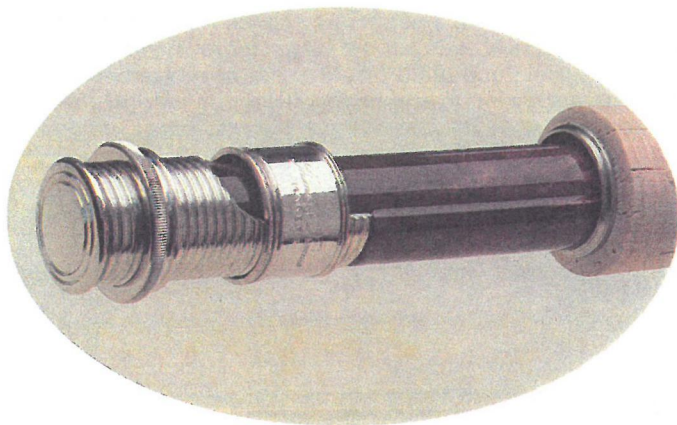
THE MONTANA

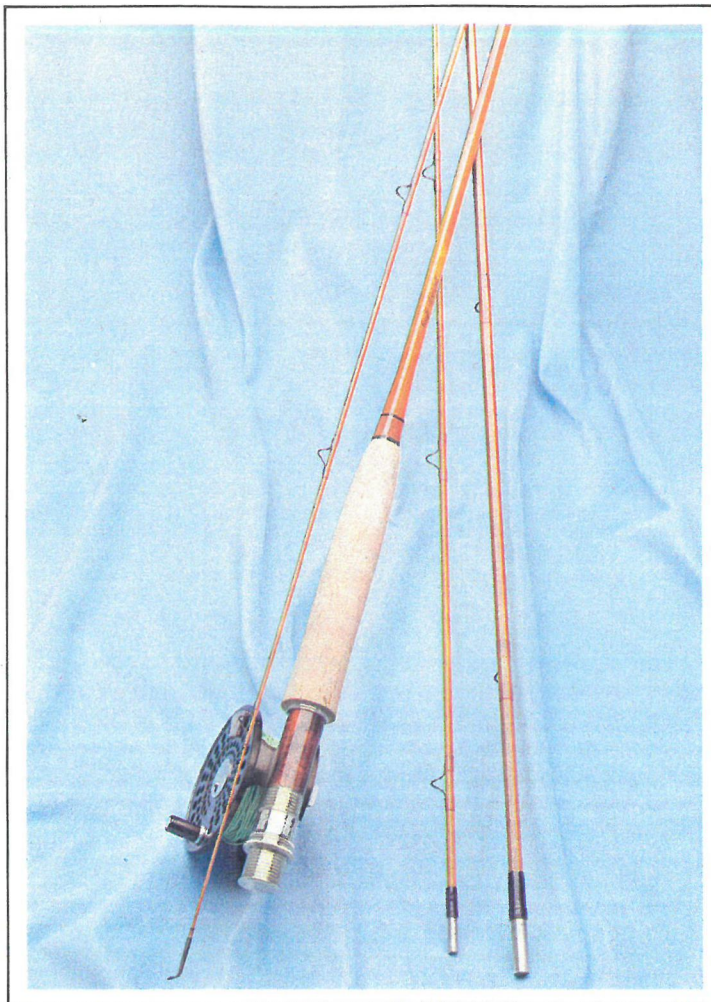
We have often remarked that if we were forced to own but one rod to do all our fishing for trout, bass and panfish, it would be a Montana. These rods can throw a long line under the worst of conditions but never cease to amaze the caster with their in-close fishability. The Montana has proved to be the first choice of many for both dry and sub-surface fishing using larger dries, wets, streamers and bugs. It is a moderately fast action rod which gives the distance when asked. This rod is the best choice for the one-rod fisherman.

Montana Models

7'6"—#6 line—3-3/4 oz.—(B3) 8'6"—#6 line—4-3/8 oz.—(B3)
 8'0"—#6 line—4 oz.—(B3) 8'6"—#7 line—4-5/8 oz.—(B3)
 8'0"—#7 line—4-1/8 oz.—(B3) 8'6"—#8 line—4-3/4 oz.—(B3)

Price: (All models are two piece design) T&T \$750.00





THE THREE PIECE RODS

Over the years, three piece rods have come to be regarded by some fishermen as the classic rod design. These anglers cherish the aesthetics of the the three piece rod. Others appreciate its practical portability. For these fishermen we are proud to offer this selection of three piece models. The grip/seat style on each of these rods is the same as used on the corresponding two piece model.

Three Piece Models

7'6"—#4 Paradigm—3½ oz.	8'0"—#6 Montana—4¼ oz.
7'6"—#5 Hendrickson—3½ oz.	8'6"—#7 Montana—4¾ oz.
8'0"—#5 Paradigm—3¾ oz.	8'6"—#8 Montana—5 oz.
8'0"—#5 Hendrickson—4 oz.	

Price: (all models) T&T \$800.00

THE SALMON SERIES

Designed for maximum lightness and power, these salmon rods are balanced for long and accurate casts with little effort. All are fitted to hold any of the best salmon reels, and come with (B4) or (B5) depending upon your choice of seats.

Salmon Models

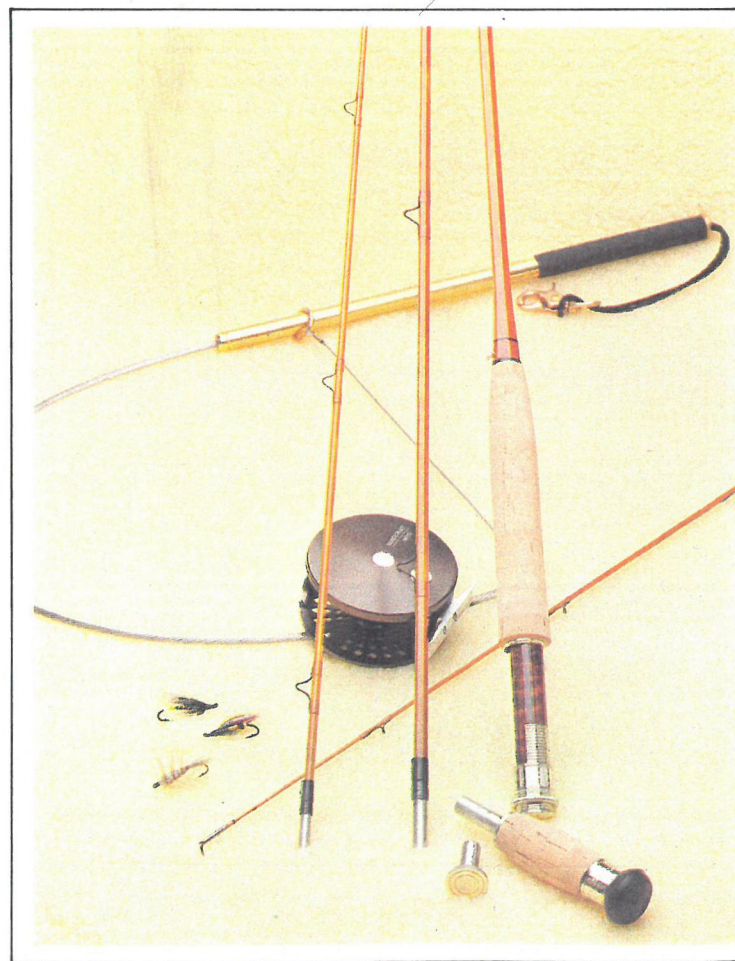
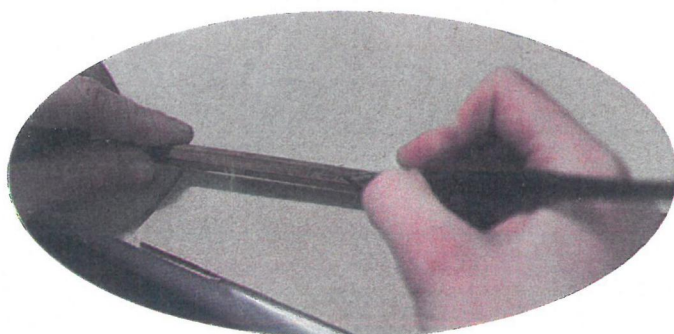
Two Piece

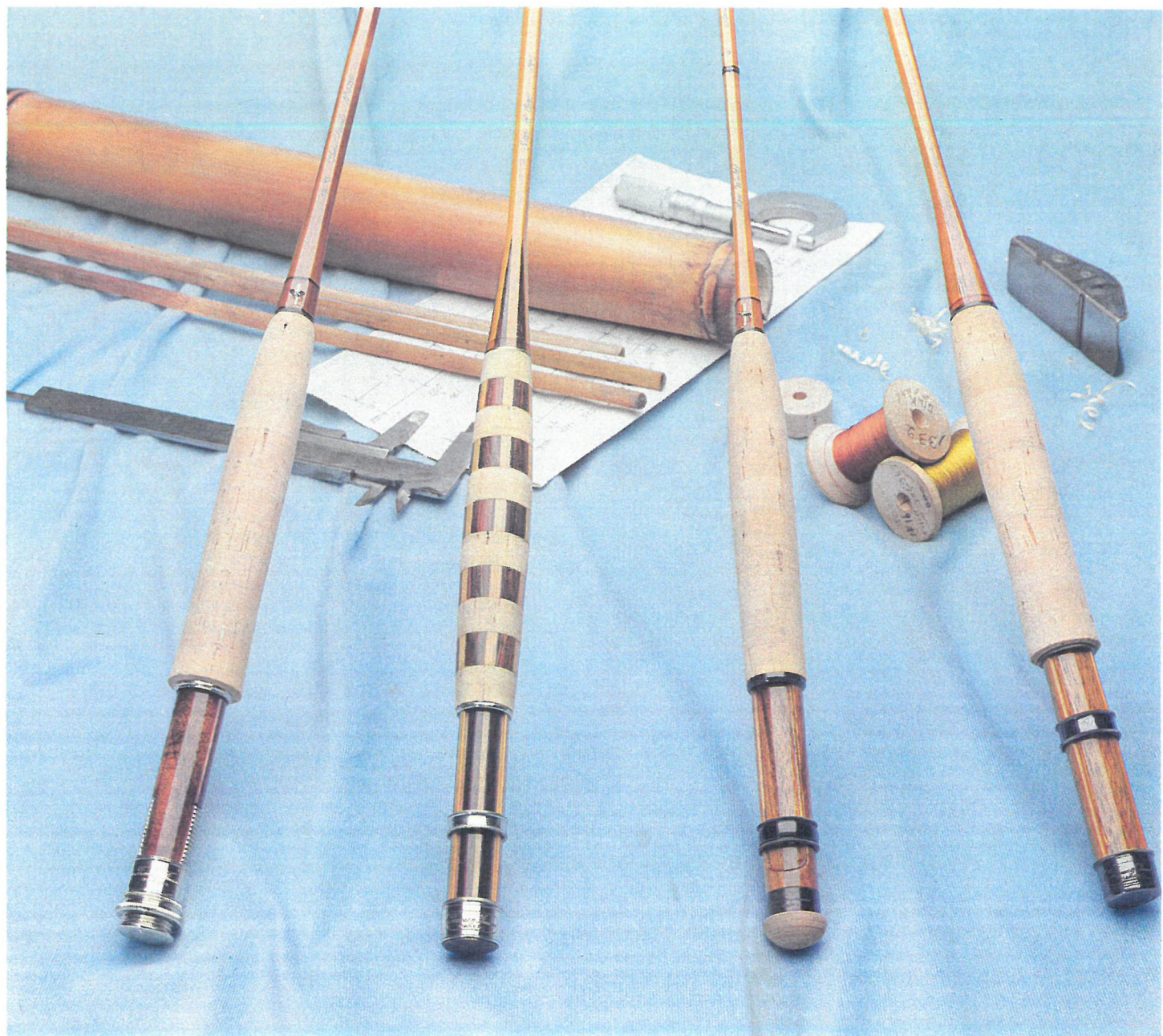
8'0"—#6 line—4½ oz.	8'6"—#7 line—4¾ oz.
8'0"—#7 line—4½ oz.	8'6"—#8 line—4¾ oz.

Three Piece

8'0"—#7 line—4½ oz.	9'0"—#8 line—5½ oz.
8'6"—#7 line—5 oz.	9'0"—#9 line—5¾ oz.
8'6"—#8 line—5½ oz.	

Price: (all models) T&T \$850.00





SANS PAREIL—CUSTOM RODS

Although the words “custom” and “customized” are often loosely interchanged, the requirements of a truly custom rod may far exceed mere cosmetic customization. Thomas & Thomas is unrivaled in the hand crafting of custom fly rods, so we take the word “custom” quite seriously. To us, a custom rod is always the result of an exchange of ideas between rod maker and prospective owner. So, if you are seeking a one piece rod, a rod of unusual length, a rod with a special action or to fill a special need, please contact us for a quotation. The Sans Pareil rods are keyed to the exacting demands of the most critical fly fisher or collector of fine rods. They are one of a kind and built to order from scratch. They are unique in every respect.

SANS PAREIL TWO PIECE AND THREE PIECE RODS

Special built to the specifications dictated by your needs. Built with ferrules for traditional portability. Custom built to your length, line, action and cosmetic requirements.

Custom Two Piece Rods By Quote Only
Custom Three Piece Rods By Quote Only

SANS PAREIL ONE PIECE RODS

The purest, most perfect (and rarest) fly rods are those constructed in a single piece design. They are also the most difficult to make, however, and this difficulty increases with the length of the rod. For the collector, or the hard to please individual who puts perfection before portability, these exceptional rods are constructed in a unified taper design in a single piece, without ferrule interruption. We continue to be the only rodmakers in the world to build one piece rods. We are listing only lengths in which these rods are made as the actions, weights, fittings, wraps, etc. will vary with your requirements.

Custom One Piece Trout Rods

6'0" 6'6" 7'0" 7'6" 8'0" By Quote Only

Custom One Piece Salmon Rods

8'6" 9'0" 9'6" 10'0" By Quote Only

LIMITED EDITION RODS

From time to time Thomas & Thomas offers a limited edition of “Heritage” rods. These are unique collectors rods, and when available, will be announced in our newsletter.



Thomas & Thomas presents the "Sans Noeud" Rod a Heritage Limited Edition



In the history of the development of the split bamboo fly rod, there are certain outstanding innovations which stand above the many technical advances which led to the present state-of-the-art in bamboo fly rod construction. These most profound innovations reflect a special historical significance, for they relate to the structural essence of fly rod construction. A list of such outstanding innovations would likely include Hiram Leonard's work in the 1870's with the waterproof ferrule, Thomas Chubb's development of the seamless metal reel seat in the 1880's, Wes Jordan's work with impregnation of bamboo in the 1940's, and especially the original development of six strip rod construction by Samuel Phillippe prior to 1859.

When we conceived of our Heritage Limited Editions in 1979, our intention was to offer each year, a very small edition of historically significant "collectable" rods. These were not merely to be ordinary rods fitted with special cosmetics, "gold" hardware, special serial numbers or engraving as it so often encountered with other so-called limited-edition rods. **Instead, each of our Heritage Limited Editions would embody a unique and unusual structural design feature—some design concept so different or difficult that it would create intrinsic value and rarity.** To further insure this rarity, we decided that the number of rods in such an edition should be severely limited. When one considers that the number of rods in "limited editions" of other makers usually brackets our total annual production, it becomes clear that for us, a "limited edition" is by necessity quite small.

Our first Heritage Limited Edition was offered in 1979. It was an edition of ten rods of a Spliced-Swelled Butt design commemorating our ten years of rodmaking . . . appropriately called the "10th Anniversary Rod." These ten rods were all eight footers in two piece design for a #5 line and involved a very complex and difficult to build Spliced-Swelled Butt Construction (where six strips of bamboo merge with six of walnut forming a unified swell/grip/reel seat).^{*} These all are now in private collections. One of these was issued to Thomas & Thomas for our own collection. To date, these rods have doubled in value over their original cost.

In 1980, demands on our rod building time would not permit the issuance of another series of Limited Edition rods to private collectors. However, we did manage not to overlook the Thomas & Thomas collection! A very special "One of One" rod was constructed, employing an even more difficult to build Spliced-Swelled Butt section and grip/seat arrangement. The result was an eight foot for #5 two piece rod with a thoroughly unique structural treatment of the swell/grip/seat.^{**} Thus, the 1980 Limited Edition was limited to a collection of one rod only, which remains in our possession and was never issued for sale. Our intention is to keep this rod in our collection as an historical example of our work.

^{*}See pg. 41, 1st on right in photo.

^{**}See pg. 41, center rod in photo.

The "Sans Noeud" Limited Edition . . . We present our 1981 Heritage Limited Edition with even greater excitement, for it involves one of the most difficult and challenging construction techniques ever attempted in the history of rod making.

The nodes have always been regarded as the weakest part of the bamboo, and so the best method of positioning or staggering of nodes has always been a point of debate among rodmakers. To date, this debate remains unresolved, although consensus seems to be at least that nodes are a necessary evil in a bamboo rod. Evil? . . . perhaps. Necessary? . . . definitely not!

This year's Heritage edition is a series of 20 rods from which **all the nodes have been removed!** Our edition will be appropriately titled "**Sans Noeud**" . . . from the French expression for "without nodes".

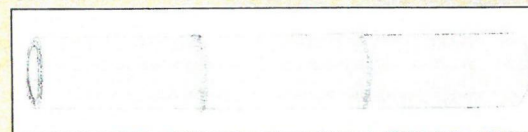
When you reflect and consider that in over 100 years of rod building history, the only two known attempts at nodeless rod construction were undertaken by Robert Crompton in 1898 and Everett Garrison in the 1960's, and that each of these men constructed only **one known rod**, you begin to realize the complexity of the task. A certain appreciation of the nature of the challenge begins to take hold. Frankly, the idea is somewhat preposterous and the execution is outrageous, but then that is what makes the **Sans Noeud** special and worth \$2,500.00 a copy . . . going in.

The technique we have employed for removing the nodes in these **Sans Noeud** rods has, to our knowledge, never been attempted before. It is, therefore, an historical "first." Rather than a simple cut-and-butt procedure, we have scarfed away the node-adjointing area of each strip to form a long diagonal splice. This diagonal splice, when glued up provides a scarf joint which approaches a line parallel to the six conventional glue line found in a bamboo rod. The degree of strength made possible by such an arrangement is obvious, and the amount of work involved is simply overwhelming. The number of hand scarfing and gluing operations required for **just one rod tip** is approximately thirty. Triple this, and you get an idea of the number of operations required for each rod, **over and above** the amount of hand work involved in any standard Thomas & Thomas rod! An ordinary T&T requires about 45 hours to build. **The time required to build each Sans Noeud rod exceeds 120 hours!**

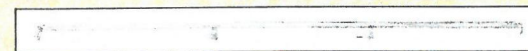
We have employed alternating medium and dark flamed bamboo sections in our construction in order to enhance the trapezoidal geometry of our design. The visual impact of this treatment takes the beauty of flame finished bamboo to its optimum.

If we were to have titled our 1981 Limited Edition anything other than **Sans Noeud** it might have been this challenge to future generations . . . **Jamals Encore!** (Never again!)

CONSTRUCTION DETAILS



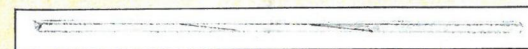
Unsplit culm of bamboo showing nodes.



Split section of bamboo. Normally nodes are filed flush and allowed to remain.



Split section with nodes cut out and sections scarfed to a long angle, ready for lamination.



Scarfed sections laminated and resulting piece beveled and tapered.



Six sections laminated to form rod blank.

"SANS NOEUD" SPECIFICATIONS

Length: Seven feet-six inches

Line: Double taper #5

Design: Two piece with extra tip; Nodeless construction.

Finish: High gloss varnish over flame finished bamboo.

Action: Progressive medium dry fly action.

Reel Seat: Sculptured nickel silver metal work mated to individually selected AAA fancy burl walnut spacer in a unique T&T morticed uplocking reel seat design.

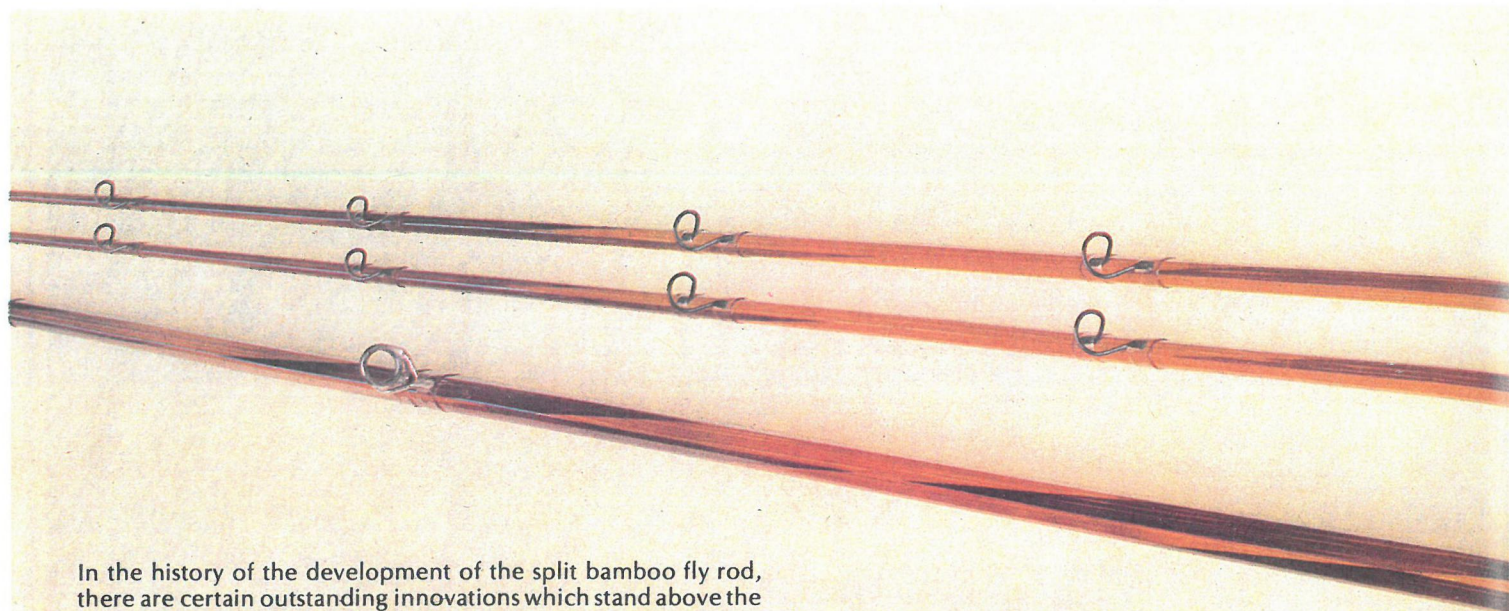
Special Touches:

- Sculptured nickel silver ferrule plugs.
- "**Sans Noeud**" engraved on reel seat band.
- Each "**Sans Noeud**" rod individually serial numbered.
- Each "**Sans Noeud**" rod is finished out with a signature wr unique to that rod so no two rods in the edition are qu alike.
- Presentation grade black perma-finished aluminum rod c with engraved brass hardware.
- Protective, handmade cloth sack.
- Personalization of the rod case an available option, if desir

Price: \$2,500 per rod. A \$500 non-refundable deposit is requir to confirm your order.

Availability Date: Late March, 1982.

The Offering: This offer is made on an "as come" basis. A f color photo print of the rod is available at the cost of \$10.00 ea deductable from the purchase price of the rod. Please cont Len Codella if you require futher information.



In the history of the development of the split bamboo fly rod, there are certain outstanding innovations which stand above the many technical advances which led to the present state-of-the-art in bamboo fly rod construction. These most profound innovations reflect a special historical significance, for they relate to the structural essence of fly rod construction. A list of such outstanding innovations would likely include Hiram Leonard's work in the 1870's with the waterproof ferrule, Thomas Chubb's development of the seamless metal reel seat in the 1880's, Wes Jordon's work with impregnation of bamboo in the 1940's, and especially the original development of six strip rod construction by Samuel Phillippe prior to 1859.

When we conceived of our Heritage Limited Editions in 1979, our intention was to offer each year, a very small edition of historically significant "collectable" rods. These were not merely to be ordinary rods fitted with special cosmetics, "gold" hardware, special serial numbers or engraving as it so often encountered with other so-called limited-edition rods. **Instead, each of our Heritage Limited Editions would embody a unique and unusual structural design feature—some design concept so different or difficult that it would create intrinsic value and rarity.** To further insure this rarity, we decided that the number of rods in such an edition should be severely limited. When one considers that the number of rods in "limited editions" of other makers usually brackets our **total** annual production, it becomes clear that for us, a "limited edition" is by necessity quite small.

Our first Heritage Limited Edition was offered in 1979. It was an edition of ten rods of a Spliced-Swelled Butt design commemorating our ten years of rodmaking . . . appropriately called the "10th Anniversary Rod." These ten rods were all eight footers in two piece design for a #5 line and involved a very complex and difficult to build Spliced-Swelled Butt Construction (where six strips of bamboo merge with six of walnut forming a unified swell/grip/reel seat).^{*} These all are now in private collections. One of these was issued to Thomas & Thomas for our own collection. To date, these rods have doubled in value over their original cost.

In 1980, demands on our rod building time would not permit the issuance of another series of Limited Edition rods to private collectors. However, we did manage not to overlook the Thomas & Thomas collection! A very special "One of One" rod was constructed, employing an even more difficult to build Spliced-Swelled Butt section and grip/seat arrangement. The result was an eight foot for #5 two piece rod with a thoroughly unique structural treatment of the swell/grip/seat.^{**} Thus, the 1980 Limited Edition was limited to a collection of one rod only, which remains in our possession and was never issued for sale. Our intention is to keep this rod in our collection as an historical example of our work.

^{*}See pg. 41, 1st on right in photo.

^{**}See pg. 41, center rod in photo.

The "Sans Noeud" Limited Edition . . . We present our 1981 Heritage Limited Edition with even greater excitement, for it involves one of the most difficult and challenging construction techniques ever attempted in the history of rod making.

The nodes have always been regarded as the weakest part of the bamboo, and so the best method of positioning or staggering of nodes has always been a point of debate among rodmakers. To date, this debate remains unresolved, although consensus seems to be at least that nodes are a necessary evil in a bamboo rod. Evil? . . . perhaps. Necessary? . . . definitely not!

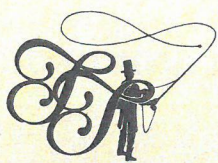
This year's Heritage edition is a series of 20 rods from which **all the nodes have been removed!** Our edition will be appropriately titled "**Sans Noeud**" . . . from the French expression for "without nodes".

When you reflect and consider that in over 100 years of rod building history, the only two known attempts at nodeless rod construction were undertaken by Robert Crompton in 1898 and Everett Garrison in the 1960's, and that each of these men constructed only **one known rod**, you begin to realize the complexity of the task. A certain appreciation of the nature of the challenge begins to take hold. Frankly, the idea is somewhat preposterous and the execution is outrageous, but then that is what makes the **Sans Noeud** special and worth \$2,500.00 a copy . . . going in.

The technique we have employed for removing the nodes in these **Sans Noeud** rods has, to our knowledge, never been attempted before. It is, therefore, an historical "first." Rather than a simple cut-and-butt procedure, we have scarfed away the node-adjointing area of each strip to form a long diagonal splice. This diagonal splice, when glued up provides a scarf joint which approaches a line parallel to the six conventional glue line found in a bamboo rod. The degree of strength made possible by such an arrangement is obvious, and the amount of work involved is simply overwhelming. The number of hand scarfing and gluing operations required for **just one rod tip** is approximately thirty. Triple this, and you get an idea of the number of operations required for each rod, **over and above** the amount of hand work involved in any standard Thomas & Thomas rod! An ordinary T&T requires about 45 hours to build. **The time required to build each Sans Noeud rod exceeds 120 hours!**

We have employed alternating medium and dark flamed bamboo sections in our construction in order to enhance the trapezoidal geometry of our design. The visual impact of this treatment takes the beauty of flame finished bamboo to its optimum.

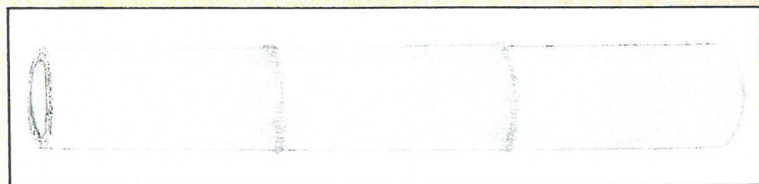
If we were to have titled our 1981 Limited Edition anything other than **Sans Noeud** it might have been this challenge to future generations . . . **Jamais Encore!** (Never again!)



Thomas & Thomas presents the "Sans Noeud" Rod a Heritage Limited Edition



CONSTRUCTION DETAILS



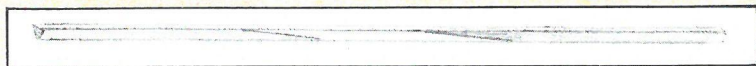
Unsplit culm of bamboo showing nodes.



Split section of bamboo. Normally nodes are filed flush and allowed to remain.



Split section with nodes cut out and sections scarfed to a long angle, ready for lamination.



Scarfed sections laminated and resulting piece beveled and tapered.



Six sections laminated to form rod blank.

"SANS NOEUD" SPECIFICATIONS

Length: Seven feet-six inches

Line: Double taper #5

Design: Two piece with extra tip; Nodeless construction.

Finish: High gloss varnish over flame finished bamboo.

Action: Progressive medium dry fly action.

Reel Seat: Sculptured nickle silver metal work mated to an individually selected AAA fancy burl walnut spacer in the unique T&T morticed unplocking reel seat design.

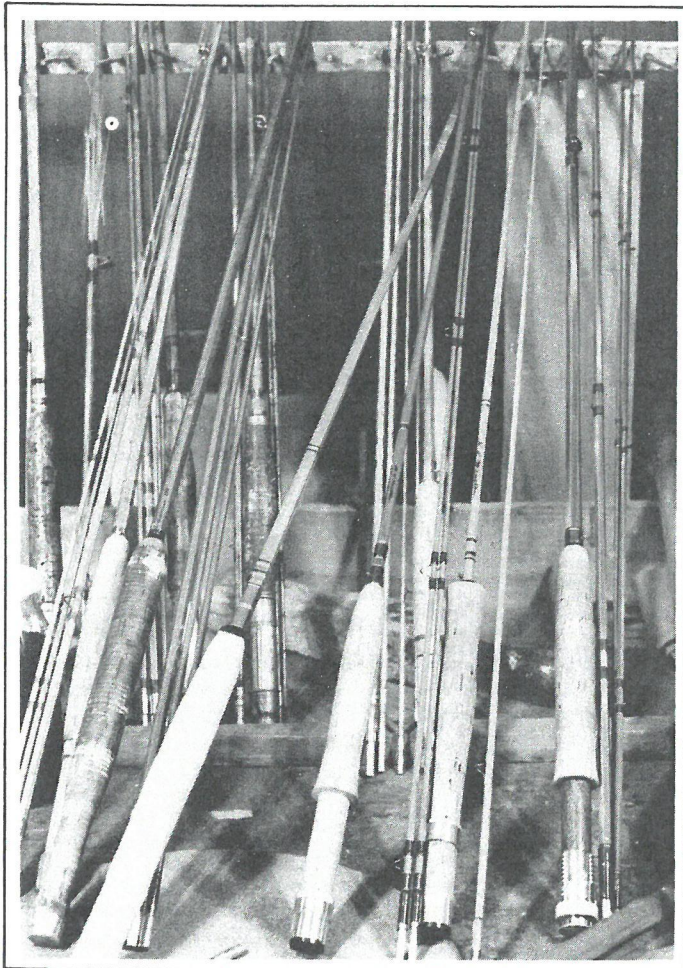
Special Touches:

- Sculptured nickle silver ferrule plugs.
- "Sans Noeud" engraved on reel seat band.
- Each "Sans Noeud" rod individually serial numbered.
- Each "Sans Noeud" rod is finished out with a signature wrap unique to that rod so no two rods in the edition are quite alike.
- Presentation grade black perma-finished aluminum rod case with engraved brass hardware.
- Protective, handmade cloth sack.
- Personalization of the rod case an available option, if desired.

Price: \$2,500 per rod. A \$500 non-refundable deposit is required to confirm your order.

Availability Date: Late March, 1982.

The Offering: This offer is made on an "as come" basis. A full color photo print of the rod is available at the cost of \$10.00 each, deductible from the purchase price of the rod. Please contact Len Codella if you require further information.



CLASSIC RODS AND TACKLE

Back in 1969, we pioneered the concept of offering used tackle for sale through our new famous "rod list". We were amongst the first to bring to clear light the inherent value found in fine cane rods and to point out their collectability to the fly fisherman. We are proud to have helped fashion this ever growing, most fascinating aspect of the sport. Our experience, combined with our daily work in the restoration of the finest Classic rods, gives T&T a dimension of historical expertise which few can match. The T&T "rod list" is published several times per year, and lists for sale or trade a substantial inventory of previously owned bamboo and graphite rods ranging from "handyman specials" or contemporary fishing tools, to rare and exotic Classics. This list offers as well, a selection of used reels and other miscellaneous equipment suited to the needs of the fly angler and collector.

Consistent with this long established practice of offering used tackle for sale, T&T is interested in acquiring used cane rods or reels. We will accept these in trade or purchase them outright, and we will also accept rods, reels and tackle for sale on a consignment basis. Of special interest are fine trout rods by Dickerson, Payne, Gillum, Hawes, Edwards, Halstead, Thomas, Young, Winston, (E.C.) Powell, Leonard, Orvis, Garrison and others. Also wanted are antique, historic and contemporary reels and related angling memorabilia.

If you have equipment, old or new, that you wish to trade or sell, please let us know. You will find our prices to be very fair. We do formal appraisals for insurance or estate settlement purposes. We are one of the largest dealers in used tackle in the world, and our reputation for fair and honest dealings is world renowned.

ROD RESTORATION AND REPAIR

Our reputation as custom rod makers seems to fit hand-in-glove with our capability as restorers of the finest rods. Because of our experience in building from scratch, we are often called upon to build butt or tip sections which duplicate the tapers and cosmetics of the original rod, including ferrules, grips and other hardware where these need replacement. Since this work is most often performed on fine Classic rods, attention to finishing detail is also of paramount importance. None of the finer points of the original makers' techniques (including special wraps, wrap colors, metal treatment, etc.) escapes our attention. Our restoration work is done with the utmost regard for the originality of the piece and for the methods and techniques employed by the original maker so that the inherent value of the rod is preserved or even enhanced. Each restoration job we undertake also enjoys the benefit of our unrivaled varnish work, which often exceeds that of the original maker's finish.

Many fine and servicable bamboo rods, though of lesser significance to the collector, are quite worthy of reclamation. So, if you own a bamboo rod which is showing the toll of seasons past or is in need of any major or minor repair, please send us your rod. Please include inspection charge. Quotations on repair costs can only be given after inspection of the work.

Inspection Charge (Per Rod) Covers inspection, return postage and insurance (Will be applied to repair charges if work is performed) (per rod) \$5

To give some ballpark costs of repairs, we are listing the normal cost ranges for some of the most commonly performed work on many bamboo rods. These prices include all finish work.

Complete Refinish	\$100 to \$250
Replacement ferrules	\$12 to \$20 ea. (male or female)
Reglue or repair splits, breaks	\$10 to \$75 per sect.
Replacement tips	\$75 to \$200 each
Replacement butts	\$100 to \$300 each
Straighten rod sections	\$10 to \$30 each
Replace individual guides	\$7 to \$10 each
Replace reel seats	\$15 to \$75
Replace grips	\$10 to \$50

