

*More
Fishing*

*Less
Fussing*

PAUL H. YOUNG CO.

**1956 CATALOG OF
FINE FISHING TACKLE**

**17701 W. 8 Mile Road
Detroit 35, Michigan
PHONE: KENWOOD 5-7191**

THE NEW LOOK

The outside covers depict a drawing of our new home giving us more operating room and display space, and equally important, a spacious parking lot. After watching Grand River traffic grow heavier for 30 years our new move to the outskirts of town is indeed a welcome breather. For years we have catered mostly to the wading fisherman, but now we can offer his counterpart, the boat fisherman, complete quality outfits, including boats, trailers, marine hardware, Evinrude motors and outdoor paraphernalia in general. We intend to make our new building more than just a tackle store and rod shop—our ambition is to make it a fishing institution—dedicated to help fishermen achieve more enjoyment from their sport. Along these lines we will sponsor fly tying classes, fly and plug casting demonstrations, and periodical salmon and other fishing movies will be shown to interested groups. We will maintain a casting lawn where prospective customers may try out rods properly balanced and feel what action best suits them. If desired we will attempt to iron out a n y wrinkles in their casting technique, or with their permission, rectify improperly balanced outfits of their own. Another service is our bulletin board of current fishing information on our main trout streams, showing weather and stream conditions, and the nature and species of fly hatches occurring or absence thereof. Actual samples of the best producers will be on display, be they dry or wet (even if its garden hackle we shall strive for authenticity and find one somewhere). The accuracy of these reports will depend on the cooperation we receive from returning fishermen in addition to regular briefs from several famous river guides. In short—to the best of our ability we will endeavor to be a veritable information center for fishermen's problems, if we can help you in any way we will be glad to do so. Although these innovations primarily benefit our local patrons, if any of our out State customers and friends have occasion to come to or through Detroit, we will be delighted to have you stop in and say hello, browse around and chat piscatorially. For your convenience in finding us, a map showing our location can be found on the inside of the back cover.

CHOOSING A FLY ROD

Much has been written under this heading in popular outdoor magazines; some of the articles have proved beneficial but for the most part quite contradictory. Fly fishermen are individuals, having whims and fancies of their own, not a stereotyped group whose rod requirements are readily solved by offering them a choice of two types of rods; one a limber one labeled "Trout Action" and the other a stiff one labeled "Bass Action."

We believe the hardy soul who doggedly pursues his sport in sleet and storm, or midst clouds of sanguinary mosquitoes and black flies deserves the right to entertain his whims by having a larger field to choose from to find a rod that will fit his individual requirements. Whether it be a powerful brute to turn big Browns away from log jams or a 2 oz. wand to provide a circus on a local Bluegill lake, we endeavor to furnish each individual with the most efficient rod for *his* purpose, he is the judge of which manner of fishing constitutes sport to him.

Conditions under which most of your fishing is done should determine the tackle best suited for you, provided you can cast it easily. The list of rods on the following page is primarily to give a rough idea of the sizes and uses of our principal fly rods, each rod being described in detail further on in order as listed. It is our hope that the descriptions under each rod will help you determine which rod or rods would be most appropriate for your particular favorite stretch of stream or type of water.

Although each rod is different from the others to some degree and designed for a particular use, there is naturally an overlapping, i.e. several rods will prescribe the same functions depending on the conditions under which they are used.

We build any conceivable type of action on specific order but have found that in almost all cases one of these rods will fit the most exacting fisherman's needs.

If your fishing dictates a rod of a design not listed here, we invite correspondence to discuss your problem and will do our utmost to fit you with a rod to best fill your needs.

It doesn't take a dozen rods to cover the fly fishing field, but neither can one rod delicately present a small dry fly and efficiently drive big bass bugs. The final analysis of what is required to properly "cover the field" depends on each individual's particular set of conditions, i.e. type and size of fish expected, type of water, cover, condition of lake or stream, wading or floating, physical stature and prowess, etc. Every craftsman or mechanic knows the frustration experienced by not having the proper wrench or tool for the job at hand, analogous to trying to fish a Midge hatch with a bass bug rod. The feeling of exaltation derived from the knowledge that you are using an outfit designed for the type of water you are working can make fishing and casting enjoyable even when the fish are uncooperative.

2 PIECE FLY RODS

No.	Name	Length	Fer.	Tip	* Fin Wt.	Page
1.	Midge	6'3	12	4	1 $\frac{3}{4}$ oz.	15
2.	Driggs River	7'2	13	4 $\frac{1}{2}$	2 $\frac{7}{8}$ oz.	16
3.	Perfectionist	7 $\frac{1}{2}$ '	1 $\frac{1}{2}$ ₁₃	4	2 $\frac{2}{3}$ oz.	17
4.	Martha Marie	7 $\frac{1}{2}$ '	14	4 $\frac{1}{2}$	3 $\frac{1}{3}$ oz.	18
5.	Standard Dry	8'	14	4 $\frac{1}{2}$	3 $\frac{3}{4}$ oz.	19
6.	Parabolic 15	8'	15	5	3 $\frac{3}{4}$ oz.	20
7.	Boat Rod	8'	16 $\frac{1}{5}$	5 $\frac{1}{2}$	4 $\frac{1}{4}$ oz.	21
8.	Texan	8 $\frac{1}{2}$ '	15	5	4 $\frac{1}{4}$ oz.	22
9.	Parabolic 16	8 $\frac{1}{2}$ '	16	5	4 $\frac{1}{2}$ oz.	23
10.	Texas General	8 $\frac{1}{2}$ '	16	6	5 oz.	24
11.	Parabolic 17	8 $\frac{1}{2}$ '	17	6	5 oz.	25
12.	Nymph Special	9'	16	5	4 $\frac{1}{3}$ oz.	26
13.	Bobby Doerr	9'	17	6	6 oz.	27
14.	Florida Special	9'	18	7	6 $\frac{1}{4}$ oz.	28
15.	Powerhouse	9 $\frac{1}{2}$ '	19	7	7 $\frac{1}{4}$ oz.	29

SPINNING RODS

1.	J. C. Salyer	6'4	14	5	3 $\frac{1}{8}$ oz.	32
2.	Barney Fisher	6'4	15	6	3 $\frac{1}{2}$ oz.	32
3.	Lightweight	7'2	13	7	3 $\frac{3}{4}$ oz.	33
4.	Standard	7 $\frac{1}{2}$ '	14	8	4 $\frac{1}{3}$ oz.	33
5.	West's Pet	8'	15	9	4 $\frac{2}{3}$ oz.	34
6.	Salt Water 16	7 $\frac{1}{2}$ '	16	9	5 oz.	34
7.	Salt Water 17	7 $\frac{1}{2}$ '	17	9	5 $\frac{1}{2}$ oz.	34
8.	Tarpon Tackler	9 $\frac{1}{2}$ '	27	12	12 oz.	35

*Weights vary with type of reel seat. The listed weights are given with the type we normally install on a given rod, unless a different type is desired.

Ferrules and tip top sizes given in 64ths inch.

HOW THE FINEST RODS ARE MADE

Photo 1 shows the dense thick-walled butts from which all rods we turn out, even the little ones, are made. Less than half the wall thickness is required to make even our big rods, such as our powerful bonefish, steelhead and salmon rods.

(1)

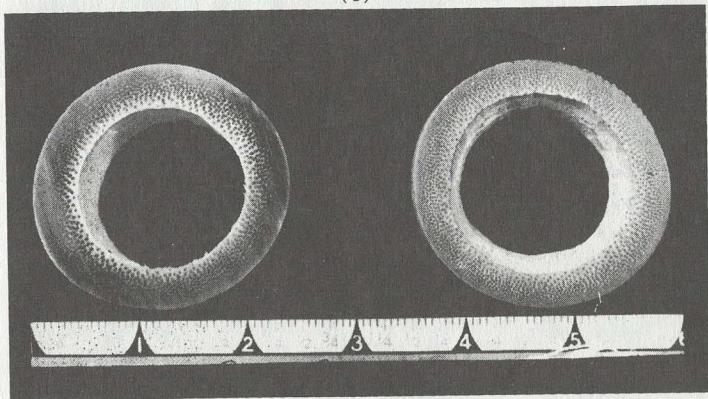


Photo 2 shows butt end of one of our average culms, six strips before mitering, six strips mitered to a 60° angle, and the six strips glued. The glued up section consists of densest power-fibers, not possible to be had from average rod cane. In selecting cane to work, we take a wafer cut off each end with a high speed metal cutting saw, to allow inspection of fiber structure, and discard all culms that will not meet our exacting standards.

We are building every rod with the same zealous care that we would if it were going out to compete against all the world's rods.

(2)

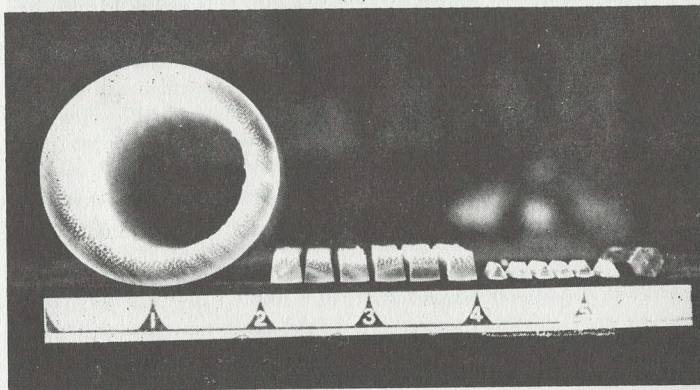


Photo 3 shows ends of six strips before mitering. These are for the tip section of a 9½' bone-fish rod. On the left is big end at the ferrule station, on the right is tip end at the tip top. All of the pithy or soft center is milled away in the mitering process.

This extreme in density is what gives our rods the stamina to allow one rod to take over 80 bonefish, and many other larger fish, and still remain perfectly straight, as powerful as when first used.

In case the reader entertains the idea that in view of the above our rods cannot be set, he is wrong. Any rod, whether made of bamboo, glass or steel can be set if abused. Two most common abuses are trolling some heavy or resistant lure or rig over a period of time or hanging the rod crooked on a rack or nails while assembled.

The critical selection of cane, the precision with which it is worked, the perfection of glueing and equally important, the design of each model for a specific use, are what produces rods that amaze rod users and bring us letters of commendation.

(3)

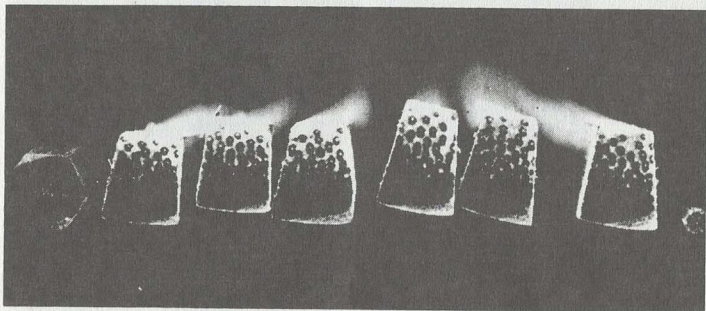
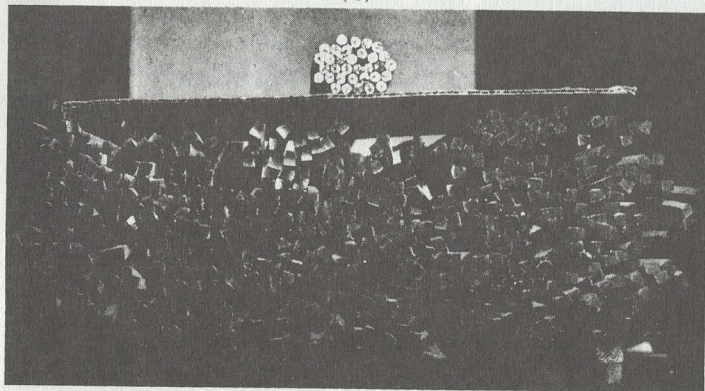


Photo 4 shows a tray of strips before and after the milling and glueing. Note the huge proportion of cutaway in order to utilize only the very densest, most powerful portion of each strip. This shows the big, or ferrule end of two-piece 9' tips. Note that it takes six of the big strips to make one of the sections on top.

(4)



GLUING

Our bonding of segments: In the first place, there is an absolute conformity of the mitered angles. The six splines fit minus or plus zero, the wrapping apparatus applies tremendous pressure and forces out all glue that has not penetrated. We constantly keep cut-offs soaking in a jar of water for test purposes. We invite any interested person to take these glued up pieces, give him a hammer and an anvil, have him pound the section until the cane ruptures. Photo 5 shows the result. Invariably, soaked for weeks or not, the pounding will fracture the material, but never the bond. Boiling water, likewise, will not change this result.

(5)

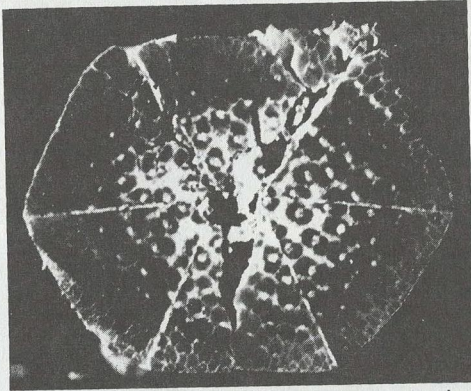
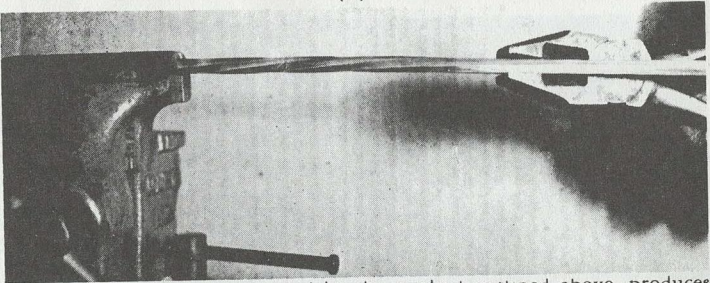


Photo 6 shows a spinning rod butt section, twisted one complete turn in 5 inches. This is the most severe test we could think up. This specimen shows absolutely no failure of glue seams under a powerful glass. Two panels of cane split just a trifle on opposite sides, but the section returned to its original straight condition, and would still do a very good job if put into a rod. This is on display in our shop.

(6)



Our quality of cane treated by the method outlined above, produces a more set resistant rod, per size of cross section, than is had by any other means. Speed and action are results of design and taper.

Our rods will deliver more casting power per weight than any rod not made by the same methods. They will retain their speed, power, stay straight, stand strains, and show no "softening" under years of hard service.

FERRULES

(7)

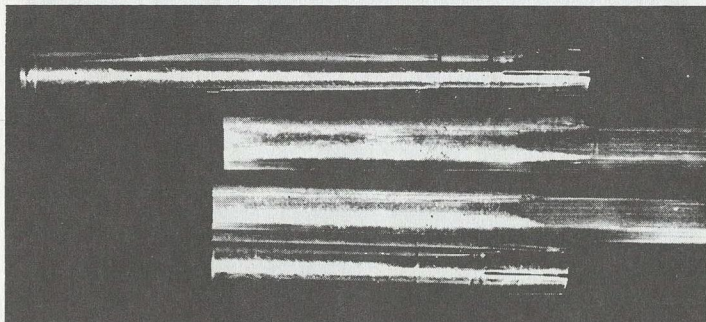


Photo 7 shows the sections with the corners removed, cut on a lathe between centers, emphasizing the serrations' extension and coverage up onto the hex of the section. These are cut to a push fit. Both surfaces, the inside of the ferrules, and the outside of the bamboo, are coated with a special latex compound, made first for war goods, particularly for bonding stainless steel sheet to marine plywood. This bond always remains flexible and does not crystalize as do resinous ferrule cements. We install the ferrule with the cane cold and the metal heated to a degree which melts the bonding agent and upon cooling the bond is permanent. We avail ourselves of the small amount of contraction occurring as the metal cools. A 16/64 ferrule set in this manner on a butt section held 660 lbs. without showing a sign of moving.

The serrations, properly wrapped, are distinct shock absorbers, easing off the abrupt strain area, as where a section enters a plain, non-serrated ferrule.

Ferrules are a necessary evil in a rod. We have long used and recommended two piece rods for this reason. We can't possibly get the same power and action from a three piece flyrod, with exactly the same measurements, that we do from a two piece rod.

PROTECTIVE COATING

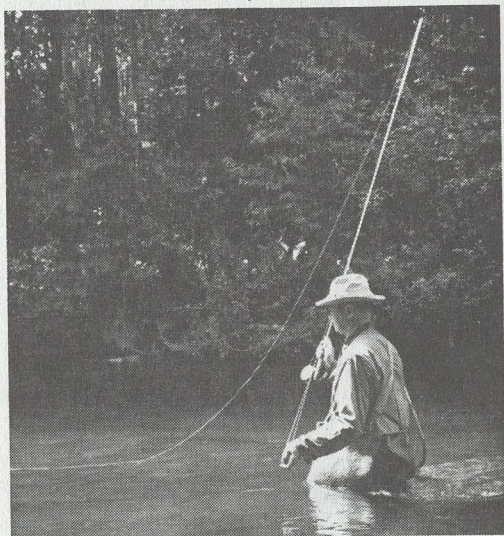
Our coating is 100% bakalite gum, cut to a fast running consistency with Zylol, a highly volatile carrier. We dip our wrapped sections bodily into this dissolved bakalite solution, get all the penetration desired, and do not spoil the sweet action, slow up the recovery powers, make our cane loggy, or bind the fibers together with a deadening effect that prevents free flexation. Our protection is complete.

Experimental rods that were used in salt water without washing for three years were cleaned up and look new. They have lost none of their casting power, are straight, have no loose ferrules, and are fulfilling their intended purpose.

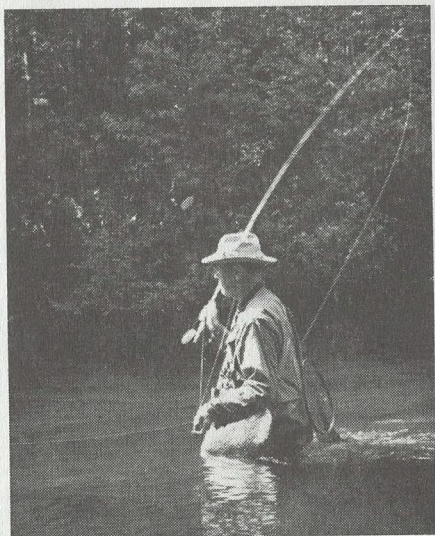
We have a customer who lost one of our rods overboard in a northern lake, late on a Sunday evening. He dredged the rod out a week later, went ashore, dried and dressed his line and went on fishing. This rod has been used five years since and shows no ill effects.

EXECUTION OF THE ROLL CAST

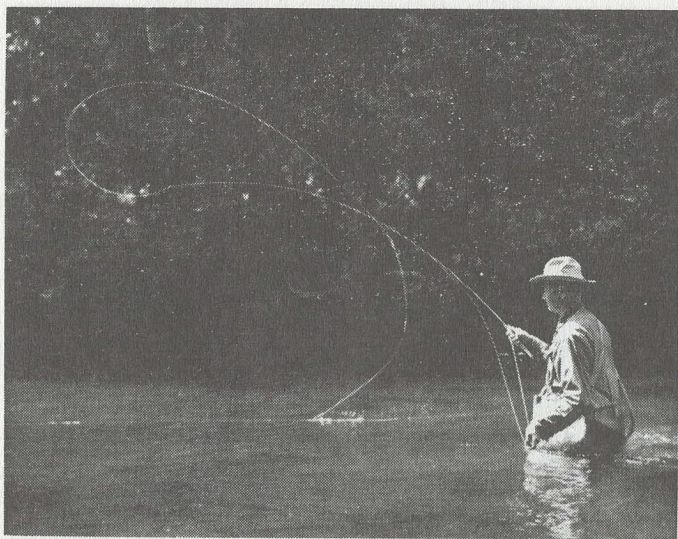
Demonstrated by Paul H. Young



After allowing line and fly to drift down toward you, slowly raise rod tip, as shown above.



When line forms a large loop under rod tip, snap rod forward.
(Photos courtesy of "FRIENDS" Magazine)



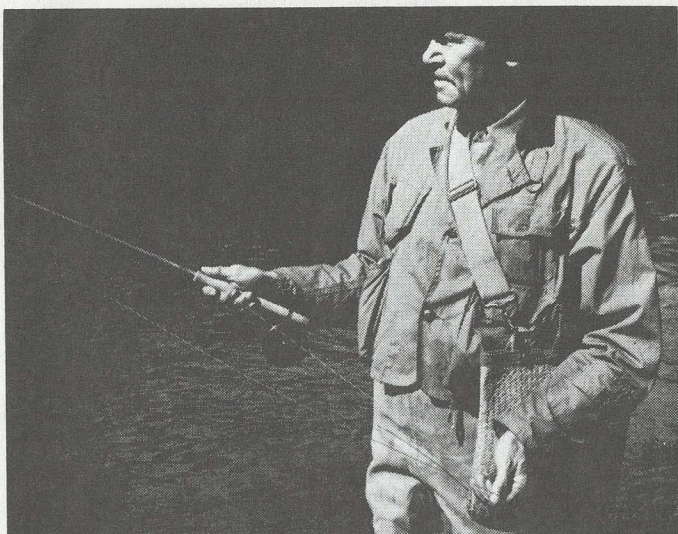
Complete the forward movement of the rod, the line has begun to "peel off" the water in photo above.



Line straightening out and settling full length on the water. (rod in use is parabolic 15).

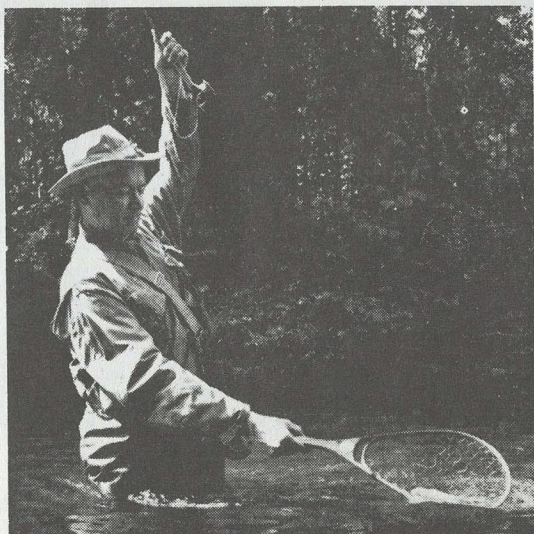
The roll cast is often necessary when heavy foliage behind the fisherman prevents conventional casting.

(Photos courtesy of "FRIENDS" Magazine)



Proper rod grip demonstrated above. Elbow held close to body, line travels from reel under fingers of right hand, and slack line is held in the left hand.

Netting technique demonstrated below. (A great many fish are lost during netting attempts.) Note that rod is held very high and net slipped under water and fish drifted over net.



(Photos courtesy of "FRIENDS" Magazine)

PARABOLIC ACTION FLY RODS

The name given this fly rod seems to confuse some anglers; hence, we shall attempt to describe the action, how it is attained and give reasons therefor. It is different from the old-time so-called wet fly rod. When under stress of casting or playing a fish, the Parabolic forms a parabolic curve, uniformly progressive. The "dry" fly rods form a more abrupt curve, with the tip and upper half of the mid working and the butt hardly showing a bend. To one who has striven for power per weight, this indicates that the butt is loafing. It is not delivering power of flexation (recovery from stress), but merely acting as a lever, in which case the tip is doing most of the work.

A parabolic butt has an extremely low taper. The tip has two compound tapers and is exceedingly fast in recovery. In making a cast, the butt flexes clear into the hand and can be seen and felt. On delivery of the cast, the lower half of the rod gets in its power impulse while the upper half is still flexed. Then, as the tip straightens, a seemingly second power impulse applies, which straightens a long line or shoots an abundance of line, if desired.

These rods, fitted with a conventional parabolic tip, are a little slower in action than the stiff-butted, light-tipped dry fly rods, but better adapted for wets, nymphs, streamers and bugs. They can be fitted with a lighter (dry fly) tip which makes them well suited for dry fly work by speeding up the tip action. For this reason we make two different tip actions (wet and dry) in several of our parabolic models to make them true dual purpose rods.

This does not imply that the tips cannot be used interchangeably during a day's fishing; the difference between them is not great enough to inhibit fishing either way with either tip, only enough so that one tip action is more suitable for one type of fishing regularly than the other.

A slightly different timing must be developed to effectively permit the parabolic butt to do a lot of your arm work for you, this easily being mastered in a few hours, assuming you already know the fundamentals of fly casting.

After these few hours the true value of the parabolic action is readily apparent and easier and longer casts are yours from then on. Another feature of the parabolic action is that it permits landing larger fish on lighter leaders and smaller flies because it takes more of the stress off these by virtue of its full length shock absorption or flexibility rather than confining this attribute to the tip alone.

None of our fly rods are full parabolic action (that action referred to as a buggy whip or Eng. wet fly action) but are all *modified* parabolic action which give them considerably more power and versatility while retaining the basic advantages of the true parabolic action.

Amazing Power and Stamina

Dear Mr. Young:

My wife and I are proud possessors of two rods made from your fine sets and I can truthfully say they have the finest action and performance for their specific types I have ever seen or used. Your 7 1/2' 3 1/2 oz. is really amazing in its power and stamina.

The 8' Parabolic 15 is also amazing. Everyone who tried it remarked about its great power for its weight, and its extreme accuracy. Yet, with all its power, it has the delicacy necessary for the finest work with very small flies.

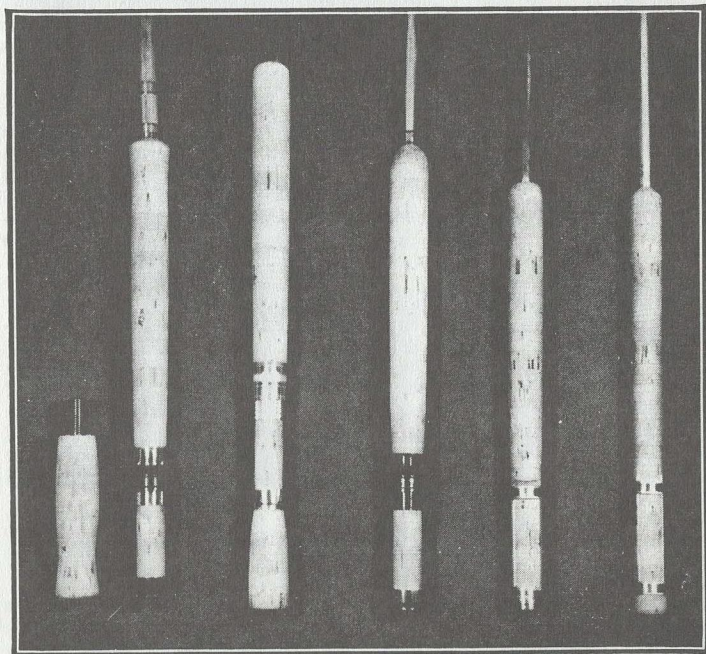
Last July, during hot weather and low

water, I took many good Browns up to 17"—18" on No. 18 and No. 20 midges and 5x gut—and didn't lose a single fish by leader breakage. The action of the rod, extending through the grip, keeps the fisherman in closer touch with the hooked fish, because every movement can be felt in the hand—a safety valve, because excessive strain is felt immediately.

I use the rod extensively for dry fly and nymphs and find I can hook strikes more easily, under tough conditions, particularly in slack-line work. Yours is my pet trout rod! Congratulations on a really great design.

C. K. L., Pennsylvania

REEL SEATS



5

4

2

1

3

SKELETON SEAT NO. 1

Cork skeleton, nickle silver hood cap and slide band. Note milled flattened recess for reel base. This reel seat fits most single action reels, and is preferred by many anglers. It is not suitable for automatic reels.

SCREW LOCK SEAT NO. 2

Our own design and make. Hard aluminum, English round threads. For users of automatic reels, and heavy duty single action reels. Cork barrel, nickle silver hood cap. Adds $\frac{1}{4}$ oz. to finished weight of rod.

FEATHERWEIGHT SEAT NO. 3

Featherweight, two ring reel seat for light single action reels, will not hold automatics. These are the lightest secure reel seats possible to make.

Routed reel trench insures perfect seating and two hard 18% nickle silver knurled rings secure reel base.

PERMANENT EXTENSION BUTT NO. 4

On heavier numbers that are used on salt water fish, salmon, steelhead, etc. we suggest the permanent built-on extension. It is of cork, and is two inches long, but is sufficient to keep the reel handle from fouling one's clothes when butt is held against the body.

REMOVABLE EXTENSION GRIP NO. 5

For rods to be used on long fighting fish as Steelhead, Salmon, Grilse, big Trout, Stripers, etc. This is not used while casting, but is slipped into position after fish is "on". It serves to keep the reel handle away from the clothes and to rest the left hand during a long battle. \$5.00 extra.

THE LIGHT TACKLE TREND

Being light tackle enthusiasts, we are more than mildly interested in the definite light tackle trend evidenced in the past few years and have developed several new rods which we hope will give impetus to the movement.

Fishermen, looking for more sport from average sized fish, find the answer in a rod light enough to make ordinary trout feel like whoppers. The first three rods following belong in this category, ranging from 1¾ oz. to 2⅞ oz. Whichever you choose, you can be certain it will add immeasurably to your fishing enjoyment; for besides allowing fish more fight, it will be almost effortless to use all day and require no more exertion than wading a stream empty handed does.

During the brilliant summer days when wary Browns are feeding sporadically on minute flies, many veteran fly fishermen quit the stream to idle away the "dead spell" awaiting what they consider a more propitious time.

All too often they are missing out on some of the greatest sport that trout fishing offers by not having an outfit designed to capitalize on these truly productive hatches. Limit catches can be taken with regularity if a tiny dry can be daintily proffered with the degree of finesse only an ultra light rod such as described permits.

These rods were developed primarily to manifest the practical use of those diminutive flies and nymphs so often called "too small to be effective." They were definitely not designed for spinners, sinkers or wooden or metal lures labeled "fly rod size."

When battling a good fish these light rods should be used judiciously and turned over at intervals to equalize the stress as pictured on page 18. This is often difficult to remember during the heat of battle but will prolong the life and straightness of your rod immeasurably.

This light tackle trend also shows a tendency toward killing fewer fish and releasing more unharmed, by the use of barbless hooks. Contrary to popular opinion, no more fish are lost on barbless hooks if the line is kept taut than would be on a barbed hook.

The main difference is that fish can always be easily released from barbless hooks whereas a barb is frequently anchored in a vulnerable spot. For 25 years we have supplied several types of barbless hooks to conservation minded anglers who wanted them. Now, due to frequent inquiries, we will make to order conventional patterns (others where sample is furnished) on needle point barbless hooks, requesting a minimum order of at least one dozen flies, the cost being the same as regular patterns listed further on.

Your fishing hours will be more enjoyable if you are not burdened with the thought of that last 6" trout you released after tearing away part of his jaw while extracting your hook.

THE MIDGE

6'3"-1¾ oz.

Almost without exception every Midge purchaser this past year has written us glowing letters of commendation using every superlative in the dictionary. Many state that it has actually made fishing a brand new experience and that their once highly regarded favorite rod has been relegated to second fiddle. Some have taken eastern salmon in the 12 to 14 lb. category with one and state their rod shows no effects from these battles whatsoever.

This diminutive dynamo has brought exclamations of surprise from all who have ever felt of it. It has actually made casts of 80' with an HDG line, although it definitely wasn't made for this purpose. A number of fine tackle fans have taken trout over 20" with it this past season and marveled at its ability to withstand punishment. It easily covers the average stream and is especially suited to tiny midge dries and nymphs, hence its name.

The fact that it requires an HEH line should dispel any idea of its being a toy. Lighter lines are made, but not for rods that will stand up to 20" trout and cast 50-60 feet with ease.

In this day of lesser bag limits and increasing rod pressure the most possible angling enjoyment can be derived from a rod light enough to make 8" trout a picnic to play and yet be able to safely handle a lunker should you entice one.

Landing 4 lb. trout on a 1¾ oz. rod and a size 20 fly understandably sounds like a paradox. Actually, when using these small hooks and their requisite 5 or 6X tippets, your chances of landing fish of this size are better on an extra light rod such as the Midge than any heavier one. It will absorb more of the shock and consequently put less tension on the tippet and the small area of hook contact.

The Midge has aluminum ferrules, Reel seat No. 3, and a snake guide in place of a ringed butt guide, all for weight reduction. Being a tiny rod, only the smallest reels are proportionate, especially the Hardy St. George Jr., second choices being the smallest Uniqua or the 1492 Medalist. It is important that we know the type of reel you intend to use so the reel seat can be made accordingly.

Order a Midge today and you will soon realize why exalted owners everywhere write to tell us of the incredulous groups they invariably attract wherever they fish. We have received quite a few orders from fishermen who were among such spectators and after apprehensively watching the owner best a sizeable scrappy fish "decided then and there they must own a rod exactly like it and inquired of him where and by whom it was made and he gave me your name and address."

Complete with extra tip, partitioned cloth bag and case. Price \$75.00

TROUT FISHING A PLEASURE AGAIN

Dear Mr. Young:

I wonder if you fully realize the contribution you have made to people like myself with the advent of your Midge. Several years ago I suffered an attack of Bursitis in my shoulder and the pleasure I once associated with trout fishing was just about gone. Although my 7½' rod I formerly used would be considered light by conventional standards, I could never fish for more than an hour before tiring to such a degree that I had to wade ashore and sit on the bank and rest my tired arm. Now I can fish 4 hours in the morning and 4 or 5 hours in the afternoon, upstream downstream, wet or dry; that dainty rod and baby Hardy reel feel like a "fairy wand." At first I was a little apprehensive of what would happen if I hooked a large trout but my fears were dispelled on our very first trip North and I am still amazed at how easily it handles good sized fish. I know there must be many others who are in the same boat as I was and if they enjoy trout fishing as I do, I hope they can become acquainted with your wonderful Midge so they too can look forward to hours of tireless enjoyment as I do now without spending half of my fishing time recuperating as I formerly did.

Mrs. Paul Cardell, Birmingham, Mich.

THE DRIGGS RIVER

7'2"-2½ oz.

This little rod was developed several seasons past, after a trip to the Alder canopied Driggs, which holds some very good Browns. It was found that plenty of tip power was needed to hold the scrappers out of the brush, but the casts were of necessity short. It will fish the average trout stream with effortless comfort and handle small dries and nymphs equally well.

For those who have searched for a short light rod for narrow brushy streams and creeks, we state without reservation that the Driggs is a paragon, designed expressly for this purpose. A considerable number of tests and changes finally produced the precise tapers to give less than 2 oz. of bamboo the faculty to daintily drop small flies at short distances and still have ample power to turn a good Brown from his protective cover. Once this is actually experienced, we are certain that you too will effervesce as much enthusiasm as has everyone who has used it under these exacting conditions.

For ultra light rod fanciers, the Driggs is obtainable with aluminum ferrules and reel bands (reel seat No. 3, page 13) at a finished weight of only 2½ oz. Never, regardless of composition, has so much tip power been compacted into a proportionate weight.

Recommended reels are the 3" Hardys, 3" Pridex or Beaudex, and 1492 Medalist. For strictly close work and short casts an HDH line is most satisfactory. For more open water and longer casts an HEH is more appropriate.

The Driggs comes with two 4½/64ths tips, the ferrule setup being optional.

At 2⅞ oz. it is furnished with nickle silver ferrules and Reel seat No. 1.

At 2⅓ oz. with aluminum ferrules and bands No. 3. Deluxe grade only. Price \$75.00.

Lapeer, Mich.

Dear Paul:

I have been intending to see you and tell you how each of the three rods you made for me have worked out. As I think I told you once, I have five brands of the highest priced rods on the market.

First, the Bone-Snook rod enabled me to reach out in the Trade Winds, and put big flies where I wanted them to go for the first time and to handle many huge Snook and other salt water varieties, with no noticeable strain on the rod.

Next, came the Martha Marie. This rod really is all the rod I ever need for trout fishing, wherever I go.

It handles nymphs, dries and streamers

to my complete satisfaction, and big fish as well.

No. 3, is the Salmon rod, the picture will show you what happened to some really fine bright fish, and I was amazed at the little time required to best these huskie fish.

Best of all, the fishing is nearly all done in a canoe, and I was most agreeably surprised that I could sit and cast continuously without tiring.

You have most likely had inquiries from several of my friends who are interested in rods, and you may be sure you will hear from more. Thanks for the finest rods I have ever used.

Ned Jewett.

THE PERFECTIONIST

7½'-14/13-2⅔ oz.

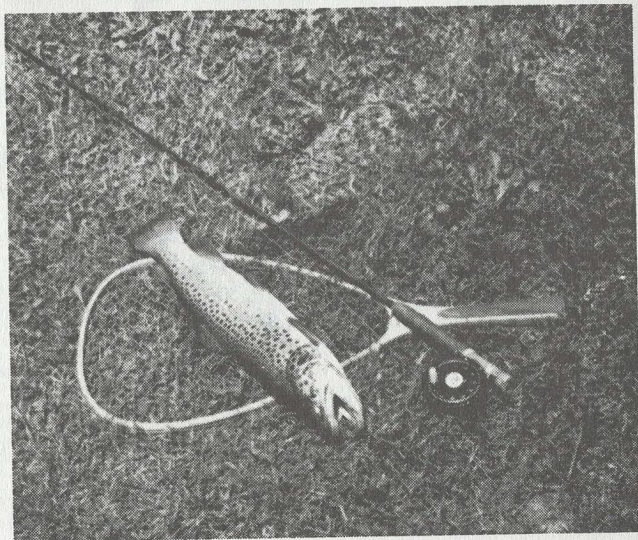
This is the most delightful and efficient rod in its weight class we have ever made. It is an all around dry and nymph rod and casts beautifully at from 15' to 60'. It hits its peak efficiency with the tiny late season flies and very fine leaders, in trained hands, it will execute curve casts of any size needed.

Several times this past summer I had the privilege of taking some very good Browns on 18 to 20 dries and nymphs with this rod using 6X tippits and never once broke off in a fish.

Naturally it takes longer to play a large fish on a 2⅔ oz. rod and its correlated tackle. However, with finesse he is landed, and there is no time limit to the blissful hours of reminiscence which inevitably follow such a personal triumph. A "duel" such as this frequently converts an indifferent fisherman into a rabid enthusiast.

In order to get the utmost power and performance versus weight, the Perfectionist is fitted with the same type ferrules and reel seat as the Midge. The Hardy L.R.H. Lightweight reel balances perfectly, as will the St. George Jr. The line should be an HEH with no more than 18" of level. Made in deluxe grade only. Price \$75.00.

A PERFECTIONIST TRIUMPH



THE MARTHA MARIE 7½'-14-3½ oz.

This number has for years been one of our most popular rods in the light rod category. It has the same advantages over longer rods as the three preceding models, where restricted casts in close quarters are necessary.

This doesn't infer that the 7½' is not highly efficient and well adapted to bigger waters and lakes. Our 7½'-14 ferrule rods will cover just about as much water as the big rods. Mrs. Young has used these little rods exclusively for trout for years on all of Michigan's large rivers, as well as elsewhere.

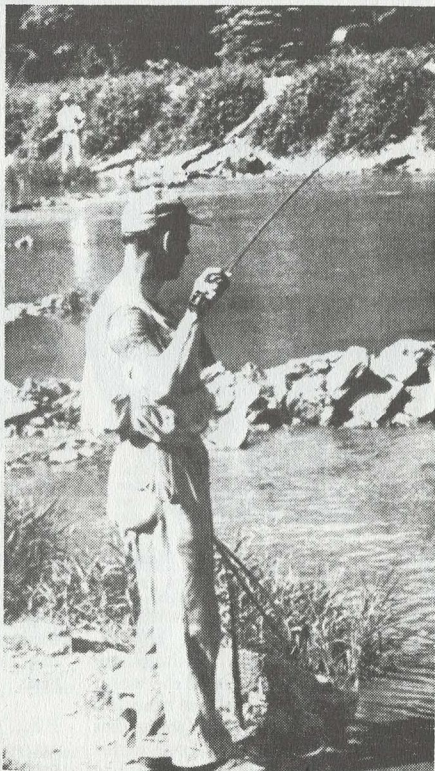
We also use them on blue gills and rainbows in lakes. They are tireless to use, kill big trout nearly as quickly as the heavier rods, and often save a fish on fine gut that a much more powerful rod would lose. One of these rods would prove to be a decided rest if changed to for part of a day's fishing and we have a number of customers who never use any other rod.

The recommended reel and line setup are the same as for the Driggs (page 16). Deluxe grade only. Price \$75.00.

* * *

Chauncy K. Lively of Pittsburgh, Pa. demonstrates proper technique in handling a large fish with a Midge rod. Note that rod is inverted, i.e. guides up. This is done periodically during a long fight to equalize strain with the end result that after many such engagements his Midge is still perfectly straight. He has taken over two dozen Browns between 18-22 inches on this rod and says it looks the same as the day it left our shop.

* * *



THE STANDARD DRY

8'-14-3¼ oz.

This rod caters to the purists and was designed expressly for fast water upstream dry fly fishing. The light tips and dry fly butt make it extremely fast, increasing your percentage of hooked fish per strike. This has been our standard dry fly rod for years and has loyal boosters in nearly every State. It handles an HDH perfectly at any distance from 15' to 60'. Reels recommended are 1494 Medalist or any of the 3" Eng. makes.

Deluxe Grade Only \$80.00

For a stiffer dry fly rod see Boat Rod on Page 21.

Dear Mr. Young:

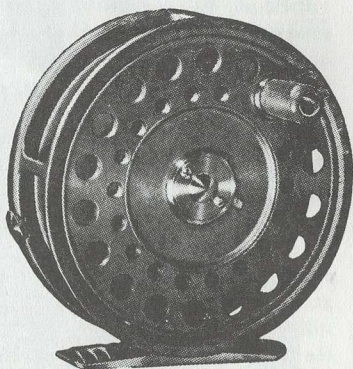
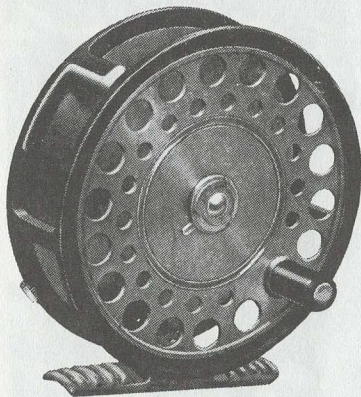
I just want to tell you how pleased I am with the rods you made for me this spring. My wife and I had a nice Canadian trip and your rods were outstanding in all respects.

The "Powerhouse" is a fine wet fly salmon rod. I used it all day without undue effort although it might be considered too heavy for all day use by some people. This is the first time I have used your rods and all three have met my fullest expectations.

Sincerely yours,
Col. L. P. Miller,
Arlington, Va.

HARDY LIGHTWEIGHT L.R.H.

HARDY PRINCESS



You've Made a Solid Customer

The two rods "Midge" and "Driggs" arrived along with the leaders, King Eider line, and St. George Jr., fly reel. The rods are beautiful in every sense of the word. The little "Hardy" reel is a beautiful piece of workmanship (somewhat of a rarity these days). Your better products, material, workmanship,

and interest have made a solid customer of me. I like the way you do business. From now on all my fishing needs will be taken up with you.

R. C. H.

Los Angeles, Calif.

P.S. The barbless "Midges" just arrived in the mail. Remarks: Perfect.

THE PARABOLIC 15

8'-15-3¼ oz.

This rod, also known as the K. T. Keller model, is the most versatile of our entire line. It has brought us so many compliments from every section of the country that we have made this our feature rod. Optional are two tip actions: one can have 2 dry fly tips of 4½/64, 2 parabolig tips of 5/64, or one of each. It is this last combination which effects the degree of versatility that has brought us dozens of letters (on file) from anglers stating that since acquiring their Parabolic 15 they have shelved or disposed of 3 or 4 or sometimes more rods of various makes that they formerly used regularly.

We realize the difficulty one who has never used a parabolic rod has in visualizing its adaptability to different uses. The following are substantiated facts, not idle boasts. The finished rod weighs less than 4 oz., yet with the 5/64 tip and an HDG will cast small hair bugs over 80' with ease. The 4½/64 dry fly tip will perform beautifully at from twice the leader length to 60'.

At any time the angler can switch from upstream dry fly work to downstream nymph or streamer fishing with absolutely no sacrifice in efficiency. There are scores of expert fishermen who have written us about their amazement at finding they can regularly land 4-6 lb. trout on 4X leaders and No. 14 flies, often even finer terminal tackle.

This rod is the culmination of our tedious and painstaking experiments to produce *the* finest all around day time trout rod. Several proud owners have confided in us that if they knew they couldn't get another they wouldn't sell their P 15 for 10 times its cost as they couldn't put a value on the endless hours of stream enjoyment they derive from using it.

Reels: 1494 or any of the better 3" makes.

Lines: HDH for all regular dry or wet fishing. HDG for small bugs or distance.

Reel seats 1, 2, or 3 optional. Tips optional as stated above.

Deluxe Grade Only \$80.00

Dear Cowan:

I now have two—rods, but I think I will not get any more. Paul H. Young rods at Detroit, Mich. are so much superior and are so outstanding that I do not think that any one else is in the running these days. I do not think you will be satisfied until you have one of Paul's wonderful rods. Since you are such a dry fly man, I strongly recommend you start out with his famous 15-5, which can be had with one dry tip and one semi-parabolic tip for wet fly and nymph fishing. The rod weighs well under 4 ozs., yet will cast a HDH or HDG line to 80 feet with little or no exertion. It is to-day America's premium rod. I am asking Paul to send you a catalog.

If I get to Utah this fall I will certainly look you up. With best regards, I am,

Sincerely,
J. Clark Salyer II
U. S. Dept of Interior
Fish & Wildlife Service

American Embassy, Rio de Janeiro

Dear Mr. Young:

I am glad to report that the three rods arrived safely.

Since this is the first time I have ordered such a highly personal item as fly rods from a catalog, some remarks may be in order. Your product not only meets, but actually surpasses all you have printed about it.

The material, actions, and your workmanship are superb, I also appreciated your assortment of flies which were dressed exactly in accordance with my preference.

Since I no longer have time to roll my own, it is an additional satisfaction to know that you are in business.

Sincerely,

Robert B. Terrill
Counselor of Embassy

The rods Mr. Terrill is using, The Florida Special, the Texas General and the K. T. Keller. (8 ft. 15 parabolic.)

THE BOAT ROD

8'-16/15 fer. 4¼ oz.

This rod was designed expressly for float fishing where a very fast tip action plus butt power is needed. When floating at the same speed as the current, only one shot at each "run" can be made and it must be accurate to give the fly a decent float. As wind conditions and backcast hazards vary continually, the tip must literally drive the fly out with little or no false casting or the stretch is overrun before you can get a presentable shot in. If the rod hasn't the power to snub up a fair fish while the boat is being stopped, you will lose many fish you should be landing.

Longer rods are too cumbersome with the backdrop constantly changing and this 8 footer fills the bill where length, speed and power must be combined for proficiency under these conditions.

Although designed as a boat rod it can come in very handy when wading on blustery days when you find that with your light rod you are continually hooking either yourself or every snag and bush within range. (Also known as "The Encampment" by a number of users, being their favorite rod on that famous river and others in Wyoming).

Reels: 1495 or the larger automatics. It takes an HCH line and is fitted with Screw Lock Reel Seat No. 2. Price \$80.00.

Absolutely No Comparison

Dear Paul:

Last Sunday I used the eight foot rod you made for Ethel, to fish Floyd Aker's water in Maryland—the stream that used to belong to Larry Ritchie, Herbert Hoover's former secretary. Without reservation this is the best light fly rod I ever used in my life!

You hear a lot about rod actions and there is a lot of hair splitting, but there is such a marked difference between this rod and others I have in its class—including your original eight-footer, good as that was—that there is absolutely no comparison.

You must have a similar model for Walt Weber, because he is certainly praising the one he has.

I know you continually redesign and improve your rods, but I don't see how you can improve this one. It handles 50 feet of actual fishing line (I don't mean exhibition and occasional long casting) as though it were 25, with ease and precision. I've read of rods that do the work themselves, but until I used this one I did not know the meaning of the phrase. Casting is effortless. You are to be congratulated on a masterpiece.

LUIS MARDEN
Washington, D. C.

Dear Mr. Young:

Please forgive me for not writing you sooner and giving you a report on the Salmon rod you made for me. It was wonderful, and a fourteen pound salmon on the end of it really gave me some action that I never dreamed possible.

The rod, line, reel, everything was perfect, and I appreciate your picking out, sight unseen, such good equipment for me.

Sincerely yours,

Jay Taylor
1st Natl. Bank Bldg.
Amarillo, Texas

Dear Mr. Young:

The Special grade Parabolic 15 and new line arrived today and I was able to get away to give it a tryout altho it rained steadily. Casting with it was effortless; its action a new experience with me. Also of interest, took seven Eastern Brooks and I lost one but did not lose a single fly on the strike (.008 tippet) which I have done before with my other rods. My, how nicely this rod handles even on such short acquaintance.

Next week hope to give it another round in B.C. on rainbows and cut-throats.

Kindest regards,

D. B. Bell, Idaho

THE TEXAN

8½'-15-4¼ oz.

This classifies as an intermediate dry fly rod, midway between light and heavy. It is light enough to dry fly all day in strong hands and will handle large dries and small bugs proficiently. It makes an excellent dry fly salmon rod for those seeking the maximum sport on light tackle.

Besides being a topnotch heavy duty dry fly and light bug rod, in skilled hands it will handle large fish very well. Mrs. Young used only this rod in taking her bonefish, snook, channel bass and snappers. An HCH works best when strictly dry flying, whereas an HCF gives longer casts where necessary.

Suitable reels are the Hardy, Pridex or Beaudex 3¼". (If backing for long running fish is needed the wider spool models are better, or the Medalist 1495). Reel seats No. 1 or No. 2 optional, p. 13.

Deluxe Grade Only \$80.00

For a lighter dry fly rod see 8' Standard, page 19. For a stiffer model see Texas General, page 23.

Highest Achievement in the Bamboo Rod Making Art

Dear Paul:

To my mind the beautiful rods you have custom made for me represent the highest achievement in the bamboo rod making art.

The 9' 18-7 rod* arrived Monday—the most beautiful rod I ever laid eyes on—the most attractive of the several you have made for me. I immediately gave it a tryout and it is everything one could wish for in this particular weight and action and for the purpose for which it was designed. The wood toning is a work of art. You don't have to worry about any slander once anyone has seen or handled a sample of your work. The answer to any criticism of a weak tip is the tremendous amount of line your rods pick up, which exceeds that of any rod maker's production I have seen—and that is practically all of them in this country.

While I have a dozen rods made by practically all the famous makers of America, I wouldn't trade my set of Young rods for all the others put together.

This is because your rods are not only beautiful, but more important they are the most effective casting implements an angler ever possessed. Ounce for ounce they outcast any other rod from 15 to 25 feet. With them I am equipped for any type of fly fishing because of the ease with which distance and control are achieved. I am looking forward to your future designs in the high-grade custom field.

J. CLARK SALYER II
U.S. Department of the
Interior
Fish and Wildlife Service,
Washington, D. C.

*(modified parabolic)

Dear Mr. Young:

I would like to offer a word of praise for that splendid rod I purchased from you three years ago. (8'-15-Para.) After over 30 years of buying and discarding I have for the past three years been thoroughly satisfied with the power and line handling ability of this rod. Streamers in heavy water or 16-18 dry flies on still water, it completely satisfies.

Once a person gets used to its action other rods leave much to be desired. Now why would I be buying another rod? I am setting it up for a fishing pal of mine who has long admired the completeness of your products.

As ever,

F. L. Miller
Winnemucca, Nev.

Dear Mr. Young:

(In your card) you noted that I had an 8½'-16 Para. I also have an 8½'-15 PHY Special Dry Fly; an 8'-14 D.F.; an 8'-15-D.F.; and an 8'-15-Para.

Now,—I am going to pay you the most sincere compliment that a man can pay another craftsman. As I said I worked with rods a long time and feel that I at least know the rudiments of them. Your rods, your sticks, all your materials are the best I have ever used. The material in the sticks is the best I have ever seen, the workmanship is tops, and your tapers are tops, also for power, for accuracy, and for delicacy. With the 8'-15-D.F. I have done over 100 ft. and I am no distance caster.

Very sincerely,
A. L. (Al) Lombard
Binghamton, N. Y.

THE PARABOLIC 16

8½'-16-4½ oz.

This unusual rod probably has the most line casting power per weight of bamboo of any rod in our line. It has been pronounced the best performer for wet fly, streamer and "bug" fishing by one of the country's most experienced trout fisherman. It has *double* action, while playing a fish you will feel the action of the butt right into the cork grip. The butt gets in its power impulse first, then as the tip straightens, the line really goes places. This is a slow rod, not recommended for steady dry fly work. The tip stands stiff and straight while the line shoots through the perfect tunnel, as there is no wobbling around of the tip to hold the line back.

One of its best features is that it will kill big fish on one pound test tippets. This rod has taken many large trout in the West country where lots of wet fly fishing is done on the big waters.

For those who have refined their bass fishing, like rhythmic-tireless tackle, and will give big fish time for the sport there is in it, this rod is a treat to use.

The butt is only .305" in diameter, so we want you to hold the rod at not greater than 60° to the strain when it is greatest. We have taken very large browns on small nymphs and 3X gut on this rod, also 8 lb. cutthroats on 1X gut. It is a circus to play a grilse on this rod.

Suitable Reels: Medalist 1495 or Hardy 3" models.

Suitable Lines: Level D, H.C.H. H.C.F. (cut tapers back to .030 at least, and use leaders with butts of .017 or .018 diameter.

Deluxe Grade Only \$80.00

Leaves Nothing to be Desired

Dear Mr. Young

I have purchased two of your fly rods and am very pleased with both of them. The little dry fly rod is 8'-14-4½ and is a honey but the one I use continually is the 8'-15 Parabolic. I have caught hundreds of trout up to 4 lbs. with the Parabolic in the last three years and it looks the same as it did the day it came out of the case the first time. I have several rods, some of them expensive with good names, but the 15 Parabolic is the only one I use. It leaves nothing to be desired.

Russel C. Malone
Matamoras, Pa.

Excellent Workmanship

Dear Mr. Young:

Rod and line arrived in fine condition—and I appreciate the most excellent workmanship in this rod. You are to be congratulated in producing such a fine product. In my enthusiasm for fresh water fishing I overlooked the need for chromium guides for salt water fishing in Chesapeake Bay, and I am glad you used them. I am sure my many fishermen friends will envy me this rod. I can hardly wait to try it out.

A. S. K., Delaware

We will pay postage on all orders over \$5.00 and insurance on orders over \$10.00. On orders under \$5.00 please add sufficient postage and on orders under \$1.00 an additional 25c handling charge.

THE TEXAS GENERAL

8½'-16-5 oz.

This rod classes as a light bass bug rod or a medium heavy trout rod.

The General is the choice of a large number of Texans as well as others who use it for bass bugging, with a C level line.

It makes a fine easy-on-the-arm streamer or wet fly rod as well, and will handle bass bugs up to size 1/0 at any reasonable distance. In good hands, it offers fine performance at salmon and grilse dry fly and nymph fishing. There are several Floridians who maintain it is ample for their bone fish and other salt water fly fishing.

The General is well adapted as a lady's bonefish and salmon rod, as it doesn't have the leverage on the wrist that a 9' rod would have.

Suitable reels: 1495-1495½ Medalist (The latter if 600' of backing is wanted as for bonefish and salmon).

Hardys' St. George 3⅜" Pridex, or Beudex 3½".

Suitable lines: Level C Silk or Nylon. G.B.F. Nylon. H.C.H. Silk or Nylon, cut back into taper to .030 or .032. The latter preferred for salmon dry fly fishing.

Optional: Both 6/64 Tip Tops for Bugging and Streamers, both 5/64 Tip Tops for Dry Fly work, or a combination with one of each.

Deluxe Grade Only \$80.00

For a lighter 8½' dry fly rod see 8½'-15, page 22.

For a more powerful bass and streamer rod see 8½'-17, page 25.

Camp Roberts, Calif.

Dear Paul:

Just a few lines to let you know how much I enjoy using the "Texas General" that you made for me. I have been a fly fisherman for twenty-five years and this is indeed the finest rod that I have ever seen or used. There is none of that feeling of "overworking the rod" when I put out a long line (even with my largest bass bugs), and it does wonderful work with streamers and large wets.

You can put me down as a Paul Young fan from now on.

Best regards,

Kenneth E. Halloway.

The GENERAL Has "It"

P.H.Y.

For the first time in history there's a Bug Rod with plenty of strength and a minimum of weight. There never has been one before. That General has "got it." There has been a crying need throughout the Southern States for such a rod for many years. I let Bryan Black and George Faucett feel of my General. Both are on a National Champ team. They both remarked, "That's a rod! Push it as a leader."

Don E. West, Dallas, Texas

Lightness, Balance, Power

Dear Mr. Young:

The beautiful GP rod sticks arrived today and I think you have developed something that bug fishermen have wanted for years. Bug rods in the past have been

much too heavy and cumbersome to use except for short periods of time. Your rod has lightness, balance and ample power for even the largest bugs with a minimum of effort on the part of the caster—a combination that cannot be beaten. I shall complete the construction soon—to display to the boys at the club.

Later—

Just a note to tell you what a truly fine rod you have in the General. I took my rod out to the platform last night, and despite adverse wind conditions I could lay out beautiful casts of 60 and 70 feet. Two of our veteran fly casters, Gasaway and Clerihew, were very enthusiastic in their approval. Don't change anything on this rod! You really have the answer just like it is!

My sincere appreciation for a fine rod, I think it's the best fly rod I ever handled, and that covers considerable territory.

T. C., Texas

THE PARABOLIC 17

8½'-17-5 oz.

This number is a small powerhouse. It throws a G.B.F. line 90-100 feet without being forced. If one makes "bugging" a hobby, this rod was especially developed for that. It is just as well adapted for use with streamers, and is a winner for some top flight tournament wet fly casters. There is terrific tip power in the standard "Parabolic" tip, as it will use a C level line as well as a G.B.F.

This is an ideal "evening rod" on a trout stream. If a large fly hatch such as drakes come off, it will handle a large drake beautifully, even on a torpedo line. If no hatch occurs, being primarily a bug rod, it is made to order for hair bugs and poppers and has plenty of power to stop big browns from running back under their log jams.

If no surface activity is apparent it will handle streamers as only a parabolic rod can, whether long or short casts are necessary.

Recommended reels 1495 or 3½" Eng. Models.

Deluxe Grade Only \$80.00

Everything I Wanted

Dear Mr. Young:

My 17/64 parabolic bass rod is without a doubt the finest thing I ever held in my hands. I had become so fussy about rods I didn't think I'd ever find one that would be everything I wanted. This one is. It does all the work. I just guide it. Fishing again is a pleasure.

B. B. D., Texas

Dear Mr. Young:

Only recently I tried a Cordland Strato-line silk GAF line on the 9½ ft. GAF rod I got from you and got 15' better than I have ever been able to obtain with any other rod—and I own many, many rods, including a pair of 10' bug rods.

Yours very truly,
Hall R. Elder
Ruston, La.

More Line — Less Effort

Dear Mr. Young:

I had great expectations for my Parabolic 17, but never dreamed it would exceed all of them. It puts out more line with less effort than I thought possible for any rod to do. It is amazing.

B. B. D., Texas

Big Snook and Bonefish

Dear Mr. Young:

A little over a year ago I purchased a Bone Special Fly Rod from you. I have yet to find its equal in handling large fish such as I like to fish for in South Florida. I caught some mighty nice fish down on the Keys this winter—big snook and bonefish.

J. L. M., North Carolina
(9' 18-7 modified parabolic)

Quality Makes the Difference

Dear Paul,

I must apologize for not promptly advising you of the safe arrival of my "Bobby Doerr" rod, but the delay has afforded me time to test it at actual fishing.

It is a beautiful rod, both in appearance and in actual use. I would never have guessed the difference a quality rod could make in one's casting, and I am sure this quality can not be surpassed under any other brand at any price.

Sincerely,
John W. Thaxton
Phoenix, Arizona

Parabolic Fly Rod

Gentlemen:

Last year I purchased from you the rod sections and accessories to make an 8½', 4½ oz. parabolic fly rod. I thought you might be interested to know that I killed three 10 lb. Atlantic Salmon with it and that these fish were beached and then tailed by hand. Needless to say, I am very much pleased with the rod.

G. B. E., Massachusetts

First Class Workmanship

Gentlemen:

I already knew the quality of the Pflueger reel and Ashaway line, but I did not know about the rod. I gave it a good inspection. It is certainly first class as regards workmanship and design, and I am sure it is going to give me years of wonderful service.

(9'—18 modified parabolic)
K. R. H., New Jersey

THE NYMPH SPECIAL

9'-16-4 $\frac{1}{2}$ oz.

Nymphing as a productive method of taking trout is getting more impetus recently as a result of a number of articles in national magazines. There is certainly nothing novel about the effectiveness of nymphs on trout, most ichthyologists agreeing that over 75% of a trout's diet consists of various nymphs and always has. However, there is something novel in the most effective equipment to present these with, the Nymph Special, specifically designed to fill the need for a perfect nymphing rod on lakes and larger streams.

This rod has firm but resilient holding power, its length giving sufficient leverage to cast extremely long fine leaders with dropper nymphs.

The 3" reels balance OK, also the Medalist 1494.

Use H.D.H. or preferably H.D.G. if long casts are needed.

Deluxe Grade Only \$80.00

NYMPH JR.

7 $\frac{1}{2}$ '-13-2 $\frac{1}{2}$ oz.

After much experimenting we have developed its offspring, the NYMPH JR., for nymphing smaller streams more efficiently. The JR. is 7 $\frac{1}{2}$ ' in length, weighs 2 $\frac{7}{8}$ oz. and handles more easily on waters where distance is not required. It has the same resilient holding qualities as its Daddy and its presentation of 18 and 20 midge nymphs is perfection personified. It will not achieve the 80' distances or handle 15' leaders like its sire will but can easily cast 50-60 ft. and handle 10' leaders which are sufficient on average streams.

(The Parabolic 15's nymphing aptitude must be reiterated during any discussion on nymphing as it gives a most commendable performance).

Suitable reels are any of the better 3" Eng. makes or the Hardy Light Weight. The line can be either an HEH or an HEG, the latter preferable if casts of 60' are desired. Made in Deluxe Grade only. Price \$75.00.

This little rod, properly fitted with balanced gear down to a pair of No. 20 midge nymphs on 6X tippet, can often make the difference between being "skunked" and having a picnic with those wise choosy Browns when they are whetting their appetites on these aquatic tidbits to the consternation of the great majority of fishermen.

Dear Mr. Young:

The eight and a half foot modified parabolic nymph rod you built for me a year ago does everything you claimed for it—especially handling large trout on light gut.

It really handles a lot of line. In my m'n'l at present are three rods, and I would like to have you tell me which

you consider is the most efficient and the most pleasant to fish with.

Hope you can find the time to discuss this with me, because I consider that your experience in fishing and rod building can never be matched by one who just fishes, or one who just builds rods.

Yours truly,

Stanley L. Eldert
Schenectady, N. Y.

THE BOBBY DOERR

9'-17-6 oz.

This rod, we are constantly told by its many devotees, is the best salmon rod ever devised. Being of parabolic action, it casts large salmon dries, wets, nymphs, medium bugs or streamers with equal facility, great distance being achieved with a minimum of effort. It has about the maximum weight and power that can be cast over long periods without the arm weariness usually associated with 9' rods capable of this type of work.

Its namesake, Bobby Doerr, ex Red Sox second baseman, claims it to be the ideal Steelhead rod for the Rogue River area, where he lives.

It is as fine a medium bass bug rod as is possible to make, and you won't have to rest your hand and arm after an hour's bugging. Changing tactics from bugs to wets involves only a change of lures, as this rod and a GBF handles either with the maximum efficiency. In two separate instances orders were placed for this rod on the spot after watching it perform on the Miramichi River in New Brunswick.

Another feature of the parabolic action which cannot be overlooked is the ability of this rod to handle large fish safely on 1X or 2X tippits, often required to produce results on brilliant days. It makes an ideal Bonefish rod for experienced hands in calm weather.

Suitable reels are the 3 $\frac{3}{4}$ " Hardy, Beaudex, or Pridex, or the Medalist 1495 $\frac{1}{2}$. These will allow sufficient backing for fish capable of long runs. DeLuxe Grade Only Price \$80.00

It Is Magnificent

Dear Paul:

The first ten days I was in Maine I used the little 8 $\frac{1}{2}$ footer—and just loved it. It handled wet or dry flies equally well—and made no objection to the larger streamers or bucktails. I thought it was tops. But out of loyalty to my first PHY rod—which made me a confirmed believer in PHY tackle—I switched one day to my original 9 footer.* And Paul, it's just as I've always said. You never built a rod like that before and you never will again. It just couldn't be done. It's magnificent—by far the finest rod I have ever cast a fly with.

Anything I can do with any other rod I can do better with that one—and twice as easily. I love it so damn much I'm almost reluctant to use it.

Col. G. M. O'Connell—Retired
Maryland

*(A 9'—17 parabolic)

Ideal Salmon Rod

Dear Paul:

I just returned from a week of Salmon fishing in New Brunswick on the Miramichi river. You will be interested to know that on my first day there, I killed a 16 $\frac{1}{2}$ lb. bright salmon, using the 9 ft. "Bobby Doerr" rod that you made for me.

As you told me, this rod, while designed for Salmon, Steelhead and Snook—should handle any fish that I am lucky enough to hook.

I will be in to see you about another rod soon.

A. S. Albright,

Exec. Vice-Pres., retired
The Detroit Edison Co.

THE FLORIDA SPECIAL

9'-18-6¼ oz.

This parabolic rod, our leading bonefish model, is also very popular on steelhead, salmon, stripers and bass. It is used by some of the country's best tournament men for wet fly accuracy and as a distance rod has frequently bettered 140'.

This model was designed to buck the trade winds on the Florida Keys when bonefishing, and is not a rod you can "bug" all day without knowing it. To utilize all its power, one must employ the "left hand cross haul."

The 7/64ths tip will shoot a GAF line into any wind short of a gale and lay out big bass bugs or tarpon streamers quite a distance.

With a 6/64th tip it becomes a much faster rod suitable for salmon dry fly with a GBG or for bonefish, snook, bass etc. with a GBF when smaller bugs or streamers are needed. As a combination with one tip of each size it will handle all the heavy work, wet or dry, on our larger fish most satisfactorily. Few men can use more rod for steady bugging.

Suitable reels are the 1496½ Medalist, the new #1498 Medalist, or the 4" Beaudex.

Suitable lines: For 7/64 tip, use G.A.F. Nylon cut at front end to .034. For 6/64 tip use G.B.F. Nylon, cut to .034. Level B for some bass bugging conditions. Reels need 600' of 15 lb. braided nylon or squidding line, spliced to fly line, if used for bonefish.

Price: Tip combination optional, DeLuxe— Salt water equipped throughout and has 1½" cork ext. butt, \$85.00.

Highly Satisfied

Dear Mr. Young:

Mark me down as another highly satisfied customer! Even though the wind was very stiff the water muddy and the bass season closed I took out the new rod for a couple hours and caught some crappies. I tried three different lines and reels, and both tips.

The 5/64 tip is ample for my fly and spinner combinations; with the lines I have, but the 7/64 tip will be the medicine for longer casts with a heavier line. I'll also want a 6/64 tip sometime. This will give me an all around rod for every condition I meet here. I even used a dry fly and long, light leader with the light tip and it was delicate enough for work here.

With this new rod my timing gave me no trouble. Now, for the first time, I can lay out 80, 90 and even 100 ft. casts which are straight, and under control even in a high wind. We have a lot of wind to buck here, so this was just the day to find out about the rod.

It is really fine in action, power and workmanship. Thanks for your help in selecting this, and the way you fill orders promptly. There are at least two ways of doing business, and I like your way the best.

C. H. L., Kansas

(Rod is 9' 18 with 5 and 7 tip tops)

Excellent Results

Dear Mr. Young:

I want to tell you how well pleased I am with my two-piece, 7½', 3½ oz. parabolic with No. 14 ferrule, and my 8', 3¾ oz. parabolic with No. 15 ferrule, that Don West helped me assemble. In Montana, Idaho and Wyoming I caught plenty big rainbow and brown trout up to 3½ pounds on dry flies. Most of the water I fished permitted long casting, and by using heavy lines and leaders up to 12' I got excellent results on the brightest days.

G. L. M., Texas

Dear Mr. Young:

The second rod arrived and my son was very much pleased with it.

The rod you made for me had a real workout in August and I like it so well I used it every day, although I had 5 other rods with me.

I think it no exaggeration to say that my Young rod played at least six hundred pounds of trout during August.

I shall want another rod like the one you made for me, but perhaps an oz. or ½ oz. lighter.

Very sincerely,

Blair Coursen, Pres.
General Biological
Supply House
Chicago 37, Ill.

THE POWERHOUSE

9½'-19-7¼ oz.

This is truly a "Powerhouse", having all the power that can be used in one hand.

In bonefishing, one doesn't cast the water, but only when a fish is sighted. Used in this manner, the rod doesn't break one's arm. It is recommended for large tarpon, bones, snook, reds, heaviest bass bugging, salmon, steelhead and stripers. In rough weather, used with a G2AF line, it will do a good job where lighter rigs would fail. It is a top salmon wet fly rod, and held at 45° no fish can strain it.

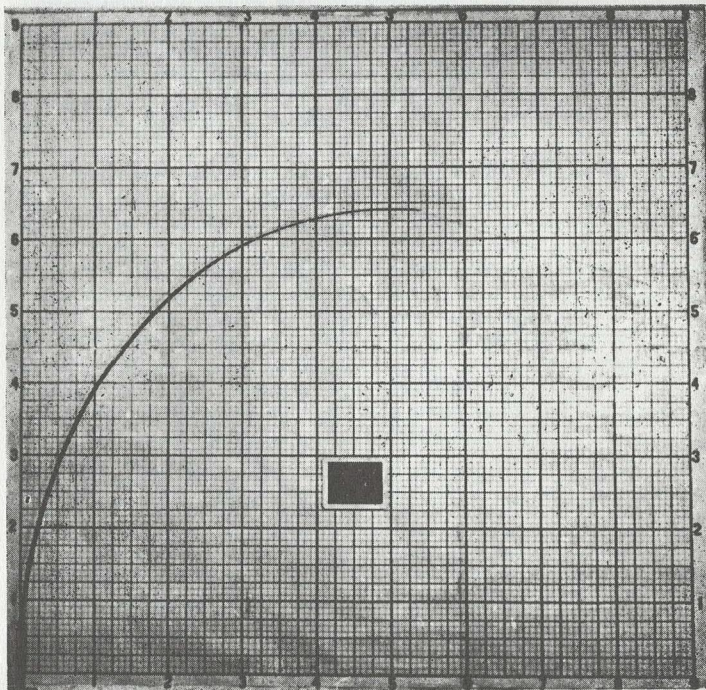
This rod was developed mainly for fly-caught tarpon record seekers. We have seen more than a few rods put out of commission by one tarpon. With all its power, it will be seen by the graph that one could whip a big fish with fine leader, as the arc shown is but one pound pull.

If you are doing salt water fly fishing for all varieties, and using big wet flies for other fish, this is the most powerful flyrod practical to use.

Recommended reels—Medalist 1498 or Beaudex 4".

Optional, 2"-1" or no cork extension below reel seat. Two inches is permissible on entries for prizes and records.

Price: Salt Water Deluxe \$90.00.



9½' 19-7 1 lb. Pull 90°

3 PIECE RODS

We offer the following 3 piece heavy rods - for easier portability where space is limited.

As these 4 rods are all 9' or 9½' their three piece construction can be a decided advantage in cramped quarters such as pack trips and plane flights. Rather than sacrifice power the ferrule sizes have been increased slightly to perform the same functions as our 2 piece rods. All have extra tips and salt water fittings. The two lighter rods on No. 20 ferrule are ideal for Steelhead and Salmon, and will cast a large bass bug as far as is practical.

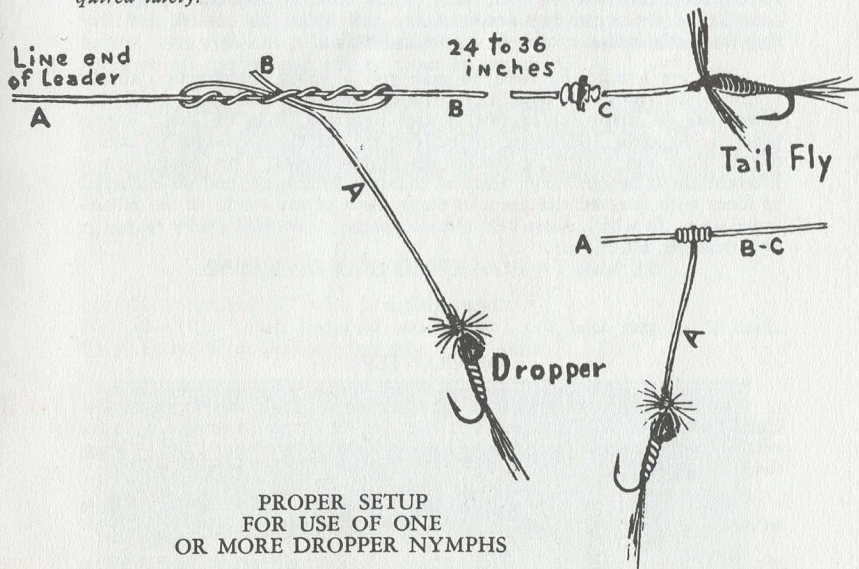
The heavier two on No. 21 ferrule are primarily light salt water models but where heavy going is expected are suitable for large fresh water fishing.

9'	20	14-7	6¼ ozs.	GBF
9½'	20	14-6	6½ ozs.	GBF
9'	21	15-7	6⅝ ozs.	GAF
9½'	21	15-6	6¾ ozs.	GAF

Recommended reels are Medalist 1496½ or 1498.

Price Deluxe—\$85.00

The following diagram, first published in our 1939 catalog, is reprinted here for the benefit of the many new addicts nymphing has acquired lately.



BALANCE

Important to rod buyers: we have seen a great many cases of a man on the stream with a fine fly rod outfit who was getting along miserably, just about discouraged and ready to find a new hobby. In nearly every case his outfit wasn't balanced, and would be a headache to even an expert caster. Many times we have had a talk, felt his rig, and got his permission to "doctor" it.

Line makers must adhere to a pattern in tapers, amount of level ends, etc., and can't anticipate a "fitted" line to every rod. The almost invariable cause of poor performance is the excess of fine level end on tapers.

For a number of years, before War II, we had made and sold as "P.H.Y. Sky-Line" a set of double tapered lines, with nine feet of taper, and 18" of level at each end.

We get practically the same results now, by measuring the level ends, going back toward the taper, and cutting off and discarding all level line, in excess of 18" and if the line has more than 10' of taper, we cut it off at the point where it measures .028. This permits the use of long leaders, with heavier butts than would several feet of level line of fine size.

We stock all lines and reels we recommend for our rods. When a complete fly fishing outfit is bought from us, Rod-Reel-Line (and back ing), we install, splice, cut ends if indicated, and loop the line ends, with a spliced loop, lubricate the reel, ready to fish with, at no extra charge. We recommend removing fly lines from the reels over idle season, and that they be hung in large coils in a cool dark place.

We are attempting here, to give you a visual introduction to the methods we think are best, and describe the rods and their attributes. There are so many temperaments and opinions, that we don't expect everyone to agree 100% but do believe we are close enough, in saying this or that rod will fit a certain set of conditions. This conviction is brought about by our many years of constant fly fishing, and an exchange of ideas with devoted rod users in many parts of the world. If we recommend an outfit which doesn't do the job intended, we will gladly exchange and make it satisfactory.

GUARANTEE

We don't guarantee any rod in any manner not to break or become "set." We do guarantee that there is no better material nor more careful workmanship, or more concern regarding design and testing, than we employ.

To us, a rod must embody an ideal; be as near perfect as is possible to make it.

You are invited to visit our shop, discuss your needs, or write us. If you place your confidence in us, we will never violate it.

SPINNING RODS

THE J. C. SALYER MODEL

6'4"-14-3 $\frac{1}{8}$ oz.

This model is probably the lightest practical spinning rod made. The butt and tip sections, without fittings, weigh only 1.87 oz., yet we saw it bring to net a number of trout in the five pound range. Mr. Salyer, Director of Wild Life Division in Washington, has a job which takes him to every State in the Union in conjunction with stream and wildlife improvements. He has undoubtedly fished as many of the best streams and lakes from coast to coast as anyone in the country. With this wealth of experience behind him he states that this is America's premium rod in the light spinning category. He says it is the perfect rod to take large crappie, bluegills, and trout on very light lures. It will cast $\frac{1}{8}$ - $\frac{3}{8}$ oz. lures unbelievable distances, with slight effort, and save good fish on the lightest of spinning lines.

THE BARNEY FISHER MODEL

6'4"-15-3 $\frac{1}{2}$ oz.

This is a new conception of snappy action and peak efficiency. It was first designed for a pack trip, where its 40" case is much appreciated. Its amazing casting power per weight permits sailing a $\frac{1}{4}$ to $\frac{1}{2}$ oz. lure great distances.

Mr. Fisher, of Dallas, Texas, says that a number of these rods that he has seen throughout the "Rockies" are giving commendable performances on all species and size of trout encountered.

Both of these rods have 10" grips.

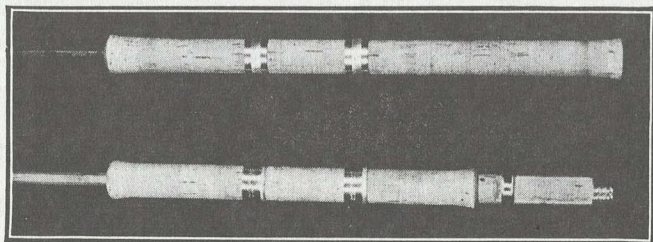
Being small, a reel such as the Alcedo Micron is much more proportionate than the larger reels, although any fresh water reel will fit.

Like our fly rods, our spinning rods are furnished with cloth bag and aluminum case. Both rods made in Spin-Master grade only. Price \$45.00.

SPINNING ROD GRIPS NOS. 11 and 12

No. 11—Standard 12" with 2 sliding bands.

No. 12—10 $\frac{1}{2}$ " with 2 sliding bands plus Screw Lock seat for fly reels. \$3.50 extra. With skeleton reel seat \$2.50 extra.



THE LIGHTWEIGHT

7'2"-13-3/4 oz.

The lightweight has a very delicate action and handles lures of 1/16-1/4 oz. extremely well. It is ideal for those who want to cast small unweighted spinners or live bait without sinkers.

A small crawdad or minnow can be dropped 60' away without a split shot. Its delicate action makes 2 or 3 lb. lines safe on good size fish although it definitely won't "horse" large fish through weeds.

Spinmaster grade—\$45.00.

THE STANDARD

7 1/2'-14-4 1/3 oz.

This rod was designed to handle efficiently the average range of true spinning lures from 1/8 oz. to 1/2 oz.

It will handle the lightest lures with a split shot or two and the full range of 3/8 oz. plugs and spoons safely but is most proficient on the 1/4 oz. lures.

Like the above rod it has full parabolic action and offers the most in casting and safe playing power for its weight. It will handle most fresh water game fish easily in open water and is the easiest to develop casting proficiency with.

Either rod can be fitted with a fly rod seat in addition to spinning bands as in fig. 12 (page 32) for \$3.50 extra. Thus equipped, this rod is a most efficient combination rod, handling small flies beautifully on an HDH line. Spinmaster grade—\$45.00.

An "All Purpose" Rod

Dear Mr. Young:

Three years ago I wrote you for a rod that would help me become a better fly caster. The specifications were—an "all purpose" rod 8', 4-4 3/4 oz. And that's exactly what I received. Today this rod weighs exactly 4 1/2 oz., with either tip. It hasn't been pampered. I've used it when ice clogged the guides, and on hottest days, rain or shine, using dry flies when appropriate—wet flies, nymphs, streamers and spinners. It answers all purposes for trout fishing—and does a good job for any kind of fishing. With the lightest Pflueger Medalist reel and HDH silk line that little rod is sure a hone.

My partner and I have compared it with several well known makes—same length and weight at much higher prices—and for action, workmanship, backbone, I'll take your rod anytime. Today I gave the rod practically a microscopic examination. No sign of set on butt or either tip. Windings still perfect. Ferules fit snugly. Varnish same as the day I received it, which speaks well for the varnish you use. B. W., Pennsylvania

My Favorite Rod

Dear Paul:

I gave your trout rod a good trial last weekend. It is now my very favorite, although my line was too light for its power. I am really amazed by what it can do in relation to its weight. One has to see it to believe it.

I am mailing you our book on Salmon Fishing in Spain. Although written in Spanish you will find the illustrations and river maps useful.

M. R. B., Madrid, Spain

Director—Tourist Department

(8 1/2'—17 modified parabolic)

Dear Sir:

Recently at the Prov. of Quebec casting championships, I entered the Distance Fly event with a borrowed rod that was made by your firm.

Was I surprised when I placed second with a cast of 117 ft. (It was my first venture in fly distance casting.)

My surprising fly casting enabled me to cop All-Round Champion honors.

Very truly yours,
Louis Simon
Verdum, Quebec, Canada

WEST'S PET

8'-15-4 $\frac{3}{4}$ oz.

This rod has been our biggest seller in the Southern States because of the ease with which it handles large bass. It has decided advantages in weedy ponds or confined waters where full freedom of play cannot be allowed. Quite a few owners use it for Northern Pike and have handled many over 20 lbs. with no damage or set to the rod.

This rod makes an excellent bugging rod with reel seat No. 12 (page 32), and an HCH line.

Handles lures of $\frac{3}{8}$ - $\frac{3}{4}$ oz. best.

Price—\$50.00 (with No. 12 grip—\$53.50.)

This model is also available as a suitcase rod in 4 equal sections and fitted in a 24" case, making it ideal for pack trips. Price—\$55.00.

7 $\frac{1}{2}$ ' LIGHT SALT WATER MODELS

Both of these models, while designed for surf fishing with heavier lines, are being used by fresh water anglers on steelhead and salmon, and in many instances for bass where rough going requires a stiffer rod

7 $\frac{1}{2}$ '-16 fer. 14" grip, 5 oz. for $\frac{3}{8}$ - $\frac{3}{4}$ oz. lures. Price \$52.50.

7 $\frac{1}{2}$ '-17 fer. 16" grip. 5 $\frac{1}{2}$ oz. for $\frac{1}{2}$ -1 oz. lures. Price \$55.00.

These light surf rods will handle any Bone, Jack, Red, Snook, Stripper, etc., but are not meant for fish in the heavy class as is the Tarpon Tackler on the following page.

Made All-American Bait Team

Dear Mr. Young:

I took the 8' 15 Spinning Rod to the sports show last night. I am particular about who casts the rod, but those who did thought it was fine. Experienced casters can tell there's a great amount of difference between your rod and the average rod on the market.

I demonstrated the rod at the Anglers Club, both as a fly rod and a spinning rod. I like your rods. Through Mr. West I have used your $\frac{3}{8}$ and $\frac{3}{8}$ tournament sticks for three years of hard work. I used your rods in the National Casting tournament at Jeffersonville, Indiana and last September I made the All-American bait team with them. I shoot a hard shot and set any rod, but they have stood the test and I wouldn't take anything for them because they have been a long way with me and are still doing fine. I think the "Texas Kid" is one of the finest rods I ever picked up.

G. A. F., Texas

Dear Mr. Young:

I am enclosing under separate cover with a copy of this letter, a fishing rod

made by you, delivered in 1947.

This has been the most enjoyable and finest fishing rod I have ever owned and though made for a tournament casting rod has given wonderful service in fishing and was broken in a boating accident.

I wonder if you could provide me with another tip of this same lightness and flexibility. When I ordered the rod I asked for the lightest possible action in a 6 foot 4" rod consistent with casting $\frac{3}{8}$ oz. and $\frac{1}{4}$ oz. lures and specifically for tournament casting for fear of the action being too heavy if the request was made for a fishing rod.

With very best wishes, I am

Very truly yours,

Harvey Chenault, M.D.

Still Straight

Paul H. Young:

I have a casting rod I made up from one of your pieces. It is the best piece of cane I have ever gotten hold of. I have been fishing fifty years and this has stood more abuse and punishment than any rod I ever used. It is still as straight as when it came from your shop.

G. T. A., Tennessee

TARPON TACKLER

This 9½' powerhouse properly equipped with a salt water reel filled with 12 or 14 lb. monofilament will land most any fish you would care to fight and is all the rod that can be cast for any period of time.

It has licked large tarpon with no strain, and frankly we do not know just how large a fish it will kill, having been successful on everything hooked so far. It is fitted with a 27/64th aluminum ferrule, S.L.R.S., foul proof guides, and comes in partitioned cloth bag and carrying case (described on page 53). Price \$75.00.

CASTING RODS

Two-piece ferruled in middle. Cloth bag and aluminum case.

6' or 6' 4" for ¼ oz. lure.

6' or 6' 4" for ⅜ oz. tournament accy.

6' or 6' 4" for ½ oz. lure (Texas Kid)

6' for ⅝ oz. accy. (Average bass plug rod)

Note—The "Texas Kid" is one of the country's leading rods for ⅝ accy., but user takes his own chances on overworking it.

Price of above rods—\$40.00

STEELHEAD—BONEFISH BAIT ROD

8½' with equal length joints, .425" butt and 20/64" ferrule. This rod is known as the "Oregon Egg" rod, and is used on winter steelhead, bonefish bait fishing, and other bait fishing.

They are also used with slip-cast reels for heavy plug casting, at which they offer great distances and playing power.

With a six pound test mono-filament line, this rod has landed very large pike, snook, many bonefish and steelhead.

The grip is designed so that two hands can be used in casting. The reel seat accommodates light surf reels, as well as ordinary casting reels.

The finished weight is 7¾ oz.

Price: One Grade only, the best, \$55.00.

REPAIRS

We are equipped to repair or supply missing parts for most fly and spinning rods but cannot quote prices until rod is seen. We can assure you of skillful workmanship, quality parts, and fast service. Please send rods in metal case.

COMPLETE REFINISHING

Your rod is carefully scraped down to the bare bamboo and new snake guides installed throughout, the cork handle is cleaned and any loose ferrules or reel seat re-set if needed.

3-piece or two-piece including extra tip \$12.00 to \$16.00.

New tip tops or butt guides extra, trim wraps 10c ea. extra.

3-PIECE REPLACEMENT TIPS

We will match any tip as closely as possible. \$6.50 to \$12.50 depending on rod.

For proper ferrule fit and line up it is best to send in the complete rod and male ferrule of broken tip if possible.

UNFINISHED ROD SECTIONS AND FITTINGS

TWO-PIECE FLY ROD SECTIONS

To make fly rods 1-4 inc. listed on page 4	\$11.00	ea. section
To make fly rods 5-13 (page 4)	\$12.00	ea. section
To make fly rods 14 and 15 (page 4)	\$13.00	ea. section

THREE-PIECE FLY ROD SECTIONS

To make any of the four models listed on page 30	\$ 9.00	ea. section
--	---------	-------------

TWO-PIECE SPINNING ROD SECTIONS

To make spinning rods 1-4 listed on page 4	\$10.00	ea. section
To make spinning rods 5-7 listed on page 4	\$11.00	ea. section
All of the above sticks are furnished cut to exact size and hand filed, the same as go into our custom rods. All glass blanks come ferruled.		

FIBER GLASS BLANKS

SILA-FLEX

No.	Type	Length	Blank Weight	Blank Price
1	2 piece lt. dry fly	7'8"	3 oz.	\$14.75
2	2 piece med. act. fly	8'6"	3½ oz.	\$16.00
3	2 piece lt. act. spin.	7'	2⅞ oz.	\$13.50
4	2 piece stiff act. spin.	8'	4½ oz.	\$17.50
5	2 piece salt water spin.	9'	5½ oz.	\$18.50
6	1 piece ⅜ oz. (T3) cast.	5½'	1¾ oz.	\$10.00
7	1 piece ⅜ oz. (T5) cast.	5½'	2 oz.	\$10.00

HARNELL

No.	Type	Length	Blank Weight	Blank Price
1	2 piece lt. dry fly	8'	3 oz.	\$16.70
2	2 piece bass bug	9'	4⅛ oz.	\$16.70
3	2 piece heavy fly	9½'	5½ oz.	\$17.95
4	2 piece lt. spin.	7½'	3 oz.	\$14.45

OPERATIONS WE ARE PREPARED TO DO, AND PRICES

1. Turning ferrule stations, to take our high grade 18% nickel silver serrated ferrules. Line to line (push) fit, each station, \$1.00; i.e. a 2 pc. rod and extra tip, \$3.00, and a 3 pc. rod with extra tip, \$4.00.
2. Setting ferrules, lining up rod, marking in guide spacings. Two piece rod \$2.50; three piece rod \$3.50. Ferrules not included.
3. Gluing and shaping Fly Rod grip and cork skeleton reel-seat, hooded cap and reel band installed, \$3.50.
4. Gluing and shaping Fly Rod grip and screw locking reel-seat, with sleeve, knurled screw and hooded cap installed, \$5.00.

FERRULES

Ferrules of 18% nickel silver, serrated, closed center, extra deep.		
10/64th, 11/64th, 12/64th, 13/64th, 14/64th		\$1.75 pair
Extra half (male)88c
15/64th, 16/64th	2.25 pair—	1.13 for half
17/64th, 18/64th		2.50 pair
19/64th		2.75 pair
20/64th		3.00 pair

FEATHERWEIGHT FERRULES

In "no-glare" black finish

A precision machined tapered ferrule for salt and fresh water rods.

Sizes 10/64 to 20/64 1.00 per pair

Sizes 21/64th through 32/64th \$1.45 per pair

EXTRA MALE 1/2 ABOVE PRICES

FERRULE CEMENT. Per stick 20c

PLIOBOND, Small Bottle 25c

Large Bottle 60c

METAL SCREW-LOCK REEL SEATS

For Fly Rods: Heat treated aluminum alloy. Double lock nut, anodized. Takes 5/8" wood filler.

Price: Each \$1.35

Wood filler, 3 1/2" x 5/8" with 21/64-3/8 or 7/16" hole.

Price: Each 20c

For Casting Rods: Heat treated aluminum, anodized.

Price: Small—\$1.35; Large—\$1.50.

CORK GRIPS AND REEL SEATS—Glued and Shaped

Fly rod grip—1-1/16" x 7" for heavy fly rods, 7/16" hole. Each ... \$1.25

Fly rod grip—1-1/16" x 6 1/2", 3/8" or 21/64" hole. Each 1.10

Hood cap and reel band—18% nickel silver, for cork
skeleton reel seats. Set 1.25

Hooded cap, aluminum sleeve and knurled screw lock nut for
screw locking reel seat. Set 2.25

Cork for skeleton reel seat, glued and shaped..... .50

Cork for screw lock reel seat, glued and shaped..... .50

Cork grip for casting rods, 5" x 1 1/16" with 3/8-7/16 or 1/2" hole.
Each 1.00

Cork forward grip, 1 1/2" x 1 1/16"—1/2", 7/16", 3/8" or 21/64"
hole. Each50

CORK RINGS FOR GRIPS AND REEL SEATS

1/2" thick by 1 1/8" diameter with 21/64" hole. Doz. 75c. Extras, ea. 7c	
1/2" thick by 1 1/8" diameter with 3/8" hole. Doz. 75c. Extras, ea. 7c	
1/2" thick by 1 1/8" diameter with 7/16" hole. Doz. 75c. Extras, ea. 7c	
1/2" thick by 1 1/8" diameter with 9/32" hole. Doz. 75c. Extras, ea. 7c	
1/2" thick by 7/8" diameter with 21/64" hole. Doz. 65c. Extras, ea. 6c	
1/2" thick by 7/8" diameter with 3/8" hole. Doz. 65c. Extras, ea. 6c	
1/2" thick by 7/8" diameter with 7/16" hole. Doz. 65c. Extras, ea. 6c	
(7/8" are for cork reel seats)	

SPINNING REEL BANDS

Annodized Aluminum, per pair	.50c
Own own, aluminum alloy, flared ends knurled, 15/16" opening.	
Per pair	\$1.00

GUIDES and TIP TOPS

Snake guides, "Perfection" hardened tungsten—3 to 4/0 doz.	.25
If assorted sizes, or less than even doz.—ea.	.03
Snake guides, "Perfection" Stainless steel—3 to 4/0 doz.	.45
If assorted sizes, or less than even doz.—ea.	.05
Snake guides, Chromium deposited—3 to 4/0 doz.	.75
If assorted sizes, or less than even doz.—ea.	.07
Butt guides, "Perfection" tungsten—5/32, 7/32, 1/4, 5/16—ea.	.65
Butt guides, "Perfection" Chromium—5/32, 7/32, 1/4, 5/16—ea.	.75
Fly tip tops, "Perfection" tungsten—4, 4 1/2, 5, 5 1/2, 6, 7, 8/64 ea.	.35
Fly tip tops, "Perfection" Chromium—4, 4 1/2, 5, 5 1/2, 6, 7, 8/64 ea.	.45
Casting guides and tip tops Chrome—above sizes—ea.	.35
Spinning tip guides, Chrome—7/32, 1/4, 5/16 ea.	.35
Spinning tip tops—7, 8, and 9/64"	.45
Spinning butt guide—3/4" ea.	.75

AETNA FOULPROOF GUIDES

1 3/4"	\$2.00
1 1/4"	1.35
7/8"	.95
3/4 and 5/8"	.85
1/2 and 3/8"	.80
5/16 and 1/4"	.75
5/32"	.60
Tip tops	.45

CARBOLOY GUIDES AND TOPS

3/4"	\$1.00
5/8"	.95
7/16"	.85
5/16 and 3/8"	.75
1/4"	.65
9/64 and 10/64th top	.75
7/64 and 8/64th top	.70
6/64 and 6 1/2/64 top	.65
5 1/2/64 top	.60

WINDING SILK

All standard colors—00 size. 50 Yards	20c
All standard colors—A size. 50 Yards	25c
Varigated colors—00 size. 50 Yards	25c

COLOR PRESERVATIVE

Per Bottle	35c
------------	-----

ROD VARNISH

This bakelite base varnish has been found most durable and best for fresh and salt water. It's easy to apply and is very tough and elastic. I have used it for years with perfect satisfaction.

Price: Jar	50c
------------	-----

We have experienced some difficulty lately in deciphering rod kit orders and below offer two sample orders to assist new customers in ordering. If you do not have access to a lathe, it is almost impossible to correctly turn ferrule stations, and quite difficult to shape the grip and reel seat by hand. If you have had no experience in setting ferrules and their proper alignment you should have this done by us as this is a critical point.

The first sample order has all work done except wrapping the guides and varnishing. The second sample order involves the work of turning stations, mounting ferrules, aligning gluing and shaping cork reel seat and grip, etc.; and is not advised unless you have had some previous experience. We will furnish the correct size corks, guides, etc.; when ordered with our sticks—otherwise please specify inside diameters of all corks.

SAMPLE ROD ORDERS

7½ ft. 3-1/3 oz. 2-piece rod and ex. tip.		
Each section	\$11.00	\$33.00
1 pair of ferrules 14/64, pair	1.75	1.75
Extra male88	.88
3 Stations turned, each	1.00	3.00
Set Ferrules, line up, mark guides, complete	2.50	2.50
Glue and shape grip and screw lock reel seat, complete	5.00	5.00
2 Tip Tops, each35	.70
1 Butt Guide65	.65
14 Snake Guides (assorted), each03	.42
1 Partitioned Cloth Bag	1.25	1.25
1 Aluminum Case	4.00	4.00
Total of order		\$53.15

8½' Texan, 2 tips and butt—each section	\$12.00	\$36.00
1 pair 15/64 nickel silver ferrules	2.25	2.25
extra male	1.13	1.13
13 corks for 6½" grip (75c per doz.)	ea. .07	.82
7 corks for skeleton reel seat	ea. .06	.42
Hood cap and band for skel. seat	1.25	1.25
2 tip tops chrome	ea. .45	.90
1 butt guide chrome75	.75
16 snake guides stainless steel	ea. .05	.80
1 spool 00 red silk20	.20
1 small bottle plibond25	.25
1 bottle color preservative35	.35
1 jar bakelite varnish50	.50
1 partitioned cloth bag	1.25	1.25
1 aluminum rod case	4.50	4.50
Total of order		\$51.37

COMPLETE BALANCED OUTFITS

In response to numerous customers' letters asking us to describe our conception of the ideal balance between rod and reel, line and leader, we offer the four outfits listed below as the most often inquired about. Our recommendations are based on many tests and experiments and take into consideration the normal amount of backing required for the type of fishing we recommend each rod for. For instance, if you intend to fish salmon with our MIDGE rod you would require a reel capable of holding considerable backing, such case not being a normal requirement, which our recommendations are based on.

THE DYNAMIC MIDGE OUTFIT

Consists of a MIDGE rod complete with partitioned cloth bag and sturdy aluminum case and fitted perfectly for a Hardy St. George Jr. reel. This baby reel is furnished with appropriate HEH line installed with both ends looped. Also included are six 6X platyl leaders (page 48) and a coil of 6X platyl tippit material. Rounding out this setup are 1 dozen mixed midges—half dry flies and half nymphs—in a small plastic fly box. This constitutes the ideal balanced setup and is ready to cast and enjoy with no further experimenting necessary. Price of above outfit complete \$110.00 postpaid, insured, and guaranteed to add whole chapters to your trout fishing memoirs.

THE DREAM OUTFIT

Includes a Parabolic 15 with one wet and one dry fly tip (2 wet or 2 dry tips optional, see page 20) complete with partitioned bag and case. A screw lock or skeleton reel seat also optional, please state which is desired. Also furnished is a Hardy Lightweight reel properly backed with 10 lb. nylon line and equipped with appropriate HDH line properly cut and looped at each end to be readily reversible. Completing this outfit are three 4X and three 6X platyl leaders and a coil of each size platyl tippit material. This setup will now cast beautifully and after its first tryouts will soon become your favorite "regular rod." Price complete as listed \$115.00 (with Medalist 1494 instead of Hardy reel \$105.00).

THE PEERLESS SALMON OUTFIT

This setup built around our BOBBY DOERR rod offers the epitome of a balanced salmon outfit; to quote a number of inveterate salmon fishermen "It's in a class by itself for anyone fishing both dry and wet." The "DOERR" is equipped with a 1495½ Medalist to which the proper amount of 15 lb. backing has been installed and spliced to the appropriate GBF line precut to proper size and looped at end. Also furnished are three 2X, three OX and three 7/5 platyl leaders of our make plus a coil of each size tippit material to round out the outfit at a price of \$110.00.

With this setup casts of 80 feet are easily attained *sitting down* in a canoe.

THE HEAVY DUTY OUTFIT

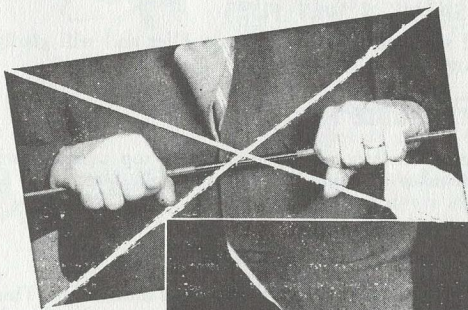
This last balanced outfit caters primarily to the salt water angler as it is built around our FLORIDA SPECIAL, although many want a rod of this strength to use for fresh water bass or salmon fishing also. This rod has tremendous power and constitutes the ideal bone fish rod with our recommended setup which includes a 1498 Medalist housing 650 feet of 15 lb. nylon backing spliced to a GAF line properly cut and looped. Also included are three OX and three 7/5 platyl leaders and their corresponding tippit coils. This outfit is now balanced for power to drive a long line into any wind short of a hurricane. Price \$120.00 or substituting a 1496½ reel, \$115.00.

Many fine rods are damaged by carelessness. If you expect the service from your rod that we have built into it,

Don't pull it apart around your tummy, as in fig. 1.

Don't pull it apart at arm length as in fig. 3. Either way may jab the ends into damage, or strain the structure.

Don't lay your rod on the ground.



Don't pick up a fish on a fly rod, no matter how small a fish.

1 Don't show someone how good a rod you have by making its ends meet.

Don't put your rod

away damp.

We suggest wiping a rod off with a lightly oiled rag before putting in case. You may wash any of our rod grips with soap, energine, gasoline or alcohol. They are built up with water proof glue.

Don't stand it up in a corner with a bend in the tip.

Don't lay it out in the sun on a car top.

Don't lay it along nails, on docks or porches unless the nails are in a straight line, and are covered.

Fig 2 shows correct hold. Grasp tightly both parts of ferrule. Tense arms — and pull with shoulder muscles and left knee, in straight line. Don't Twist.

