

CROSS
SPLIT BAMBOO
RODS



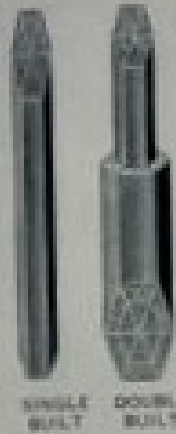
*Hand Fashioned
Double and
Single Built*



The FINEST EXAMPLE OF THE ROD MAKERS ART.

CROSS SPLIT BAMBOO RODS

DOUBLE BUILT - SINGLE BUILT

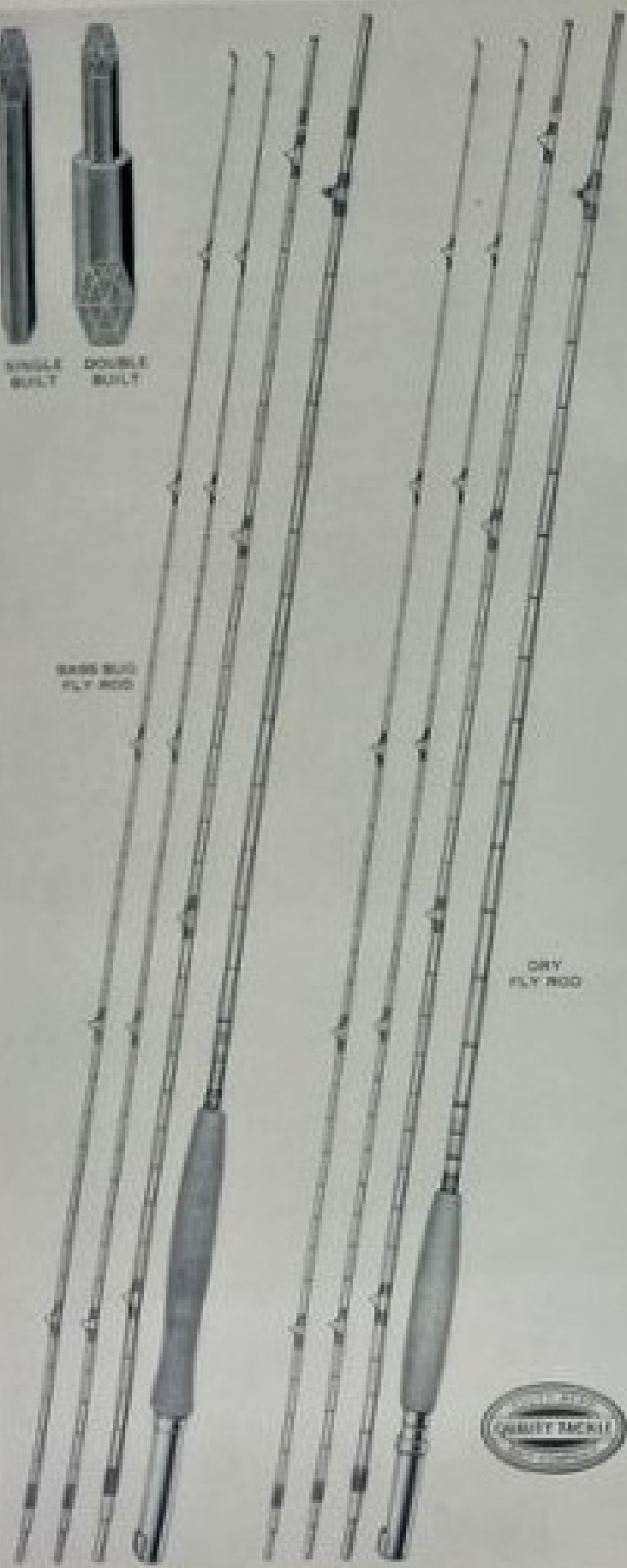


SINGLE BUILT

DOUBLE BUILT

WASSERFLUG
FLY ROD

DRY
FLY ROD



CROSS SPLIT BAMBOO RODS

DOUBLE BUILT - SINGLE BUILT

Cross Fly Rods

A dependable rod is the most important part of an angler's outfit. Cross Fly Rods are known among expert anglers for their lightness, strength, casting and durability. They have earned an enviable reputation. Cross Rods are designed for the angler who demands the maximum efficiency of a fly rod.

All models are in three joints and extra tip (except the Sylph). Each rod packed in partitioned bag and floating aluminum case, except No. 190 Salmon Rod. Either genuine agate or hardened steel stripping guide can be had. The genuine agate stripping guide is the most popular and will be furnished unless the hardened steel stripping guide is requested. Hardened steel snake guides and tungsten tip top are standard equipment.

Any of the fly rod grips shown on page 28 will be furnished. When specifying the No. D grip, please have in mind that the weight of the rod will be slightly increased. In rush orders we can ship more promptly if customers do not specify grip.

Our expert's line recommendations are attached to each Cross Fly Rod.

Cross Dry Fly Rods

Dry Fly fishing continues its increasing popularity. To enjoy this sport to the fullest extent it is necessary that your rod be powerful, accurate, smooth, of even action and have the ability to handle a heavy line.

Cross Dry Fly Rods ideally meet these requirements. They withstand the lunges of large fish, heavy waters and strong winds with either dry or wet flies. They are used extensively with perfect satisfaction on the Mississippi and St. Lawrence Rivers with cork body lures, and on the Nipigon with shiners and other live bait.

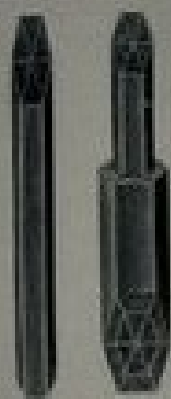
Cross Rods are built with the correct stiffness and just the right degree of snap, strength and weight. They have ample power in the middle and tip joint to pick up a long line and to cast it accurately. The 9- and 9½-ft. lengths are used in tournament work although not listed as tournament rods or guaranteed to be tournament weight. Weights listed are approximately accurate.

Cross Doublebuilt			Cross Singlebuilt		
Model 164			Model 1640		
8 ft.	4½ oz.	\$50.00	8 ft.	4½ oz.	\$40.00
8½ ft.	4½ oz.	50.00	8½ ft.	4½ oz.	40.00
9 ft.	5½ oz.	50.00	9 ft.	5½ oz.	40.00
9½ ft.	6 oz.	50.00	9½ ft.	6 oz.	40.00
10 ft.	6½ oz.	50.00	10 ft.	6½ oz.	40.00
10½ ft.	7 oz.	50.00	10½ ft.	7 oz.	40.00

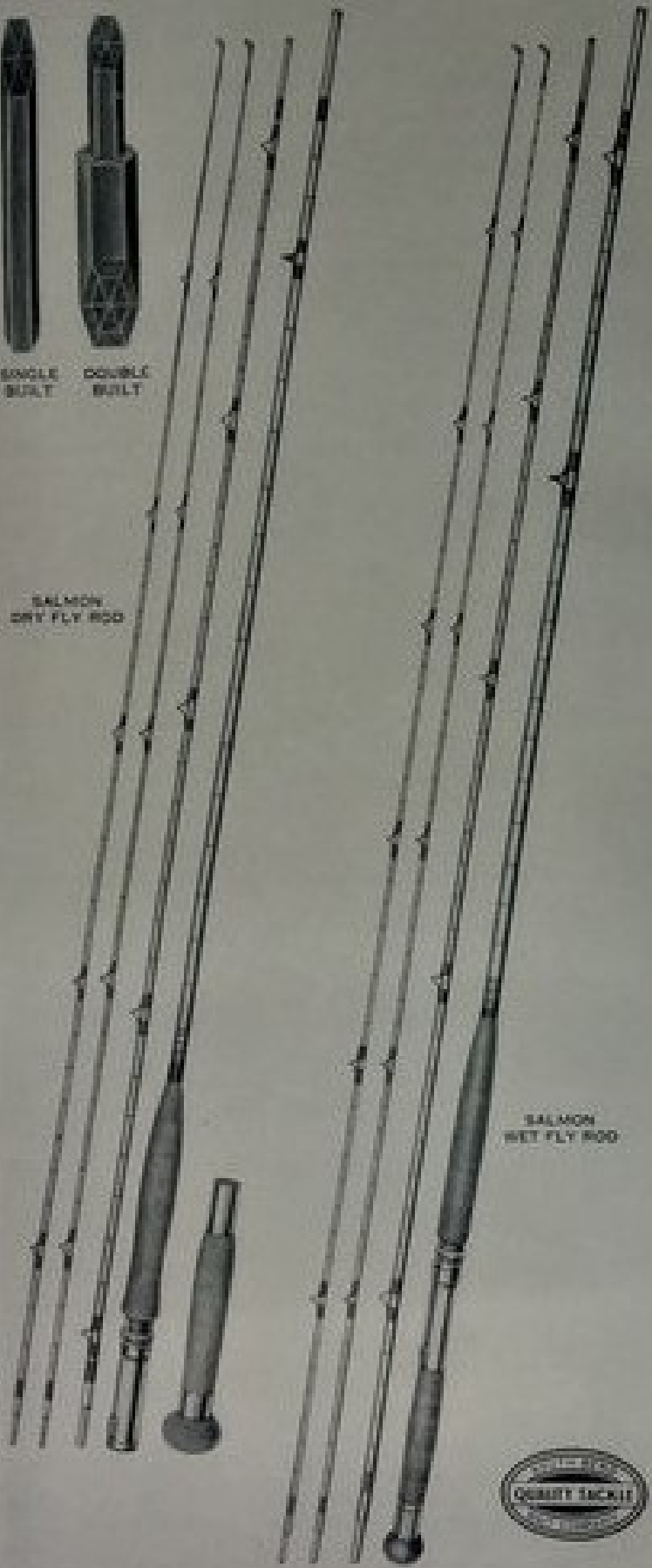
E. C. Kemper, of Washington, D. C., mentions his experience with Cross Rods: "I have a Singlebuilt Cross Rod, light weight, which has given me wonderful service on the upper Potomac where we get small-mouth Last summer, I fished with a guide on Maine, using a Doublebuilt Cross Fly Rod, and the punishment it took, without showing a strain, was nothing short of marvelous."

CROSS SPLIT BAMBOO RODS

DOUBLE BUILT - SINGLE BUILT



SINGLE BUILT DOUBLE BUILT



SALMON DRY FLY ROD

SALMON WET FLY ROD



CROSS SPLIT BAMBOO RODS

DOUBLE BUILT - SINGLE BUILT

Cross Dry or Wet Fly Rods

A revelation to the angler who desires a rod with strength and power, of medium stiff action, yet perfectly balanced for either Dry or Wet Fly fishing.

They are highly accurate in casting, flexible and lively, and sensitive to every movement of the fish. Yet they possess the strength necessary to meet the unexpected, unusual situations. Weights listed are approximately accurate.

Cross Doublebuilt

Model 166

7 $\frac{1}{2}$ ft.	1 oz.	\$50.00
8 ft.	4 $\frac{1}{2}$ oz.	50.00
8 $\frac{1}{2}$ ft.	4 $\frac{1}{2}$ oz.	50.00
9 ft.	1 $\frac{1}{2}$ oz.	50.00
9 $\frac{1}{2}$ ft.	1 $\frac{1}{2}$ oz.	50.00

*Cork reel seat.

Model 167

9 ft.	4 $\frac{1}{2}$ oz.	\$50.00
-------	---------------------	---------

*Whipper action.

Cross Singlebuilt

Model 1660

7 $\frac{1}{2}$ ft.	1 oz.	\$40.00
8 ft.	4 $\frac{1}{2}$ oz.	40.00
8 $\frac{1}{2}$ ft.	4 $\frac{1}{2}$ oz.	40.00
9 ft.	1 $\frac{1}{2}$ oz.	40.00
9 $\frac{1}{2}$ ft.	1 $\frac{1}{2}$ oz.	40.00

*Cork reel seat.

Model 1670

9 ft.	4 $\frac{1}{2}$ oz.	\$40.00
-------	---------------------	---------

*Whipper action.

Cross Salmon Wet Fly Rods

An extremely powerful rod especially designed to easily handle the long, heavy lines of the salmon angler. The calibrations are carefully calculated so that there is no disagreeable "double kick" in casting. A rod of correct flexibility combined with maximum power.

Built with 9-inch forward grasp and 6 $\frac{1}{2}$ -inch lower grip of solid ringed cork. The ferrules are extra strong to withstand the strain of long casts with heavy line. Screw type butt cap to take round rubber butt cushion. Positive Thread-Lock reel seat adds an important feature not found in other rods of this kind. Packed in a partitioned cloth bag, with aluminum tip case. Weights listed are approximately accurate.

Cross Doublebuilt

Model 190

11 ft.	26 oz.	\$75.00
14 ft.	24 oz.	70.00
15 ft.	19 oz.	65.00

Cross Singlebuilt

Model 1900

11 ft.	26 oz.	\$65.00
14 ft.	24 oz.	60.00
15 ft.	19 oz.	55.00

*Friend of his Cross Rod and
corky, Peter J. Schwan
has just landed a 7-lb.
steelhead.*



Page 310

CROSS SPLIT BAMBOO RODS

DOUBLE BUILT - SINGLE BUILT

Cross Salmon Dry Fly Rods

During the past five years, taking salmon with a dry fly has increased in popularity. It is admitted to be one of the outstanding sports—plenty of thrill and action to the angler.

Much skill can be acquired in this art and it is highly essential to use a particularly stiff model of dry fly rod. Length from 9½ to 10½ feet, with detachable grip below the hand to give additional leverage and correct reel position while playing the fish. The screw type butt cap takes round rubber butt cushion. This rod is equipped with the Positive Thread-Lock Reel Seat which securely holds the reel. This is an important feature not found in other Salmon Rods.

Our models, built in collaboration with experts in this style of angling, are found on Canadian salmon streams and are accepted as the finest rods possible to build. They have power and the ability to handle a long line. The weights and lengths given are exclusive of the detachable lower grip. A plug is furnished which can be inserted in the place of the lower grip, converting the rod into a typical "single-handed" dry fly rod. Weights listed are approximately accurate.

Cross Doublebuilt

Model 192

9½ ft.	8 oz.	\$60.00
10 ft.	8½ oz.	60.00
10½ ft.	9½ oz.	60.00

Cross Singlebuilt

Model 192B

9½ ft.	8 oz.	\$50.00
10 ft.	8½ oz.	50.00
10½ ft.	9½ oz.	50.00

Cross Bass Bug Fly Rods

An extremely powerful rod designed to easily handle bass bugs, spinner flies and other artificial lures. Stiffer than the Dry Fly models, snappier in action, they permit unusual accuracy.



On the Restigouche River, N. B., Canada, excellent salmon fishing attracts anglers from all parts of the world.

CROSS SPLIT BAMBOO RODS

DOUBLE BUILT - SINGLE BUILT

Greatest care is taken in selecting stock for these rods. The diameter of all sections, as well as the ferrules, is one sixty-fourth inch larger than the diameter of the Dry Fly Rods. This allows for necessary strength without adding any appreciable weight. Many anglers have found these rods ideal for steelhead and grilse. Weights listed are approximately accurate.

Cross Doublebuilt			Cross Singlebuilt		
Model 135			Model 135B		
8 ft.	5½ oz.	\$30.00	8 ft.	5½ oz.	\$40.00
8½ ft.	5½ oz.	\$0.00	8½ ft.	5½ oz.	\$0.00
9 ft.	6¼ oz.	\$0.00	9 ft.	6¼ oz.	\$0.00
9½ ft.	6¼ oz.	\$0.00	9½ ft.	6¼ oz.	\$0.00
10 ft.	7 oz.	\$0.00	10 ft.	7 oz.	\$0.00

Cross Distance and Accuracy Tournament Fly Rods

For years Cross Tournament Fly Rods have been used with splendid success in important tournaments throughout the country. Experienced tournament fly casters appreciate the combination of features found in these rods. Singlebuilt, 9 to 9½ feet in length, weighing 5¼ ounces, will also be supplied in 9 feet to weigh 4¾ ounces. Very stiff and powerful construction, designed to easily pick up and lay accurately the heaviest of tournament fly lines.

The grip is of tournament design with an especially designed reel seat of light-weight construction which allows greater weight in the middle joint of rod. Extra large tungsten guides, permitting the maximum distance when "shooting" the line. Tip top of tungsten. Stripping guide of hand-polished agate.

The Accuracy Fly Rod differs from the Distance Fly Rod in that the middle section is somewhat less stiff.

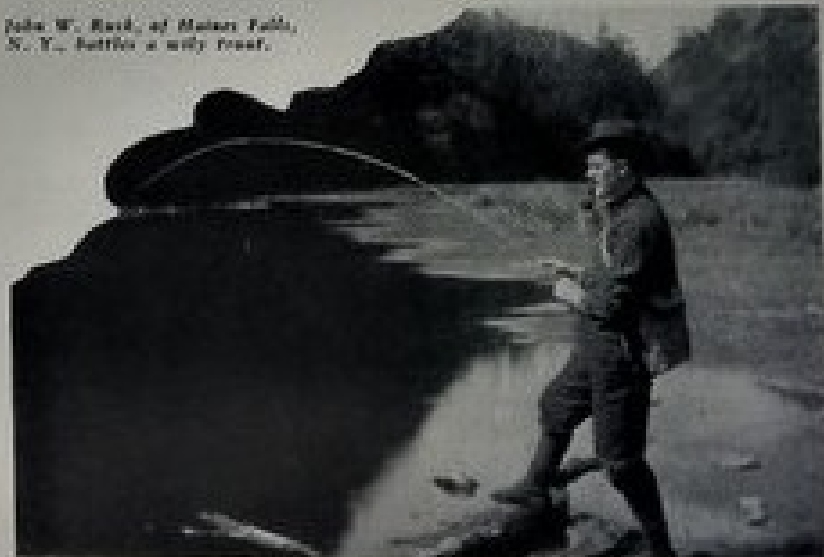
Cross Distance Tournament Fly Rods

Model 1700—9½ feet	5¼-ounce class	\$50.00
—9 feet	5¼-ounce class	\$0.00
Model 1350—9 feet	4¾-ounce class	\$0.00

Cross Accuracy Tournament Fly Rods

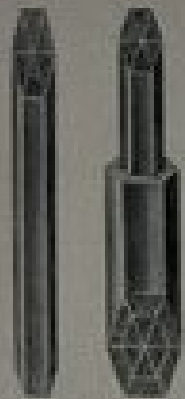
Model 1600—9½ feet	5¼-ounce class	\$50.00
--------------------	----------------	---------

John W. Reed, of Malheur Falls, N. Y., battles a wily trout.



CROSS SPLIT BAMBOO RODS

DOUBLE BUILT - SINGLE BUILT



SINGLE BUILT

DOUBLE BUILT

TOURNAMENT FLY ROD

STLPH FLY ROD



CROSS SPLIT BAMBOO RODS

DOUBLE BUILT - SINGLE BUILT

Cross Singlebuilt Sylph Fly Rod

The lightest, sportiest fly rod in the Cross line of rods. Its feather-weight construction, great strength, and 2½-ounce weight, challenge the angler to the supreme test of skill. Seven feet in length, its tapers are carefully calculated to insure ample strength to withstand unexpected strain placed upon it by a 10-pound trout. Mr. W. R. Forsythe, one of the founders of the Cross Company, was successful in landing a 13¼-pound salmon with this rod. It was his favorite rod for a number of years. Ozark Ripley, the well known author and angling authority, calls it one of the finest light rods he has ever used and tells us it will handle an HGH line with perfect satisfaction. Veteran anglers seeking to test their skill have found the Sylph Rod a most welcome addition to their equipment. One angler has gone so far as to declare it to be the "sportiest rod ever built." Rod building authorities know its construction is more accurate to the thousandth-of-an-inch than many delicate instruments. The Sylph is of two-piece construction with extra tip and is supplied with cork reel seat of special design. Packed in partitioned cloth bag and aluminum case.

Model 1300—7 feet. Approximate weight, 2½ ounces. \$35.00

Cross Singlebuilt One-Piece Fly Rod

Here is a fly rod offered, as far as we know, by no other American manufacturer. With no necessity for fitting standard ferrules at certain points of the rod, the designer is able to lay out sticks which are considered ideal in action. No ferrules to stiffen the action. The angler who need not consider carrying difficulties will cherish it above every rod in his collection and take great pride in showing such a rare rod to his friends. Usually supplied in dry fly action. In any length to 9 feet. Put up only in khaki bag.

Model 1400—9 feet. Approximate weight, 4½ ounces. \$45.00

It takes a steady and to withstand the leaps and rushes of a New Brunswick Atlantic Salmon.



Page Thirteen



**THERE'S A CROSS ROD
FOR EVERY KIND OF FISHING**